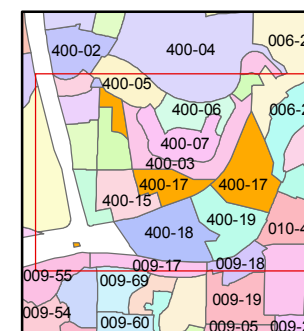
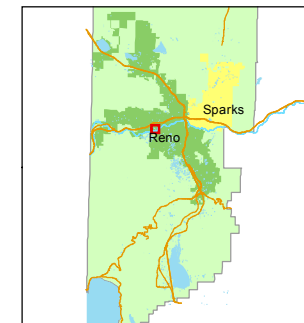


1 inch = 300 feet



created by: DSR 3/17/2011

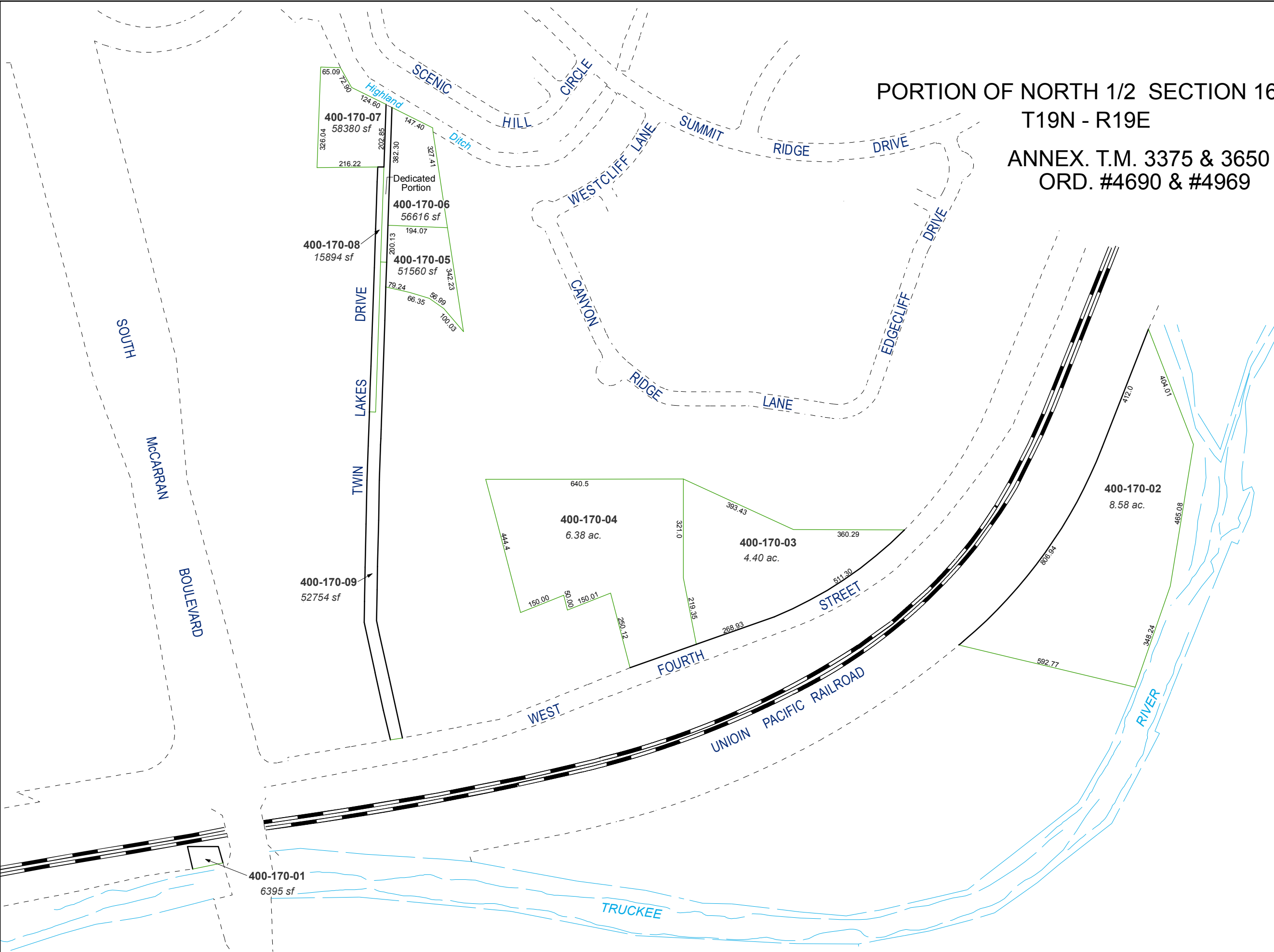
last updated: CFB 10/08/2012

area previously shown on map(s)

NOTE: This map was prepared for the use of the Washoe County Assessor for assessment and illustrative purposes only. It does not represent a survey of the premises. No liability is assumed as to the sufficiency or accuracy of the data delineated hereon.

PORTION OF NORTH 1/2 SECTION 16
T19N - R19E

ANNEX. T.M. 3375 & 3650
ORD. #4690 & #4969



400-170-07
58380 sf
400-170-06
56616 sf
Dedicated Portion
400-170-05
51560 sf
400-170-08
15894 sf

400-170-04
6.38 ac.
400-170-03
4.40 ac.
400-170-02
8.58 ac.

400-170-01
6395 sf

400-170-09
52754 sf

400-170-02
8.58 ac.