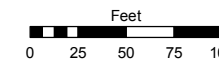
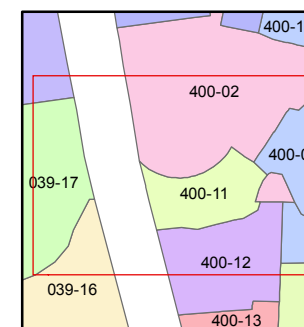
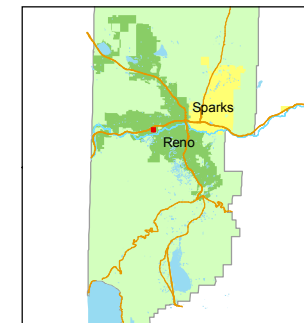


STATE OF NEVADA
WASHOE COUNTY
ASSESSOR'S OFFICE
Joshua G. Wilson, Assessor

1001 East Ninth Street
Building D
Reno, Nevada 89512
(775) 328-2231



1 inch = 100 feet



created by: DSR 3/08/2011

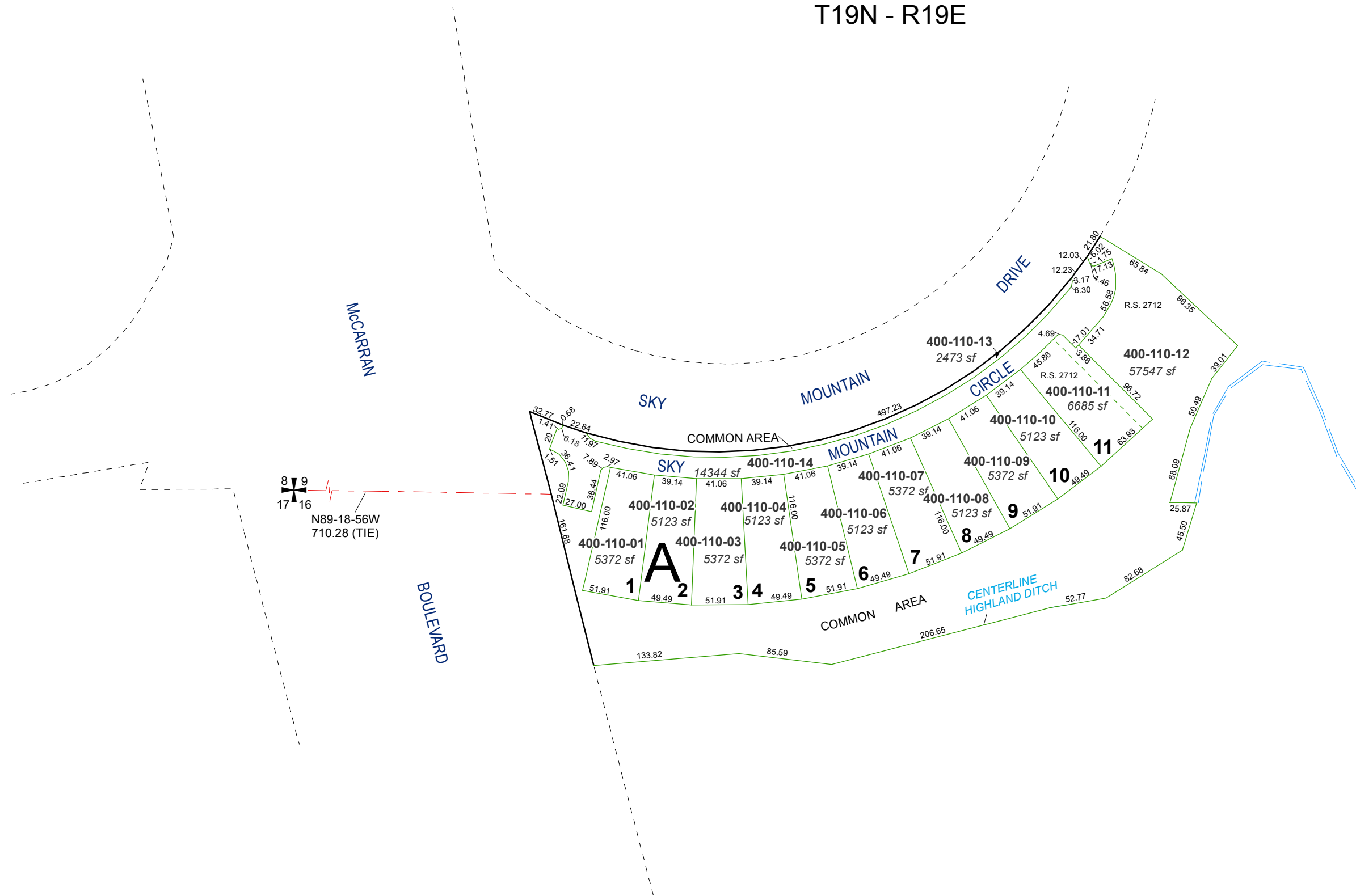
last updated: _____

area previously shown on map(s)

05-30

NOTE: This map was prepared for the use of the Washoe County Assessor for assessment and illustrative purposes only. It does not represent a survey of the premises. No liability is assumed as to the sufficiency or accuracy of the data delineated hereon.

(#2961)
SKY MOUNTAIN ESTATES
PORTION SW 1/4 SECTION 9 & NW 1/4 SECTION 16
T19N - R19E



8 9
17 16
N89-18-56W
710.28 (TIE)