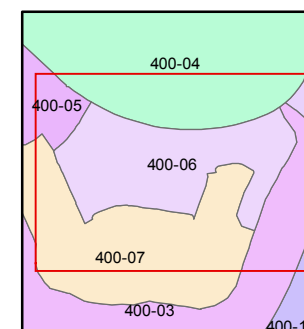
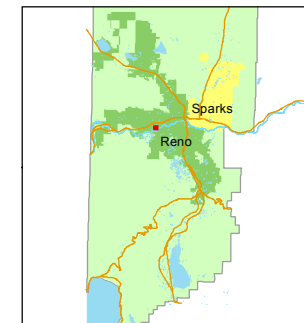


1 inch = 100 feet



created by: DSR 3/28/2011

last updated: EMG 9/29/14

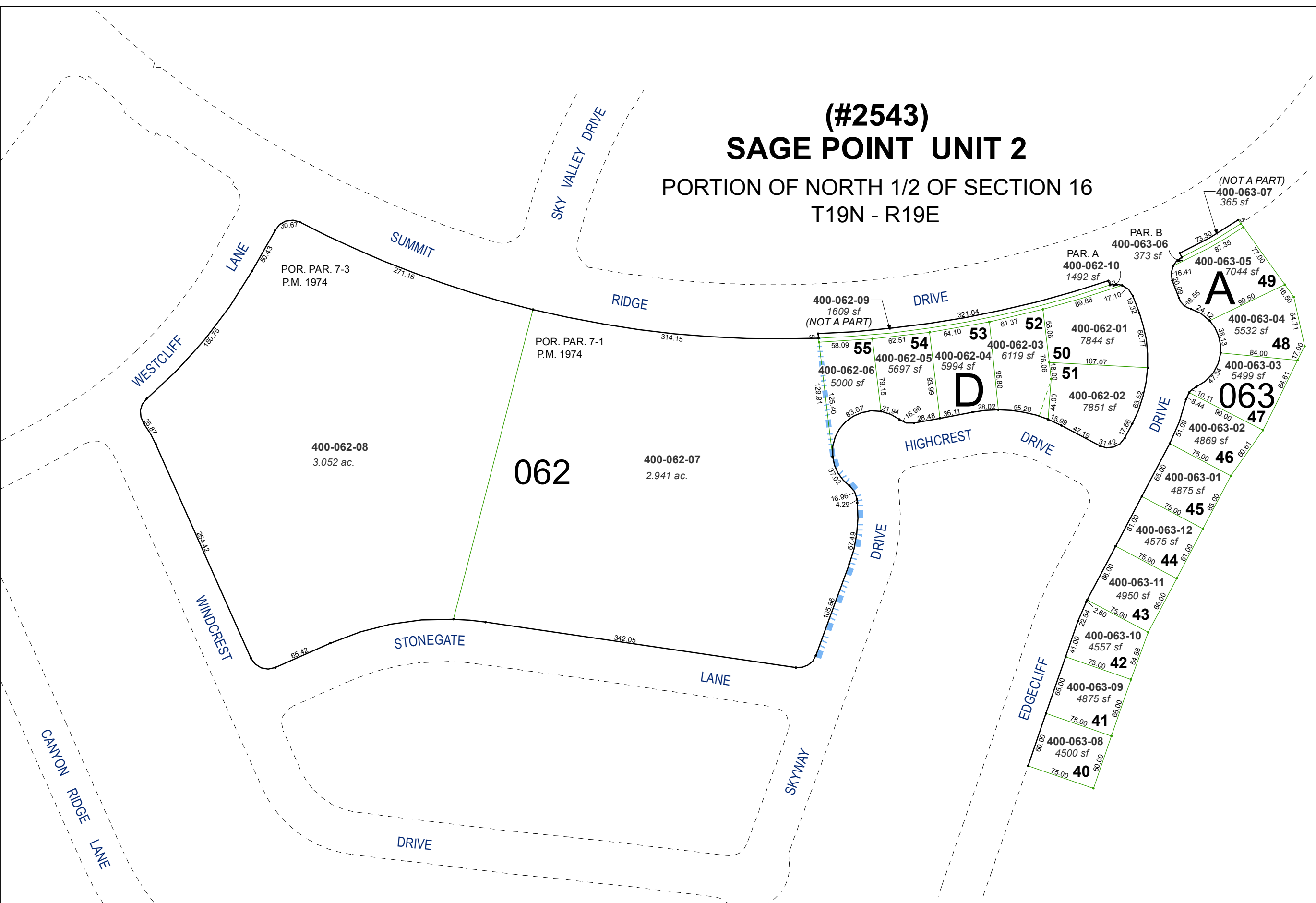
area previously shown on map(s)

005-31 400-17

NOTE: This map was prepared for the use of the Washoe County Assessor for assessment and illustrative purposes only. It does not represent a survey of the premises. No liability is assumed as to the sufficiency or accuracy of the data delineated hereon.

# (#2543) SAGE POINT UNIT 2

## PORTION OF NORTH 1/2 OF SECTION 16 T19N - R19E



POR. PAR. 7-3  
P.M. 1974

POR. PAR. 7-1  
P.M. 1974

400-062-08  
3.052 ac.

062

400-062-07  
2.941 ac.

PAR. A  
400-062-10  
1492 sf

PAR. B  
400-063-06  
373 sf

(NOT A PART)  
400-063-07  
365 sf

400-062-09  
1609 sf  
(NOT A PART)

D

A

063