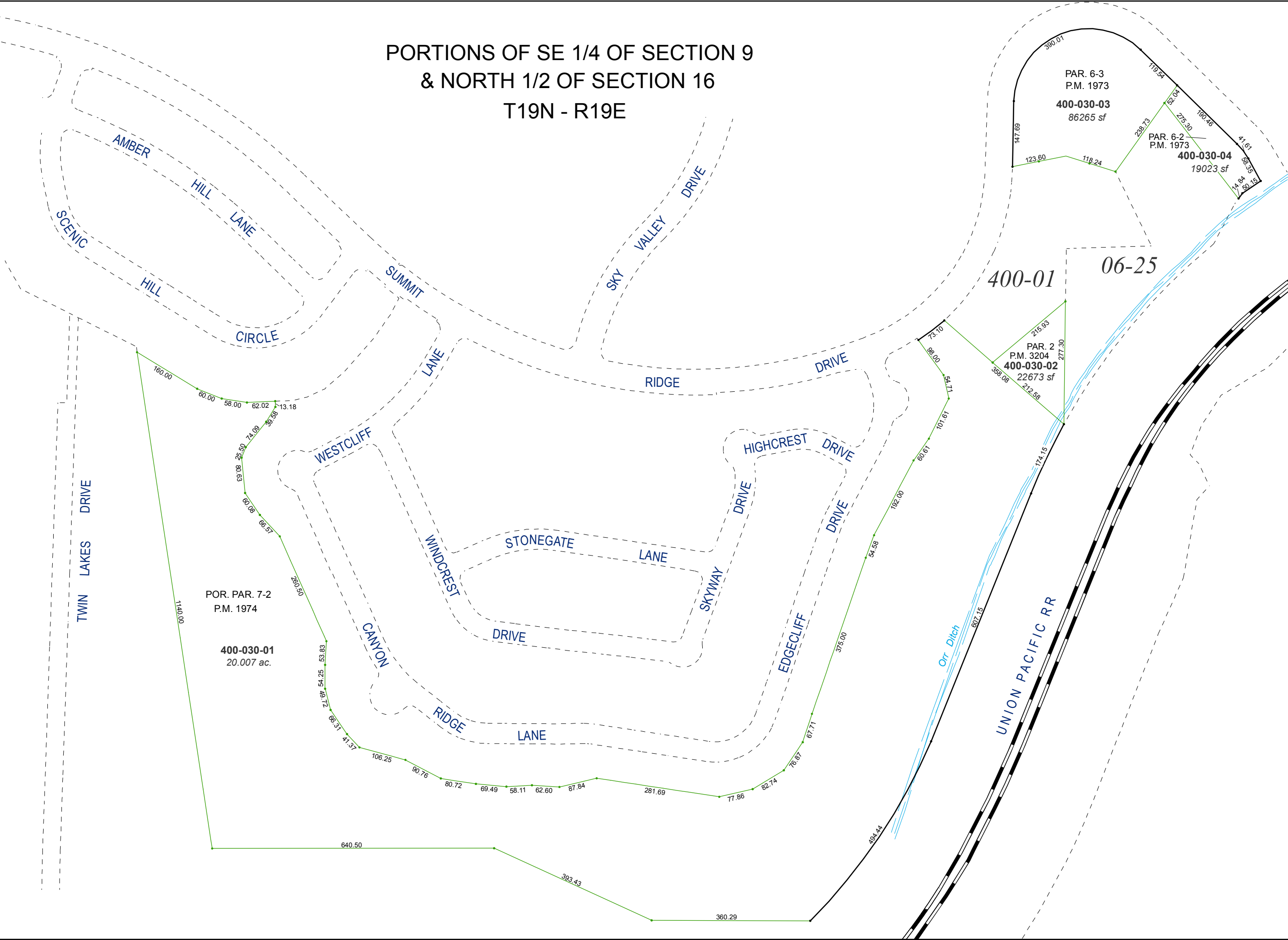


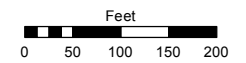
PORTIONS OF SE 1/4 OF SECTION 9  
& NORTH 1/2 OF SECTION 16  
T19N - R19E



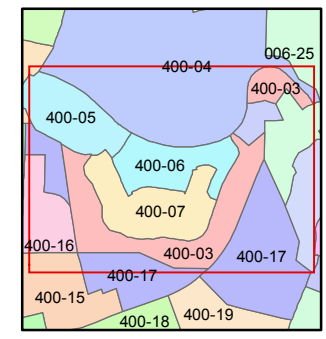
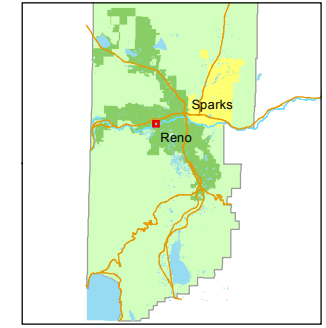
Assessor's Map Number  
**400-03**

STATE OF NEVADA  
**WASHOE COUNTY**  
ASSESSOR'S OFFICE  
Joshua G. Wilson, Assessor

1001 East Ninth Street  
Building D  
Reno, Nevada 89512  
(775) 328-2231



1 inch = 200 feet



created by: DSR 1/31/2011

last updated: EMG 9/29/14

area previously shown on map(s)  
005-18

NOTE: This map was prepared for the use of the Washoe County Assessor for assessment and illustrative purposes only. It does not represent a survey of the premises. No liability is assumed as to the sufficiency or accuracy of the data delineated hereon.