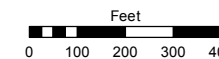
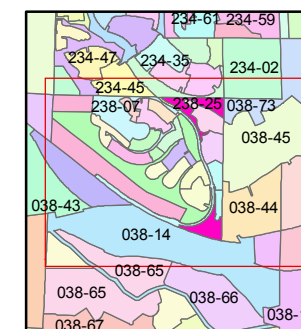
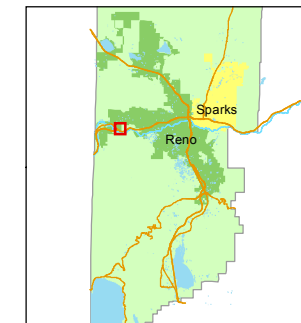


STATE OF NEVADA
WASHOE COUNTY
ASSESSOR'S OFFICE
Michael E. Clark, Assessor

1001 East Ninth Street
Building D
Reno, Nevada 89512
(775) 328-2231



1 inch = 400 feet



created by: KSB 12/11/2014

last updated: JMO 9/07/16 JMO 10/20/16

area previously shown on map(s)

238-07

NOTE: This map was prepared for the use of the Washoe County Assessor for assessment and illustrative purposes only. It does not represent a survey of the premises. No liability is assumed as to the sufficiency or accuracy of the data delineated hereon.

(#5106)
SIERRA CANYON
VILLAGE 15
A PLANNED UNIT DEVELOPMENT
PORTION OF SECTION 15
T19N - R18E

(#5136)
SIERRA CANYON
VILLAGE 15B
A PLANNED UNIT DEVELOPMENT

