

9 10  
16 15

N 02-36-18 E  
380.00

# (#5088) SIERRA CANYON VILLAGE 13 A PLANNED UNIT DEVELOPMENT

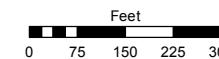
## A PORTION OF SECTION 15 T19N - R18E

Assessor's Map Number

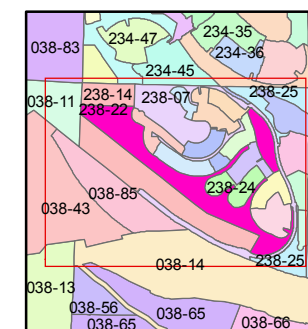
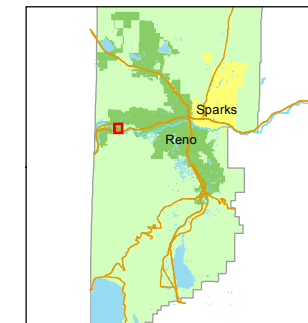
### 238-22

STATE OF NEVADA  
**WASHOE COUNTY**  
ASSESSOR'S OFFICE  
Michael E. Clark, Assessor

1001 East Ninth Street  
Building D  
Reno, Nevada 89512  
(775) 328-2231



1 inch = 300 feet



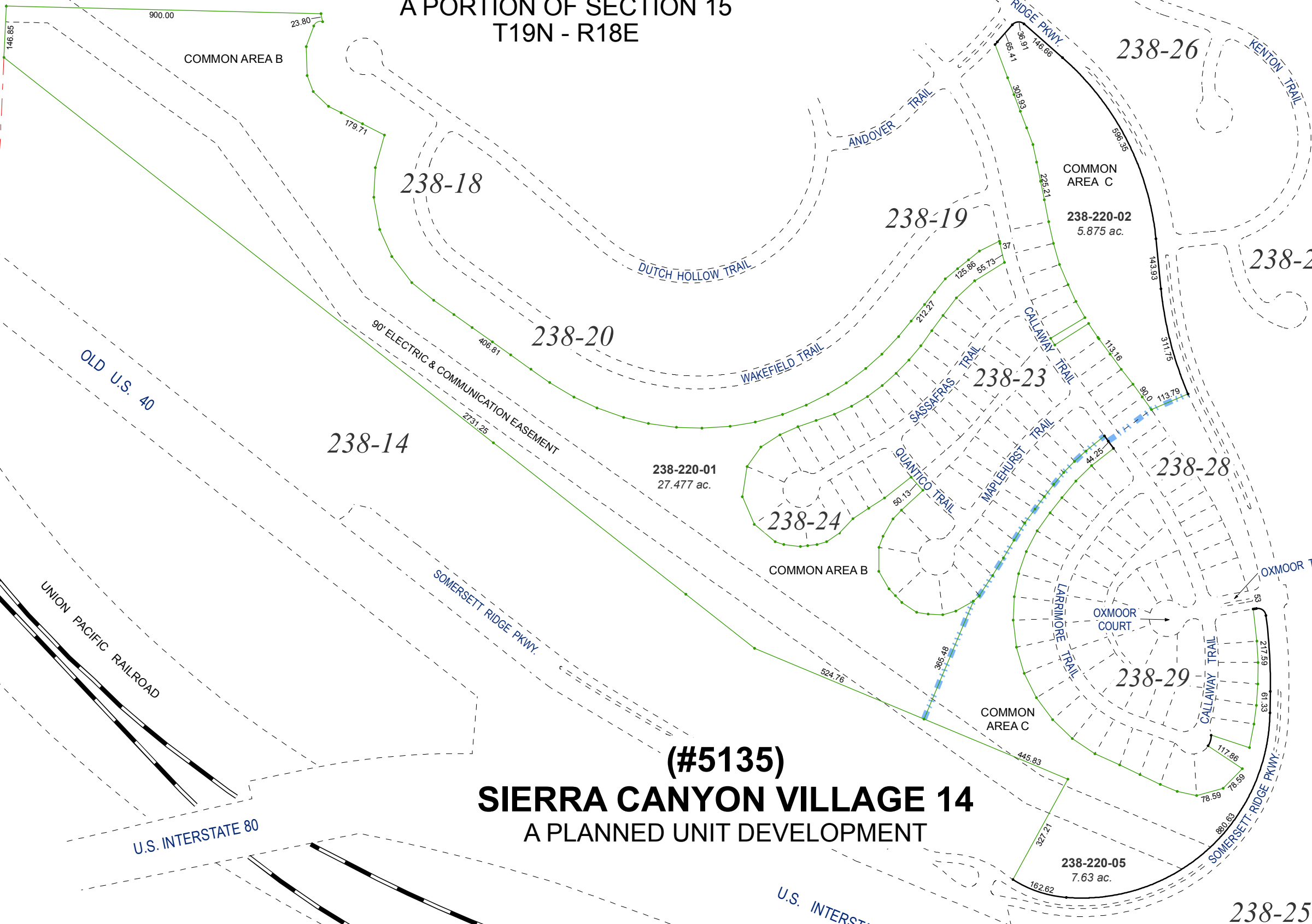
created by: KSB 9/04/2014

last updated: JMO 9/07/16 JMO 10/20/16

area previously shown on map(s)

238-07

NOTE: This map was prepared for the use of the Washoe County Assessor for assessment and illustrative purposes only. It does not represent a survey of the premises. No liability is assumed as to the sufficiency or accuracy of the data delineated herein.



# (#5135) SIERRA CANYON VILLAGE 14 A PLANNED UNIT DEVELOPMENT