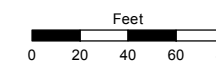
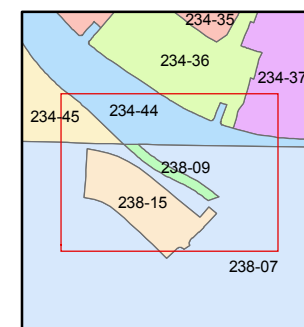
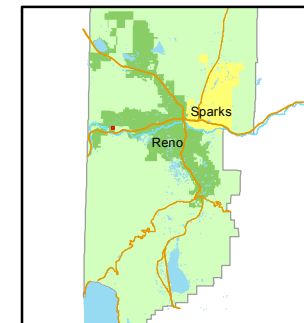


STATE OF NEVADA
WASHOE COUNTY
ASSESSOR'S OFFICE
Joshua G. Wilson, Assessor

1001 East Ninth Street
Building D
Reno, Nevada 89512
(775) 328-2231



1 inch = 80 feet



created by: NLH 06/27/2012

last updated: NLH 7/5/12

area previously shown on map(s)

038-38

NOTE: This map was prepared for the use of the Washoe County Assessor for assessment and illustrative purposes only. It does not represent a survey of the premises. No liability is assumed as to the sufficiency or accuracy of the data delineated herein.

(#4806)
SIERRA CANYON VILLAGE 11 & 12
A PLANNED UNIT DEVELOPMENT
A PORTION OF SECTION 15
T19N - R18E

