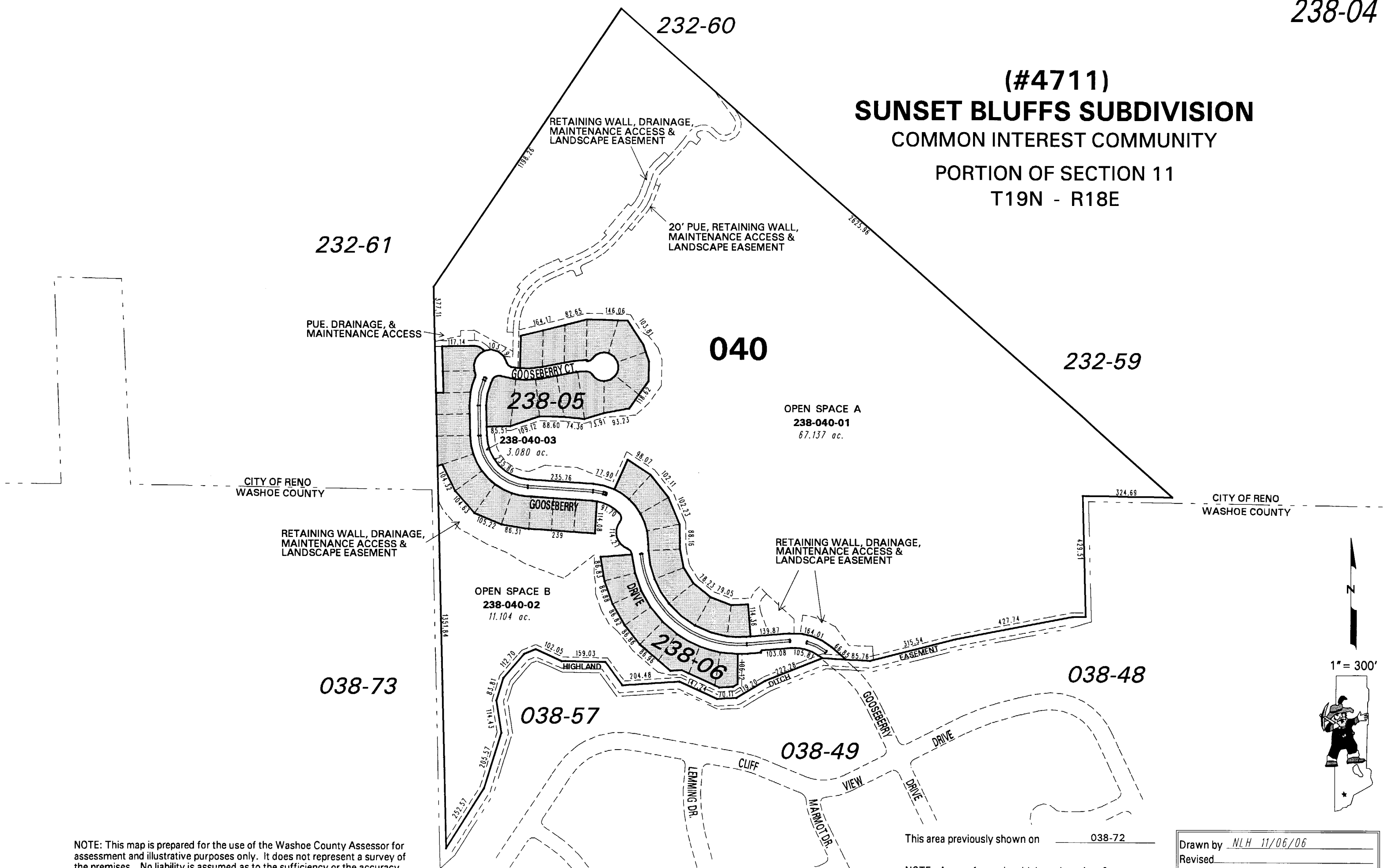


(#4711)
SUNSET BLUFFS SUBDIVISION
COMMON INTEREST COMMUNITY

PORTION OF SECTION 11
T19N - R18E



040

OPEN SPACE A
238-040-01
67.137 ac.

OPEN SPACE B
238-040-02
11.104 ac.

238-05

238-040-03
3.080 ac.

238-06

232-61

038-73

232-59

038-48

This area previously shown on 038-72

NOTE: This map is prepared for the use of the Washoe County Assessor for assessment and illustrative purposes only. It does not represent a survey of the premises. No liability is assumed as to the sufficiency or the accuracy of the data delineated hereon.

Office of Washoe County Assessor, Nevada - Robert W. McGowan

NOTE: Areas of parcels which are less than 2 acres are shown in square feet.

Drawn by NLH 11/06/06
Revised _____
ARC INFO 9.0 WINDOWS 2000 5.0

