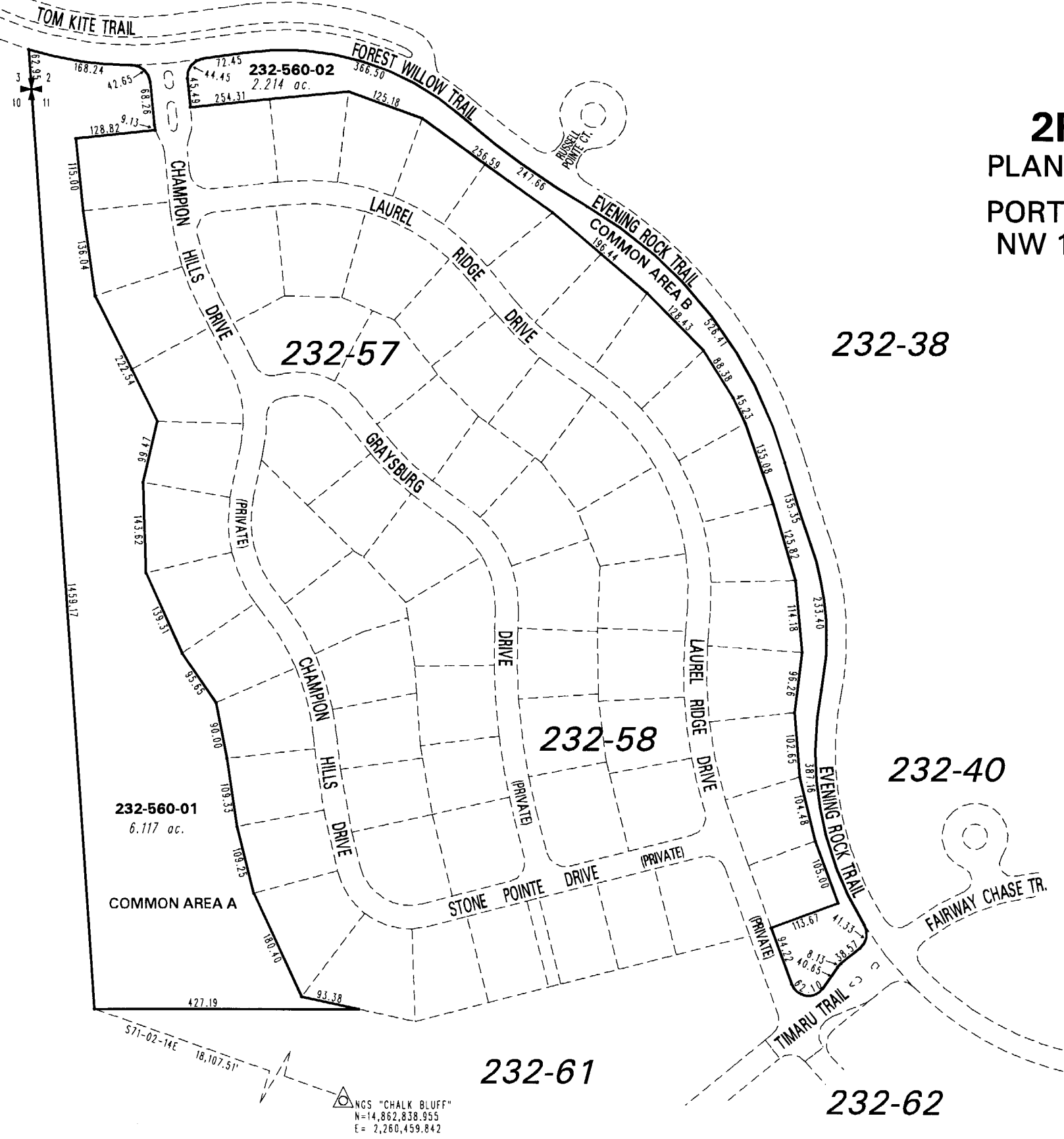


(#4400)

**2F @ SOMERSETT**  
PLANNED UNIT DEVELOPMENT  
PORTIONS OF SW 1/4 SEC. 2 &  
NW 1/4 SEC. 11, T19N - R18E

BOOK 234

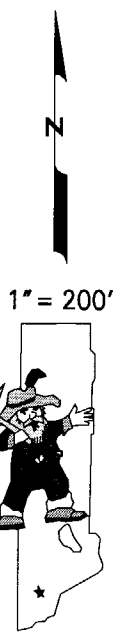


232-38

232-40

232-61

232-62



NGS "CHALK BLUFF"  
N=14,862,838.955  
E= 2,260,459.842

NOTE: This map is prepared for the use of the Washoe County Assessor for assessment and illustrative purposes only. It does not represent a survey of the premises. No liability is assumed as to the sufficiency or the accuracy of the data delineated hereon.

Office of Washoe County Assessor, Nevada - Robert W. McGowan

This area previously shown on 232-38

NOTE: Areas of parcels which are less than 2 acres are shown in square feet.

Drawn by	KSB 11/22/04
Revised	KSB 3/03/05 KSB 8/03/05