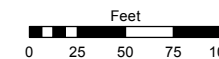


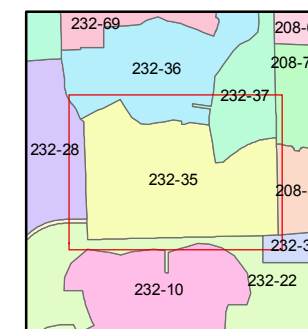
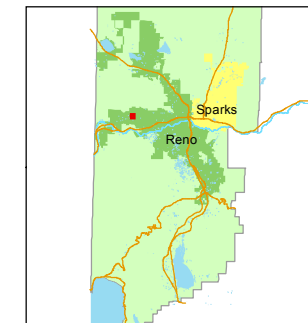
(#4258) CANYON PINES PHASE 1 PORTIONS OF W 1/2 SECTION 1 & E 1/2 SECTION 2, T19N - R18E

STATE OF NEVADA
WASHOE COUNTY
ASSESSOR'S OFFICE
Joshua G. Wilson, Assessor

1001 East Ninth Street
Building D
Reno, Nevada 89512
(775) 328-2231



1 inch = 100 feet



created by: KSB 5/06/2014

last updated: _____

area previously shown on map(s)

039-01, 232-02

NOTE: This map was prepared for the use of the Washoe County Assessor for assessment and illustrative purposes only. It does not represent a survey of the premises. No liability is assumed as to the sufficiency or accuracy of the data delineated hereon.

