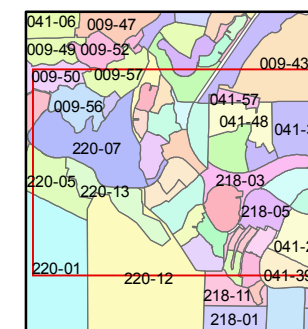
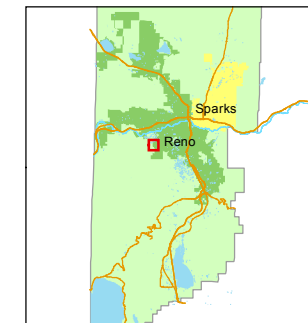


1 inch = 400 feet



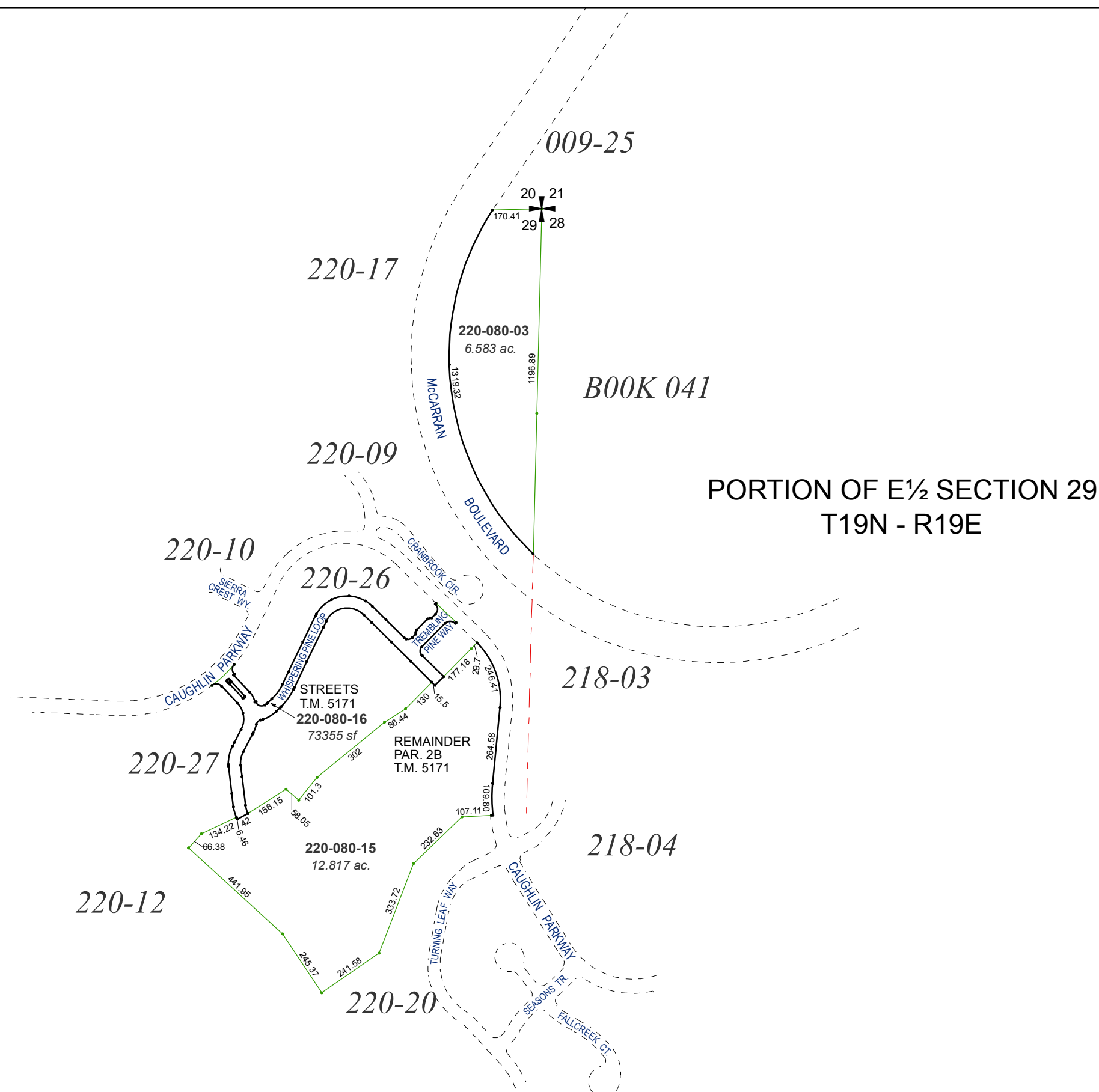
created by: KSB 4/20/2010

last updated: EMG 8/9/16

area previously shown on map(s)

041-02

NOTE: This map was prepared for the use of the Washoe County Assessor for assessment and illustrative purposes only. It does not represent a survey of the premises. No liability is assumed as to the sufficiency or accuracy of the data delineated hereon.



009-25



BOOK 041

PORTION OF E 1/2 SECTION 29  
T19N - R19E

218-03

218-04

220-17

220-09

220-10

220-26

220-27

220-12

220-20

STREETS  
T.M. 5171  
220-080-16  
73355 sf

REMAINDER  
PAR. 2B  
T.M. 5171

220-080-15  
12.817 ac.

SIERRA CREST WY

CAUGHLIN PARKWAY

WHISPERING PINE LOOP

TREMBLING PINE WAY

GRAINBROOK CIR

TURNING LEAF WAY

CAUGHLIN PARKWAY

MASONIC TR

FALLCREEK CT

MCCARRAN BOULEVARD