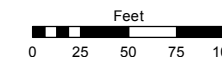
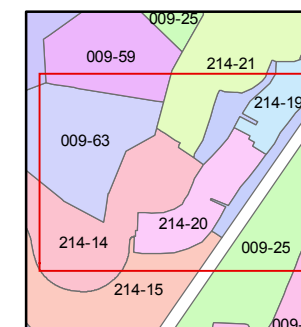
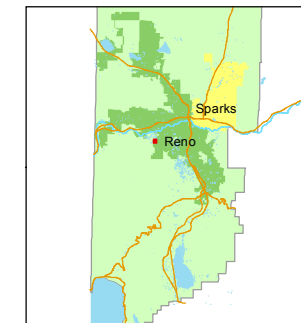


STATE OF NEVADA
WASHOE COUNTY
ASSESSOR'S OFFICE
Joshua G. Wilson, Assessor

1001 East Ninth Street
Building D
Reno, Nevada 89512
(775) 328-2231



1 inch = 100 feet



created by: EG 10/4/2013

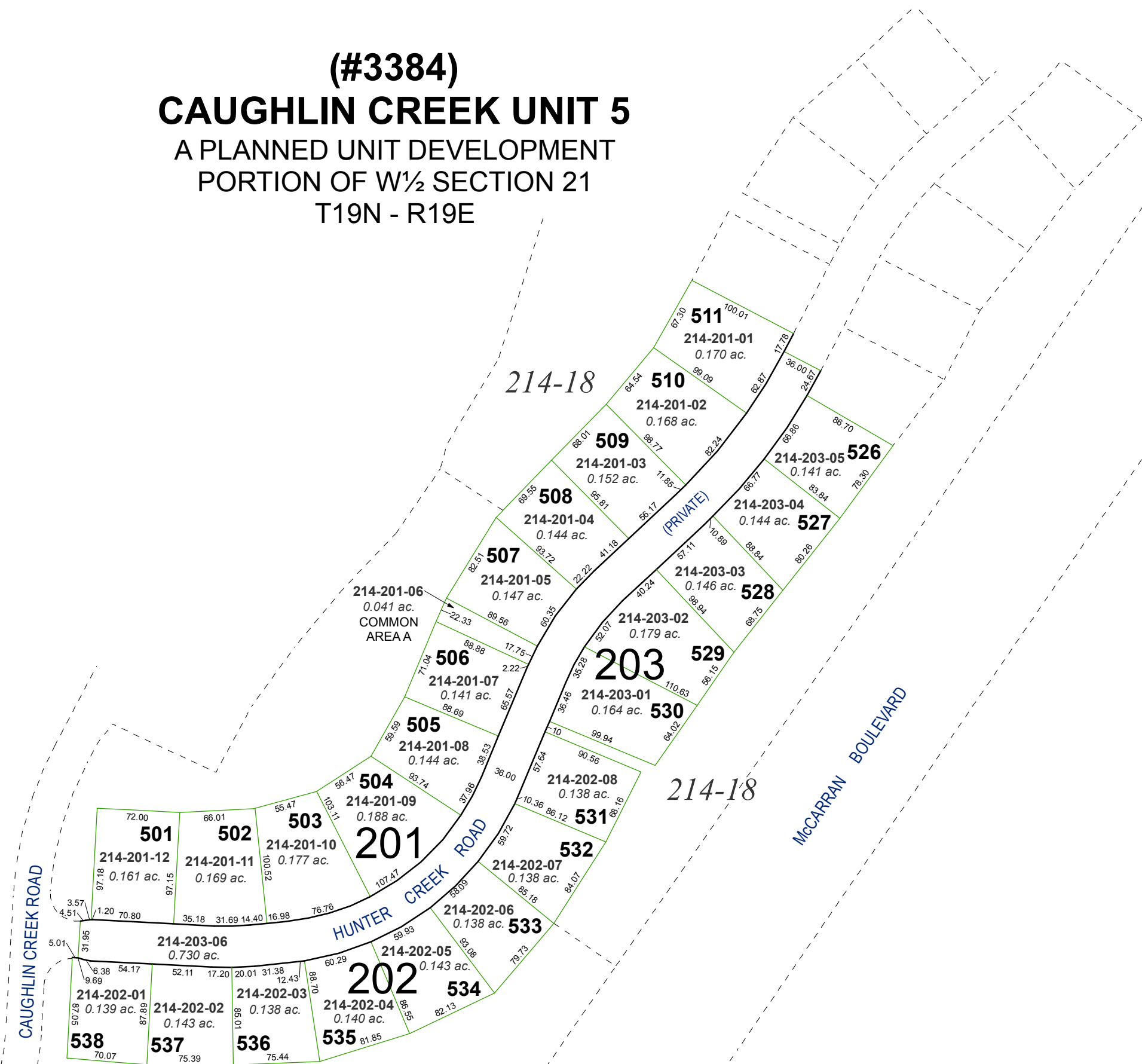
last updated: _____

area previously shown on map(s)

214-01

NOTE: This map was prepared for the use of the Washoe County Assessor for assessment and illustrative purposes only. It does not represent a survey of the premises. No liability is assumed as to the sufficiency or accuracy of the data delineated hereon.

(#3384)
CAUGHLIN CREEK UNIT 5
A PLANNED UNIT DEVELOPMENT
PORTION OF W $\frac{1}{2}$ SECTION 21
T19N - R19E



CAUGHLIN CREEK ROAD

HUNTER CREEK ROAD

MCCARRAN BOULEVARD

214-18

214-18

214-18

214-18