

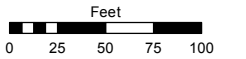
**(#3265)**  
**CAUGHLIN CREEK UNIT 4**  
 PORTION OF W 1/2 SECTION 21 &  
 PORTION OF SE 1/4 SECTION 20  
 T19N - R19E

Assessor's Map Number

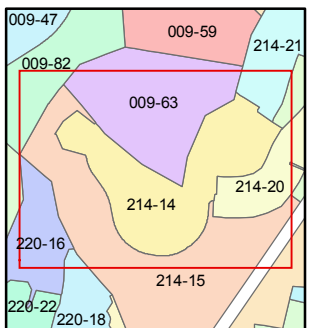
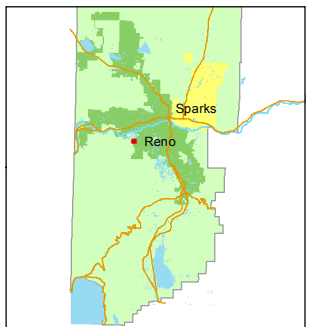
**214-14**

STATE OF NEVADA  
**WASHOE COUNTY**  
**ASSESSOR'S OFFICE**  
 Joshua G. Wilson, Assessor

1001 East Ninth Street  
 Building D  
 Reno, Nevada 89512  
 (775) 328-2231



1 inch = 100 feet



created by: EG 10/4/2013

last updated: \_\_\_\_\_

area previously shown on map(s)

214-01

NOTE: This map was prepared for the use of the Washoe County Assessor for assessment and illustrative purposes only. It does not represent a survey of the premises. No liability is assumed as to the sufficiency or accuracy of the data delineated hereon.

145

214-18

