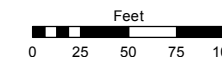
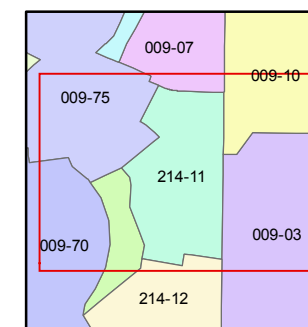
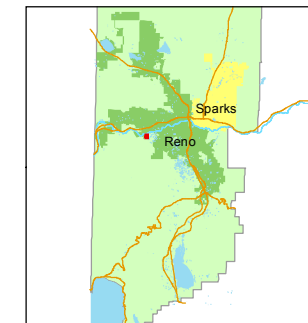


STATE OF NEVADA  
**WASHOE COUNTY**  
ASSESSOR'S OFFICE  
Joshua G. Wilson, Assessor

1001 East Ninth Street  
Building D  
Reno, Nevada 89512  
(775) 328-2231



1 inch = 100 feet

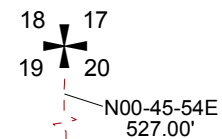


created by: EG 10/4/2013

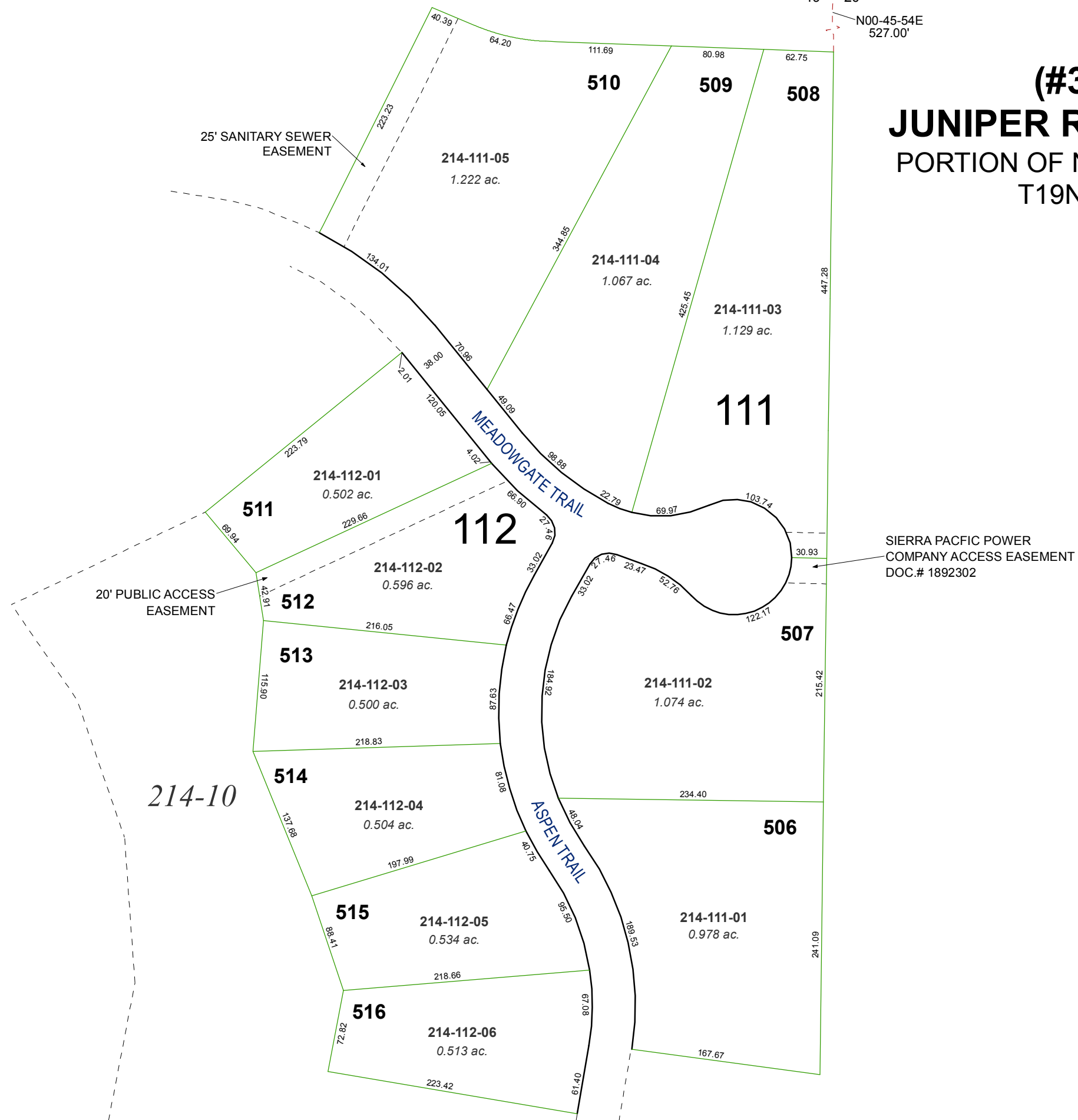
last updated: \_\_\_\_\_

area previously shown on map(s)  
\_\_\_\_\_

NOTE: This map was prepared for the use of the Washoe County Assessor for assessment and illustrative purposes only. It does not represent a survey of the premises. No liability is assumed as to the sufficiency or accuracy of the data delineated hereon.



**(#3240)**  
**JUNIPER RIDGE UNIT 5**  
PORTION OF NE¼ SECTION 19  
T19N - R19E



214-10