

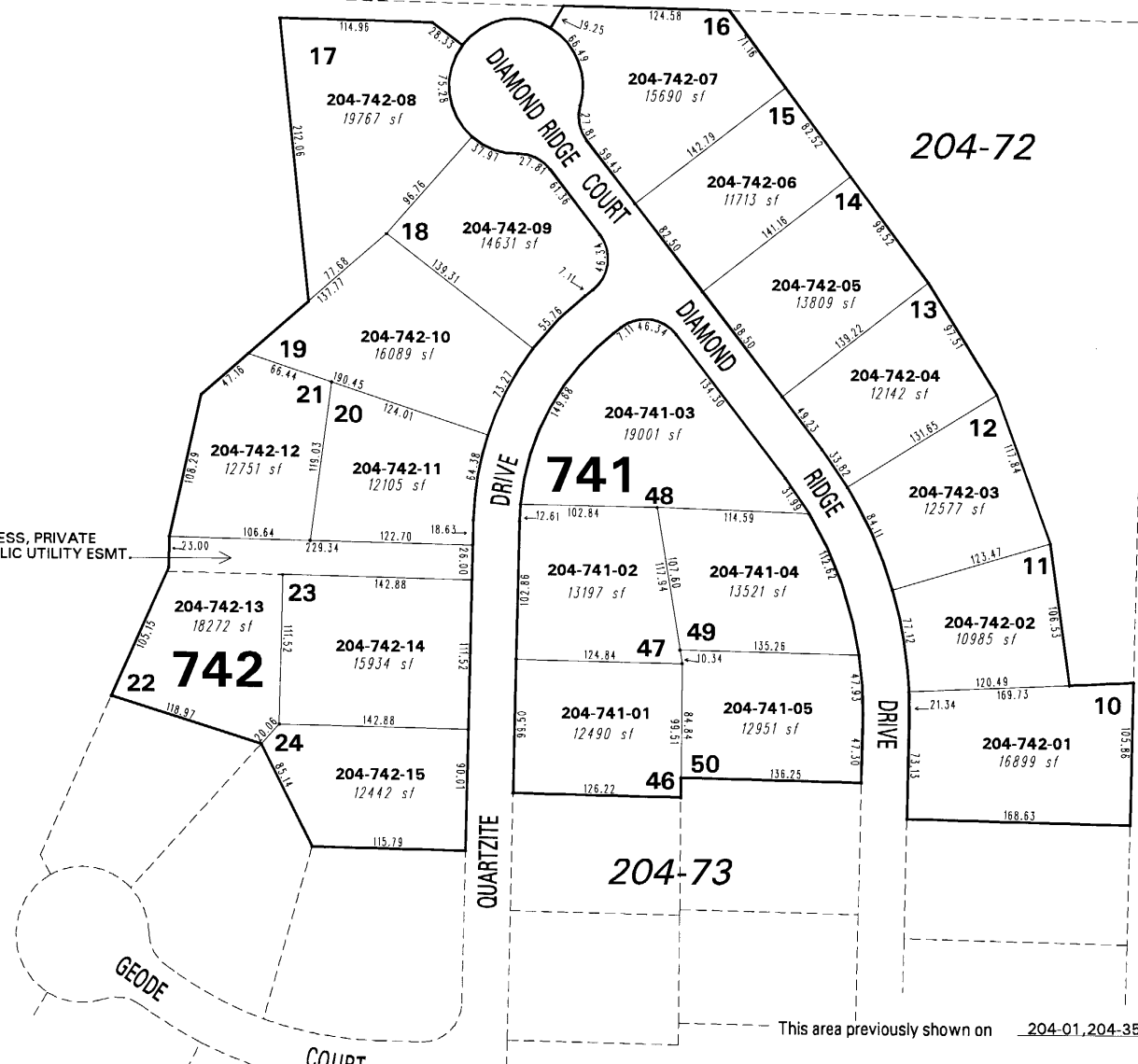
**(#4350)**  
**SILVERADO RANCH ESTATES**  
**UNIT 9**  
PORTION OF THE SE 1/4 SEC. 31  
T20N - R19E  
AND THE NW 1/4 SEC. 5 & NE 1/4 SEC. 6  
T19N -R19E

082-44

204-72

082-43

PEDESTRIAN ACCESS, PRIVATE DRAINAGE, & PUBLIC UTILITY ESMT.



NOTE: This map is prepared for the use of the Washoe County Assessor for assessment and illustrative purposes only. It does not represent a survey of the premises. No liability is assumed as to the sufficiency or the accuracy of the data delineated hereon.

Office of Washoe County Assessor, Nevada - Robert W. McGowan

NOTE: Areas of parcels which are less than 2 acres are shown in square feet.

Drawn by	PK 06/30/04
Revised	

ARC/INFO 8.1.2 WINDOWS 2000 5.0

