

082-44

082-44

**(#4350)**  
**SILVERADO RANCH ESTATES**  
**UNIT 9**  
 PORTION OF THE SE 1/4 SEC. 31  
 T20N - R19E  
 AND THE NW 1/4 SEC. 5 & NE 1/4 SEC. 6  
 T19N - R19E

082-43

204-38

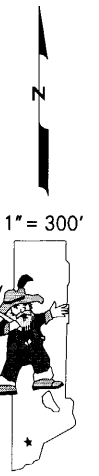
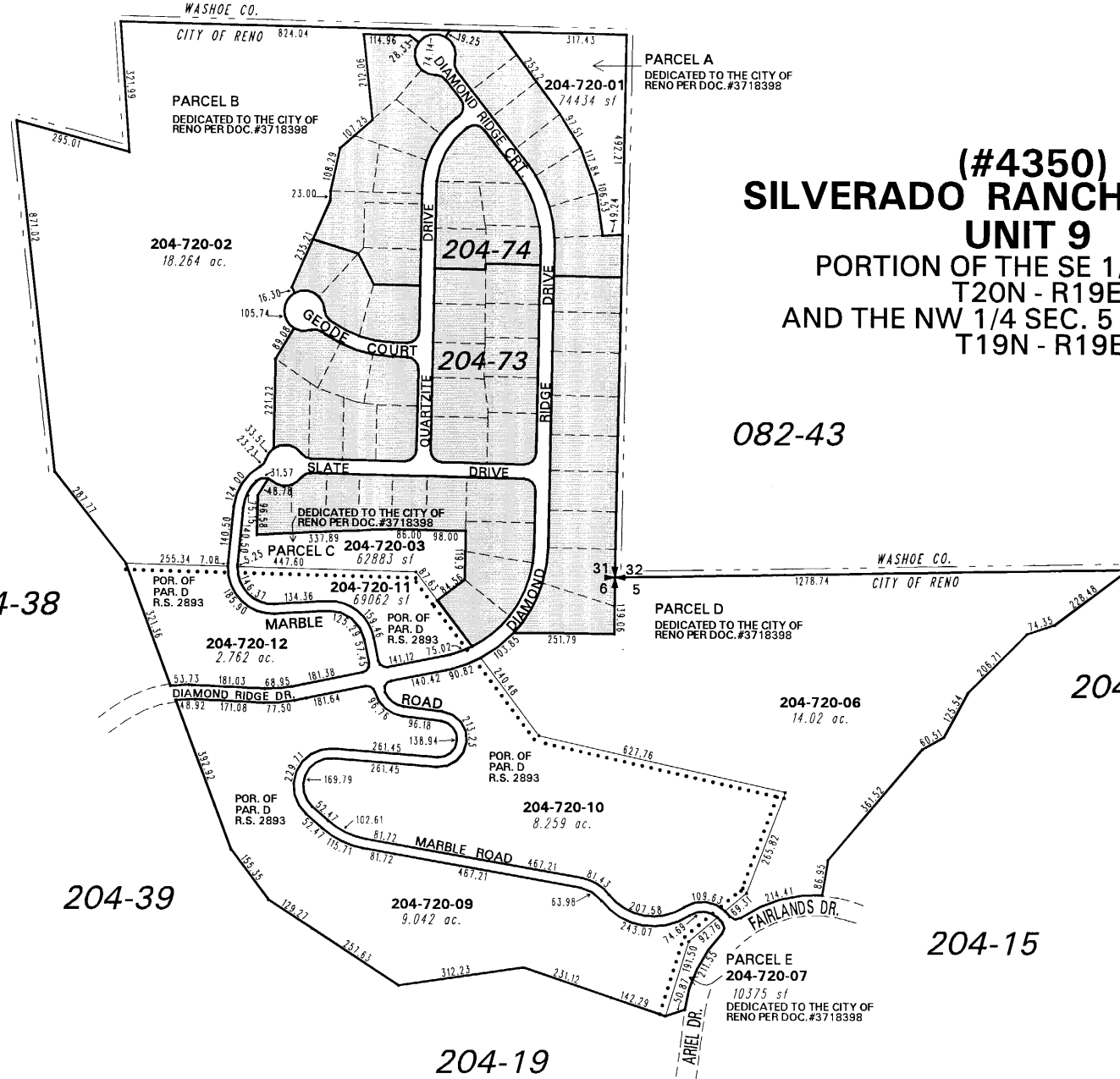
204-39

204-19

204-720-06  
14.02 ac.

204-18

204-15



NOTE: This map is prepared for the use of the Washoe County Assessor for assessment and illustrative purposes only. It does not represent a survey of the premises. No liability is assumed as to the sufficiency or the accuracy of the data delineated hereon.

Office of Washoe County Assessor, Nevada - Joshua G. Wilson

This area previously shown on 204-01 204-35

NOTE: Areas of parcels which are less than 2 acres are shown in square feet.

Drawn by	PK 06/29/04
Revised	NLH 2/12/08 NLH 1/27/09