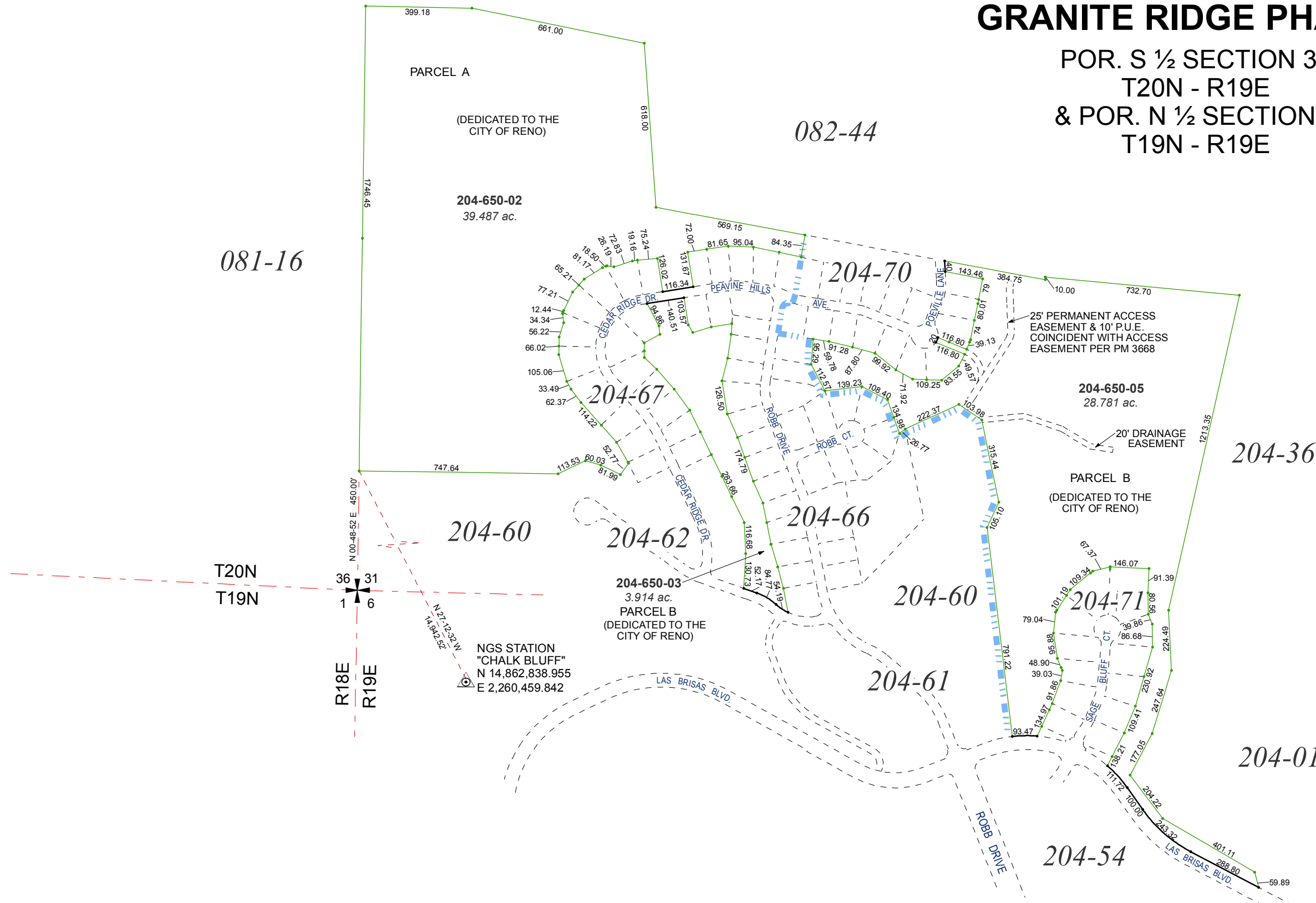


**(#4208)
GRANITE RIDGE PHASE 2**

**(#4348)
GRANITE RIDGE PHASE 3**

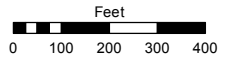
POR. S 1/2 SECTION 31
T20N - R19E
& POR. N 1/2 SECTION 6
T19N - R19E



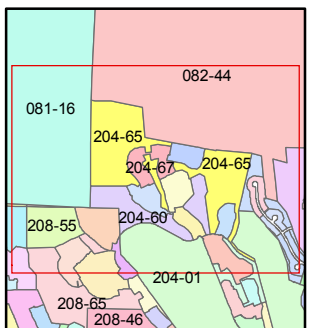
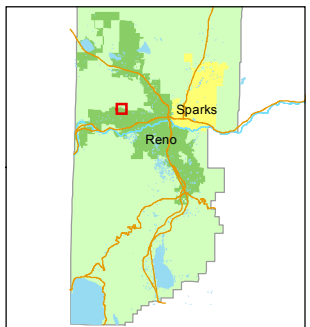
Assessor's Map Number
204-65

STATE OF NEVADA
WASHOE COUNTY
ASSESSOR'S OFFICE
Michael E. Clark, Assessor

1001 East Ninth Street
Building D
Reno, Nevada 89512
(775) 328-2231



1 inch = 400 feet



created by: KSB 7/15/2015

last updated: _____

area previously shown on map(s)
082-44, 204-60

NOTE: This map was prepared for the use of the Washoe County Assessor for assessment and illustrative purposes only. It does not represent a survey of the premises. No liability is assumed as to the sufficiency or accuracy of the data delineated hereon.