

(#4131)  
**SAPPHIRE RIDGE  
PHASE 2**  
POR. SECTIONS 5 & 6  
T19N - R19E

204-41

204-48

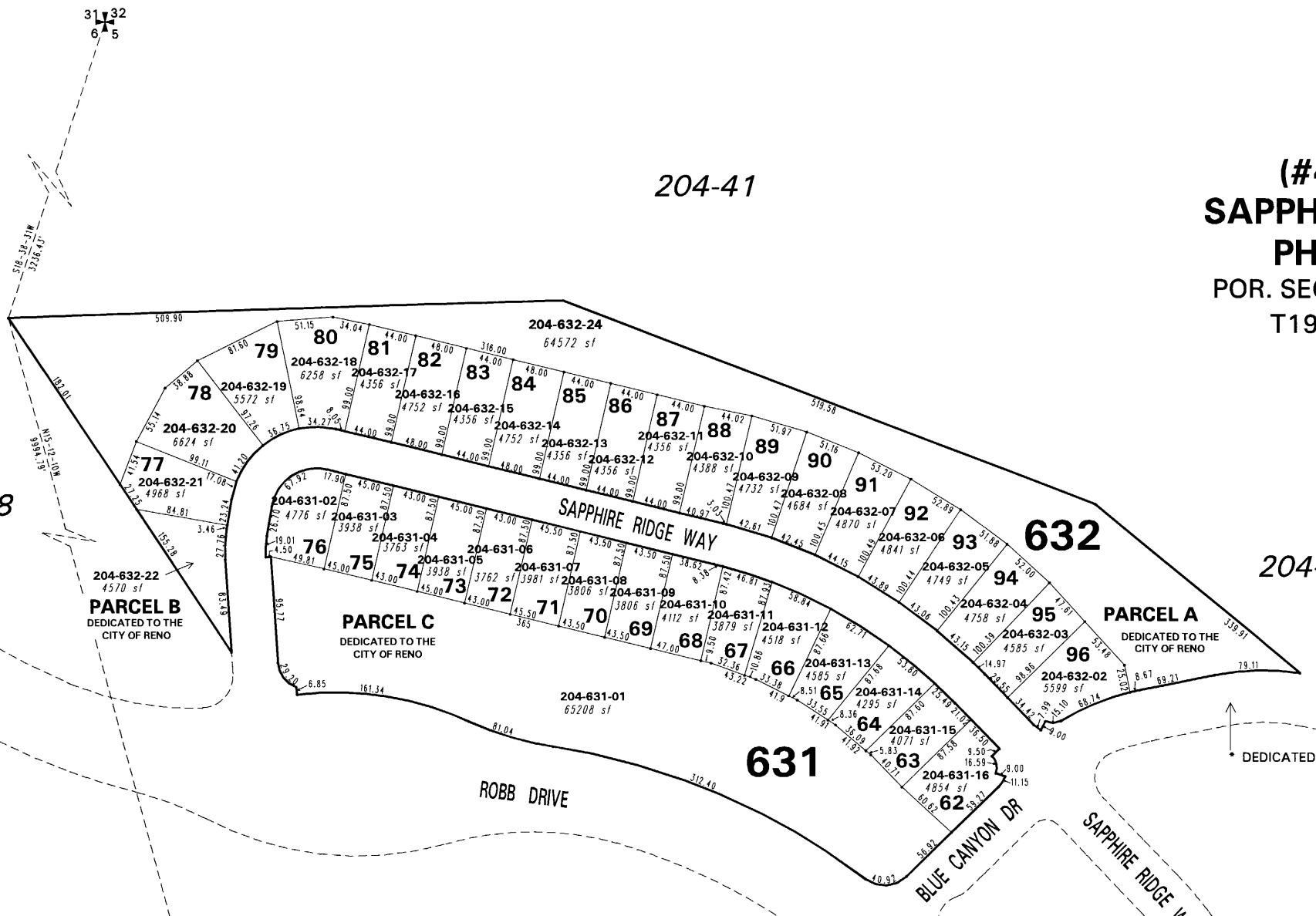
204-68

204-57

204-59

204-01

204-57



31 32  
6 5

204-632-22  
4570 sf  
**PARCEL B**  
DEDICATED TO THE  
CITY OF RENO

**PARCEL C**  
DEDICATED TO THE  
CITY OF RENO

**PARCEL A**  
DEDICATED TO THE  
CITY OF RENO

NGS STATION  
"CHALK BLUFF"  
N 14,862,838.955  
E 2,260,459.842

DEDICATED PER DOC. 3224546

NOTE: This map is prepared for the use of the Washoe County Assessor for assessment and illustrative purposes only. It does not represent a survey of the premises. No liability is assumed as to the sufficiency or the accuracy of the data delineated hereon.

Office of Washoe County Assessor, Nevada - Robert W. McGowan

This area previously shown on 204-57

NOTE: Areas of parcels which are less than 2 acres are shown in square feet.

Drawn by HCS 11/14/02  
Revised HCS 6/20/03 PK 6/24/05

