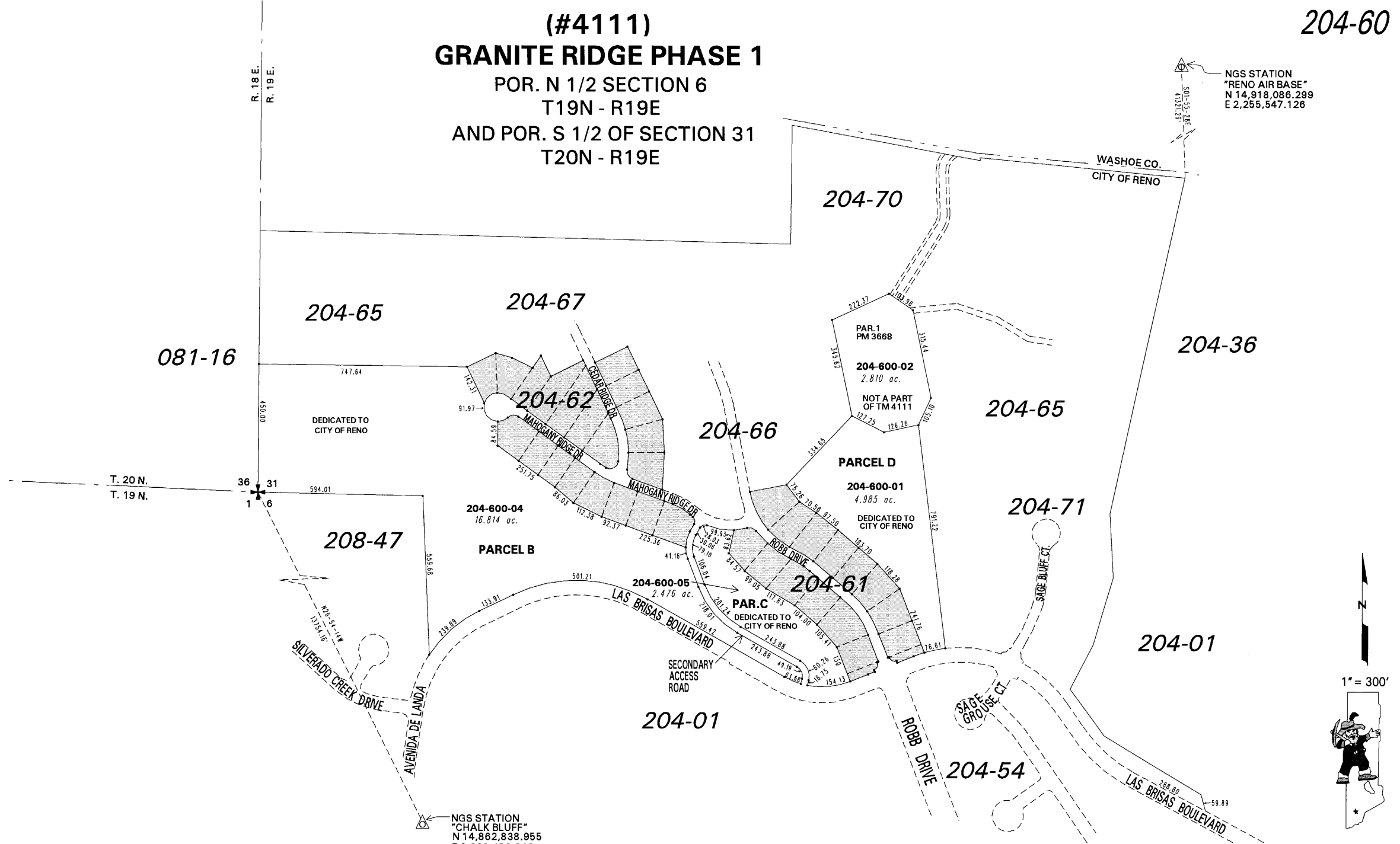


(#4111)
GRANITE RIDGE PHASE 1
POR. N 1/2 SECTION 6
T19N - R19E
AND POR. S 1/2 OF SECTION 31
T20N - R19E

NGS STATION
"RENO AIR BASE"
N 14,918,086.299
E 2,255,547.126



081-16

204-65

204-67

204-62

204-66

204-70

204-36

204-65

204-71

204-61

204-01

204-01

204-54

NOTE: This map is prepared for the use of the Washoe County Assessor for assessment and illustrative purposes only. It does not represent a survey of the premises. No liability is assumed as to the sufficiency or the accuracy of the data delineated hereon.

Office of Washoe County Assessor, Nevada - Joshua G. Wilson

This area previously shown on 82-44, 204-01 & 35

NOTE: Areas of parcels which are less than 2 acres are shown in square feet.

Drawn by HCS 08/29/02
Revised PK 5/08/05 PK 7/24/06
NLH 06/01/07