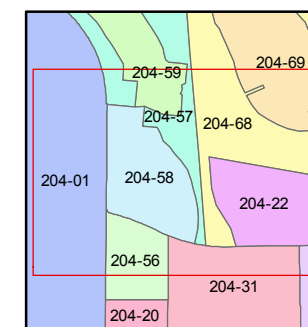
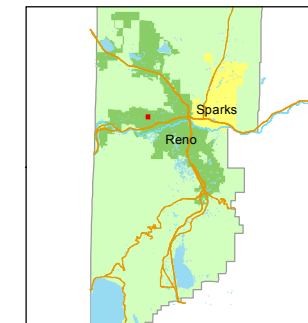


STATE OF NEVADA
WASHOE COUNTY
ASSESSOR'S OFFICE
Michael E. Clark, Assessor

1001 East Ninth Street
Building D
Reno, Nevada 89512
(775) 328-2231



1 inch = 100 feet



created by: JMO 11/02/2016

last updated: _____

area previously shown on map(s)

204-01, 204-02

NOTE: This map was prepared for the use of the Washoe County Assessor for assessment and illustrative purposes only. It does not represent a survey of the premises. No liability is assumed as to the sufficiency or accuracy of the data delineated hereon.

(#4060) SAPPHIRE RIDGE PHASE 1

PORTION OF SECTIONS 5 & 6
T19N - R19E

