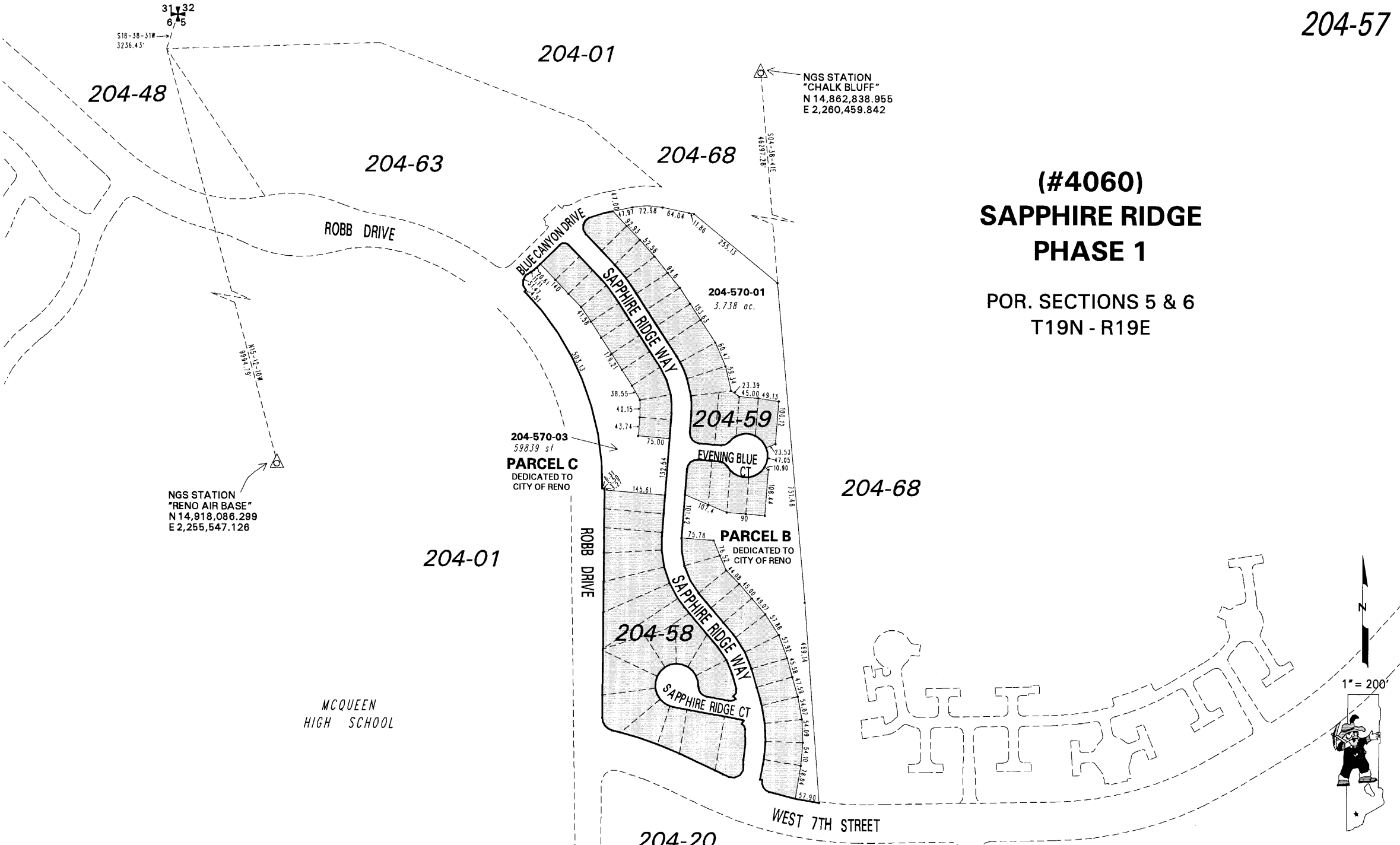


(#4060) SAPPHIRE RIDGE PHASE 1

POR. SECTIONS 5 & 6
T19N - R19E



NGS STATION
"RENO AIR BASE"
N 14,918,086.299
E 2,255,547.126

NGS STATION
"CHALK BLUFF"
N 14,862,838.955
E 2,280,459.842

204-570-03
598,399 sf
PARCEL C
DEDICATED TO
CITY OF RENO

PARCEL B
DEDICATED TO
CITY OF RENO

NOTE: This map is prepared for the use of the Washoe County Assessor for assessment and illustrative purposes only. It does not represent a survey of the premises. No liability is assumed as to the sufficiency or the accuracy of the data delineated hereon.

Office of Washoe County Assessor, Nevada - Robert W. McGowan

This area previously shown on 204-01 & 204-02

NOTE: Areas of parcels which are less than 2 acres are shown in square feet.

Drawn by	HCS	03/19/02
Revised	HCS 11/15/02	HCS 6/20/03
PK	1/26/05	PK 9/14/05 PK 4/11/06