

204-56

(#4692)

HIGHLAND PLACE

SW 1/4 OF SECTION 5,
T19N - R19E

204-58

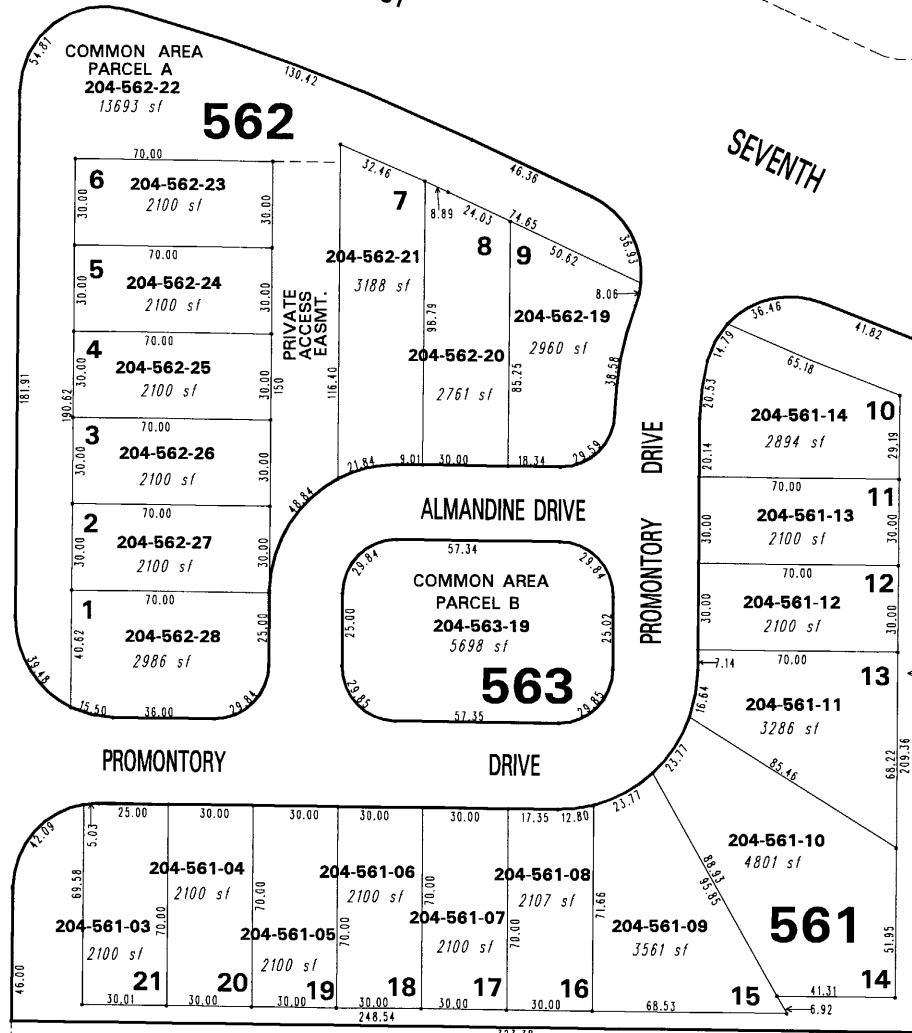
WEST

SAPPHIRE RIDGE WAY

SEVENTH

STREET

DRIVE



204-01

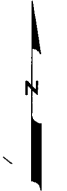
McQUEEN
HIGH SCHOOL

ROBB

204-20

204-31

DAYLIN CRT.



1" = 50'



NOTE: This map is prepared for the use of the Washoe County Assessor for assessment and illustrative purposes only. It does not represent a survey of the premises. No liability is assumed as to the sufficiency or the accuracy of the data delineated hereon.

Office of Washoe County Assessor, Nevada - Joshua G. Wilson

This area previously shown on 204-56

NOTE: Areas of parcels which are less than 2 acres are shown in square feet.

Drawn by PK 9/7/06
Revised NLH 8/28/07