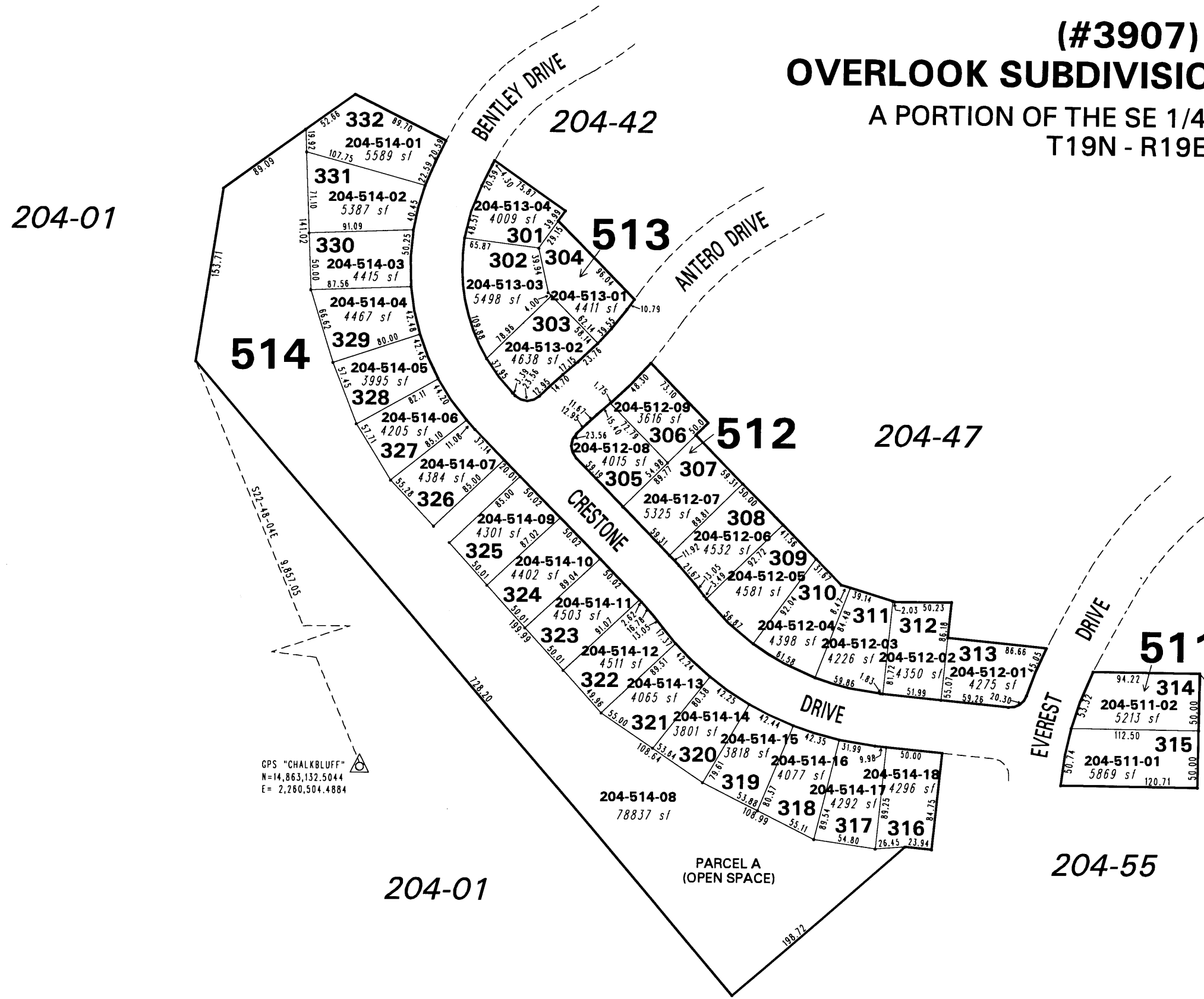
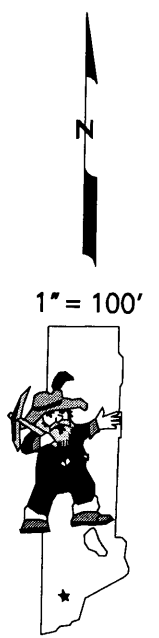


(#3907)
OVERLOOK SUBDIVISION UNIT THREE
A PORTION OF THE SE 1/4 OF SECTION 6
T19N - R19E



GPS "CHALKBLUFF"
N=14,863,132.5044
E= 2,260,504.4884



NOTE: This map is prepared for the use of the Washoe County Assessor for assessment and illustrative purposes only. It does not represent a survey of the premises. No liability is assumed as to the sufficiency or the accuracy of the data delineated hereon.

Office of Washoe County Assessor, Nevada - Robert W. McGowan

This area previously shown on 204-01

NOTE: Areas of parcels which are less than 2 acres are shown in square feet.

Drawn by KSB 02/26/01
Revised HCS 4/4/01 HCS 9/21/01
HCS 6/19/03