

204-01

204-38

DIAMOND RIDGE DRIVE

204-36

204-72

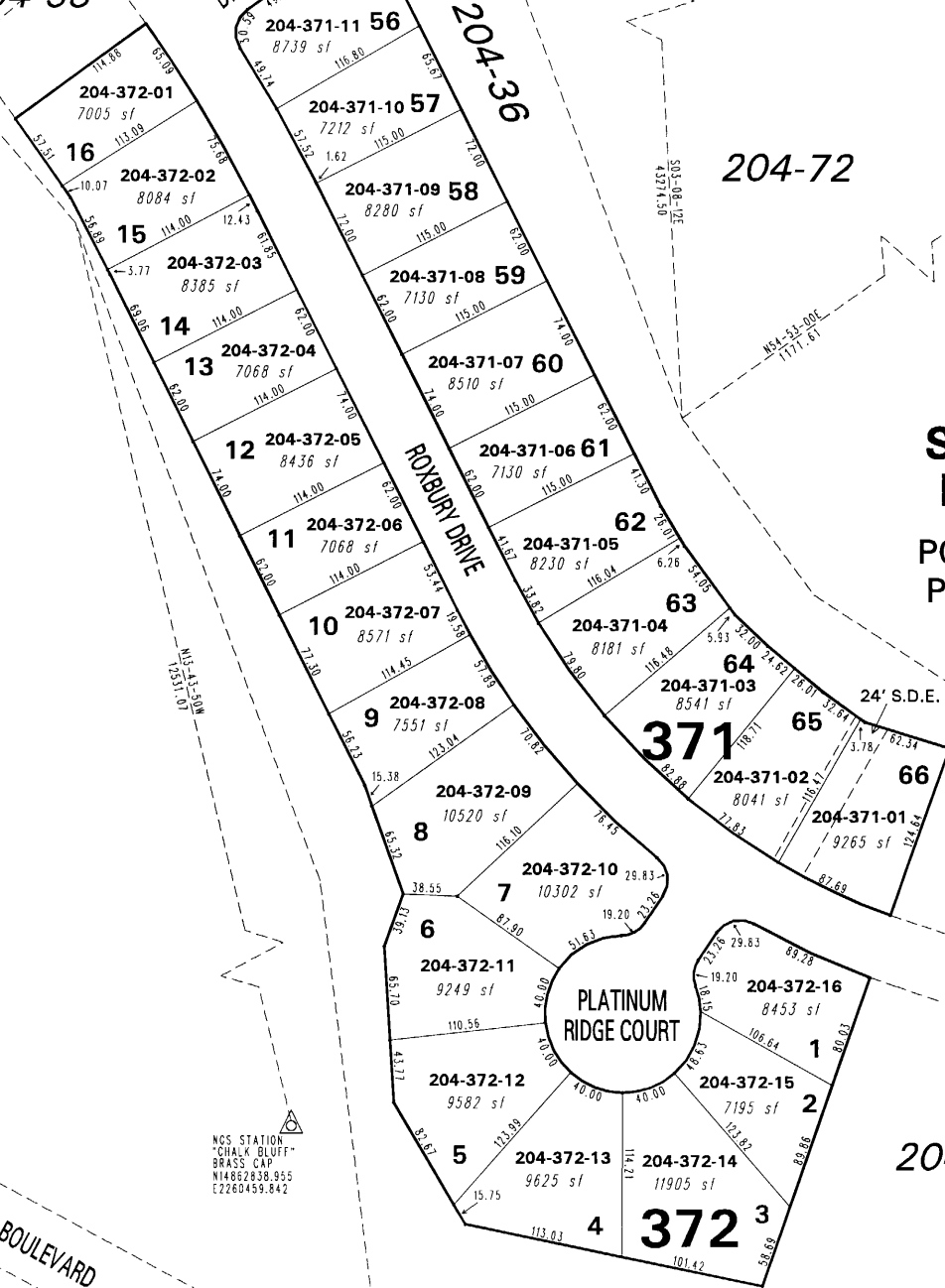
**(#3676)
SILVERADO RANCH
ESTATES - UNIT 8**

POR. SEC. 31, T20N - R19E
POR. SEC. 6, T19N - R19E

LAS BRISAS BOULEVARD

ROXBURY DRIVE

PLATINUM RIDGE COURT



NOTE: This map is prepared for the use of the Washoe County Assessor for assessment and illustrative purposes only. It does not represent a survey of the premises. No liability is assumed as to the sufficiency or the accuracy of the data delineated hereon.

Office of Washoe County Assessor, Nevada - Joshua G. Wilson

204-36

This area previously shown on 204-35

NOTE: Areas of parcels which are less than 2 acres are shown in square feet.

Drawn by	KS 05/11/99
Revised	HCS 2/4/02 KSB 4/19/02
CFB 5/8/2004	NLH 1/27/09