

(#3528)

MORNINGSTAR AT NORTHGATE
UNIT 3

A PORTION OF SECTION 5
T19N - R19E

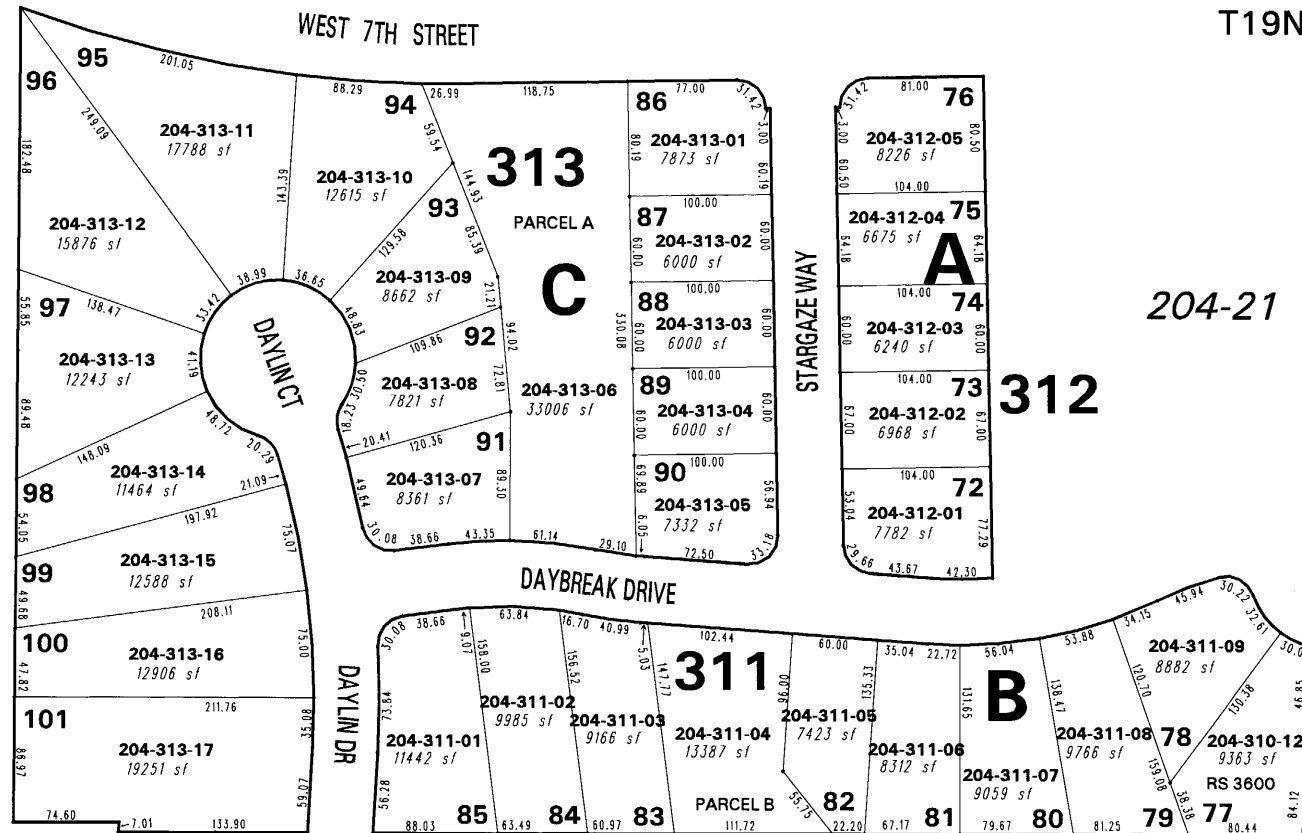
204-58

204-57

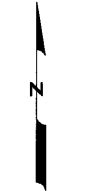
204-22

204-21

204-56



BOOK 39



1" = 100'



NOTE: This map is prepared for the use of the Washoe County Assessor for assessment and illustrative purposes only. It does not represent a survey of the premises. No liability is assumed as to the sufficiency or the accuracy of the data delineated hereon.

Office of Washoe County Assessor, Nevada - Robert W. McGowan

This area previously shown on 204-02

NOTE: Areas of parcels which are less than 2 acres are shown in square feet.

Drawn by	5/05/98 RLT
Revised	DSR 5/20/99 CFB 10/4/00
HCS 3/22/02 PK 9/7/06	