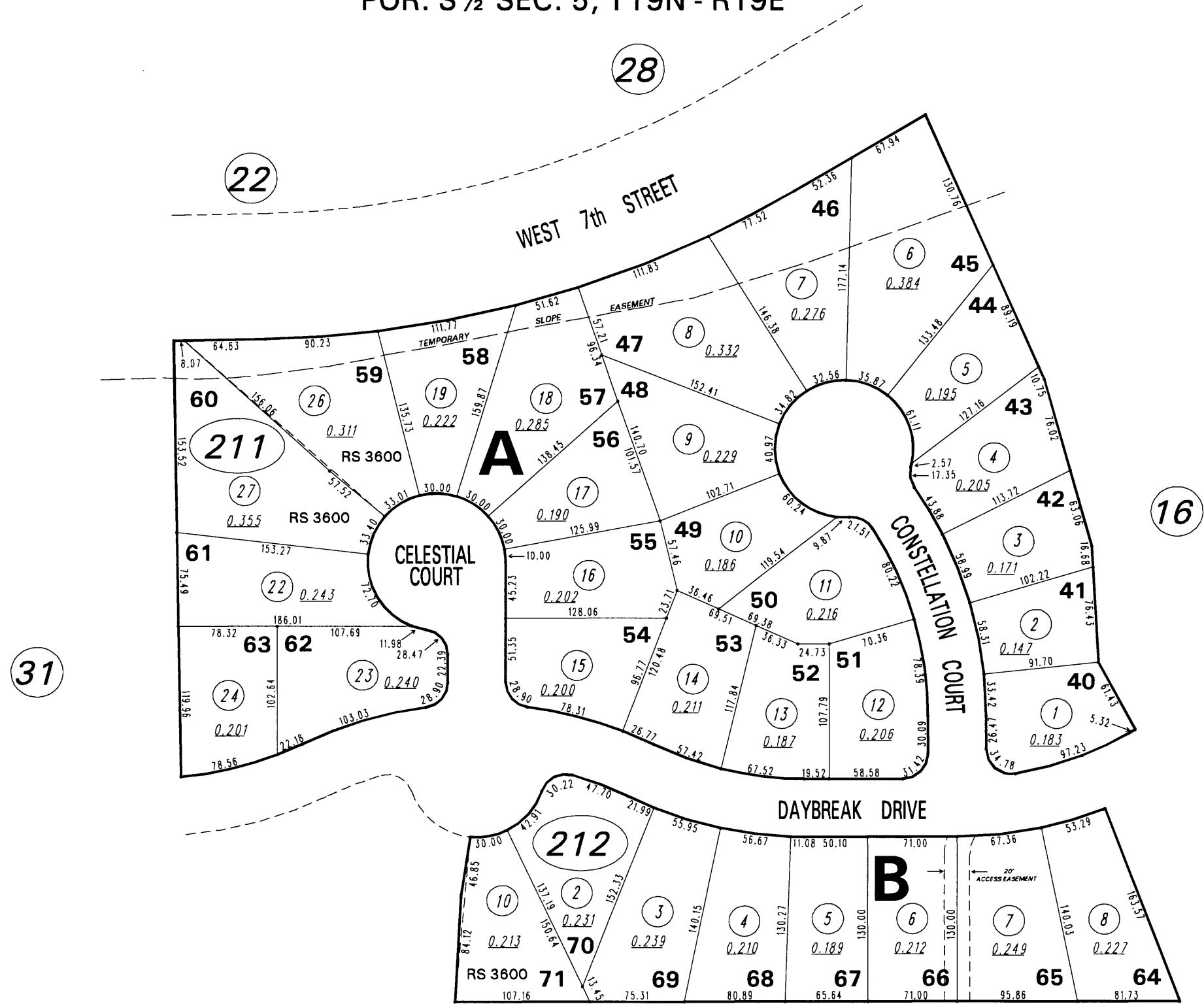


MORNINGSTAR AT NORTHGATE UNIT #2 (#3390)

POR. S 1/2 SEC. 5, T19N - R19E

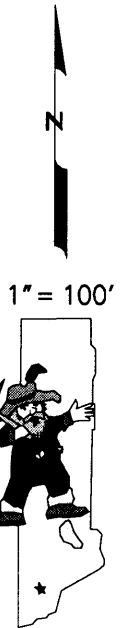


31

16

28

22



BK 39

NOTE: This map is prepared for the use of the Washoe County Assessor for assessment and illustrative purposes only. It does not represent a survey of the premises. No liability is assumed as to the sufficiency or the accuracy of the data delineated hereon.

Office of Washoe County Assessor, Nevada - Robert W. McGowan

This area previously shown on 204-02

NOTE:
ASSESSOR'S BLOCK NUMBERS SHOWN IN ELLIPSES
ASSESSOR'S PARCEL NUMBERS SHOWN IN CIRCLES

Drawn by GZ 6/12/97
Revised 5/07/98 RLT 12/22/98 DSR
DSR 5/19/99* CFB 10/4/00