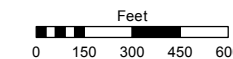
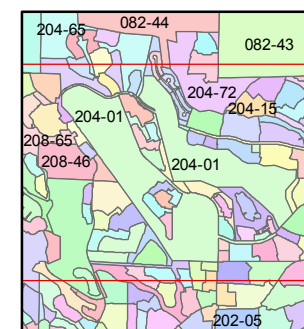
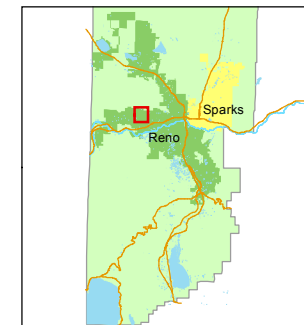


STATE OF NEVADA
WASHOE COUNTY
ASSESSOR'S OFFICE
Michael E. Clark, Assessor

1001 East Ninth Street
Building D
Reno, Nevada 89512
(775) 328-2231



1 inch = 600 feet

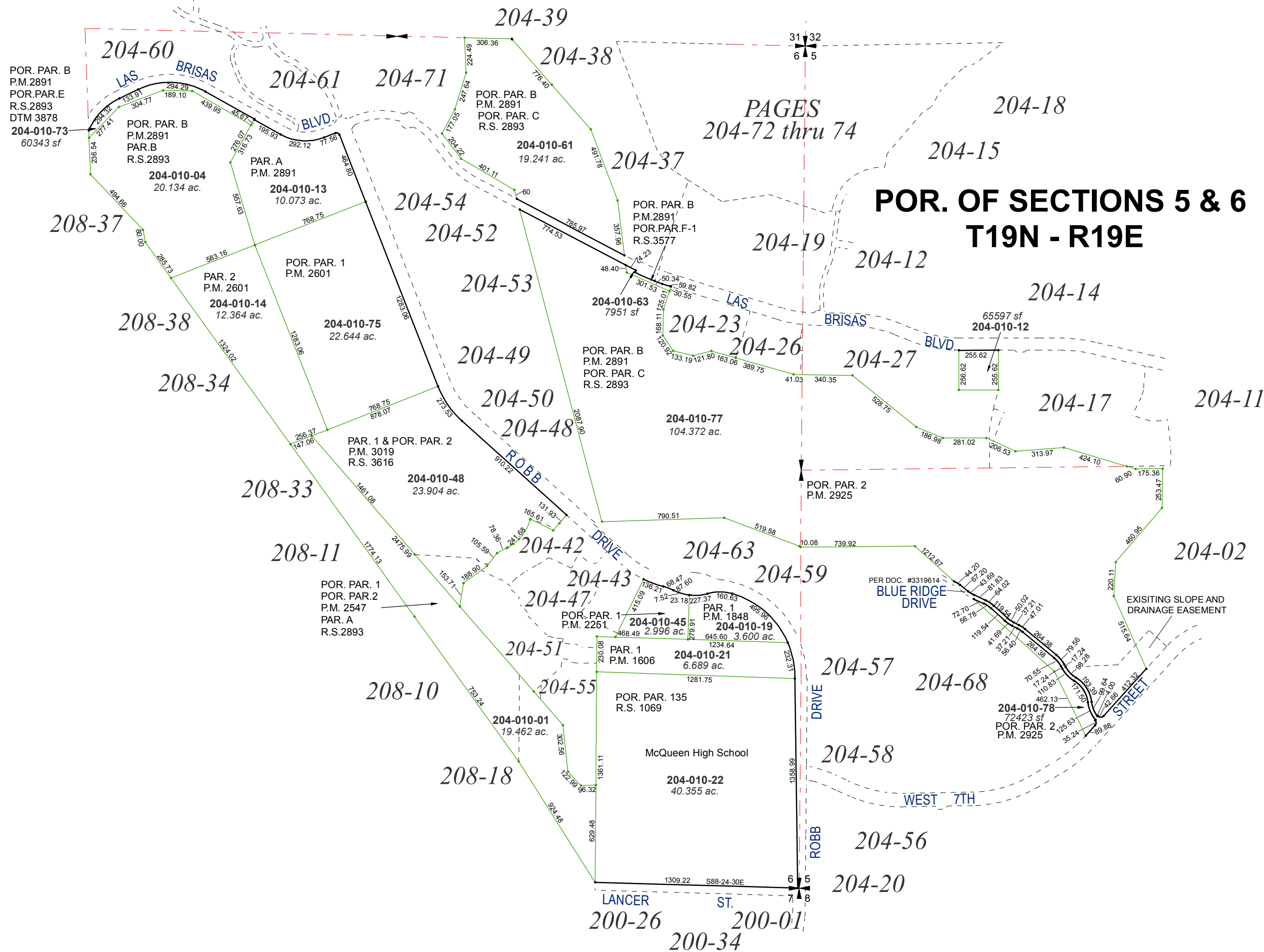


created by: CFB 07/13/2015

last updated:

area previously shown on map(s)

NOTE: This map was prepared for the use of the Washoe County Assessor for assessment and illustrative purposes only. It does not represent a survey of the premises. No liability is assumed as to the sufficiency or accuracy of the data delineated hereon.



31 32
6 5

6 5
7 8

PAGES
204-72 thru 74

**POR. OF SECTIONS 5 & 6
T19N - R19E**

PER DOC. #3319614
BLUE RIDGE DRIVE

EXISTING SLOPE AND DRAINAGE EASEMENT

McQueen High School

WEST 7TH

LANCER ST.

POR. PAR. B
P.M.2891
POR.PAR.E
R.S.2893
DTM 3878
204-010-73
60343 sf

POR. PAR. B
P.M.2891
PAR.B
R.S.2893
204-010-04
20.134 ac.

PAR. A
P.M. 2891
204-010-13
10.073 ac.

POR. PAR. B
P.M. 2891
POR. PAR. C
R.S. 2893
204-010-61
19.241 ac.

POR. PAR. B
P.M.2891
POR.PAR.F-1
R.S.3577
204-010-63
7951 sf

POR. PAR. B
P.M. 2891
POR. PAR. C
R.S. 2893
204-010-63
7951 sf

204-010-77
104.372 ac.

POR. PAR. 2
P.M. 2925
204-010-78
72423 sf
POR. PAR. 2
P.M. 2925

POR. PAR. 1
P.M. 2251
204-010-45
468.49 2.996 ac.

PAR. 1
P.M. 1848
204-010-19
645.60 3.600 ac.

PAR. 1
P.M. 1606
204-010-21
1234.64
6.689 ac.

POR. PAR. 135
R.S. 1069
204-010-22
40.355 ac.

POR. PAR. 1
POR. PAR.2
P.M. 2547
PAR. A
R.S.2893

POR. PAR. 1
P.M. 2601
204-010-14
12.364 ac.

PAR. 1 & POR. PAR. 2
P.M. 3019
R.S. 3616
204-010-48
23.904 ac.

204-010-48
23.904 ac.

204-010-01
19.462 ac.

204-010-01
19.462 ac.

200-26 200-01
200-34

204-18

204-15

204-19

204-12

204-14

204-17

204-11

204-02

204-57

204-68

204-58

204-56

204-20

204-39

204-38

204-37

204-54

204-52

204-53

204-49

204-50

204-48

204-42

204-43

204-47

204-51

204-55

204-60

204-61

204-71

208-37

208-38

208-34

208-33

208-11

208-10

208-18