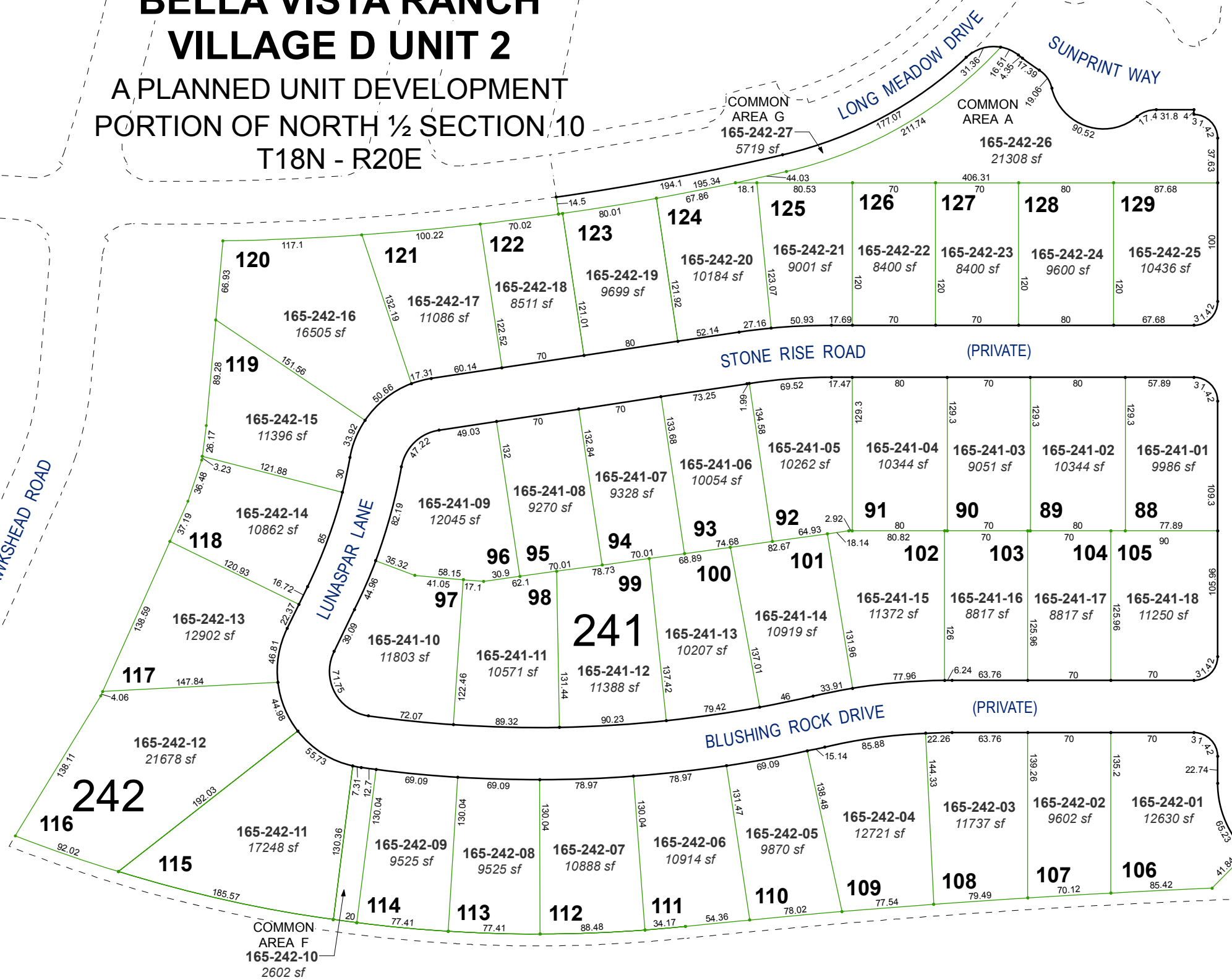


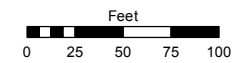
**(#5185)
BELLA VISTA RANCH
VILLAGE D UNIT 2
A PLANNED UNIT DEVELOPMENT
PORTION OF NORTH 1/2 SECTION 10
T18N - R20E**



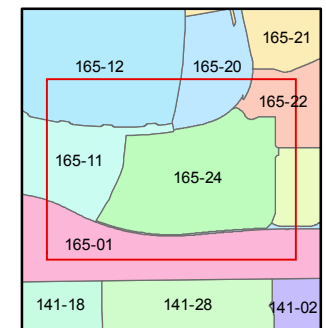
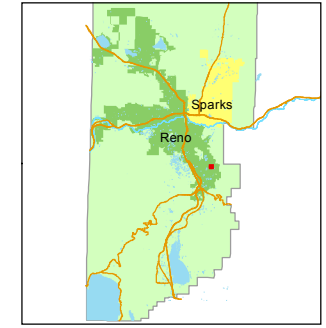
Assessor's Map Number
165-24

STATE OF NEVADA
WASHOE COUNTY
ASSESSOR'S OFFICE
Michael E. Clark, Assessor

1001 East Ninth Street
Building D
Reno, Nevada 89512
(775) 328-2231



1 inch = 100 feet



created by: EMG 11/10/2016
last updated: _____
area previously shown on map(s)
165-01

NOTE: This map was prepared for the use of the Washoe County Assessor for assessment and illustrative purposes only. It does not represent a survey of the premises. No liability is assumed as to the sufficiency or accuracy of the data delineated hereon.

Note: Roads are Parcelled on Page 165-20