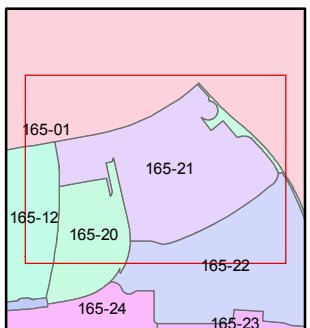
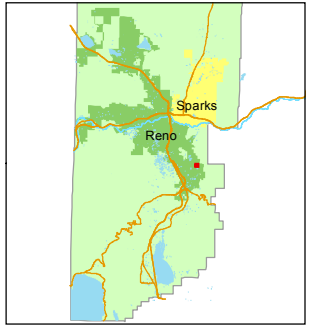
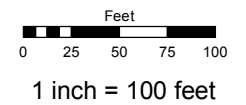


**(#5185)**  
**BELLA VISTA RANCH**  
**VILLAGE D UNIT 2**  
 A PLANNED UNIT DEVELOPMENT  
 PORTION OF N½ SECTION 10  
 T18N - R20E

Assessor's Map Number  
**165-21**

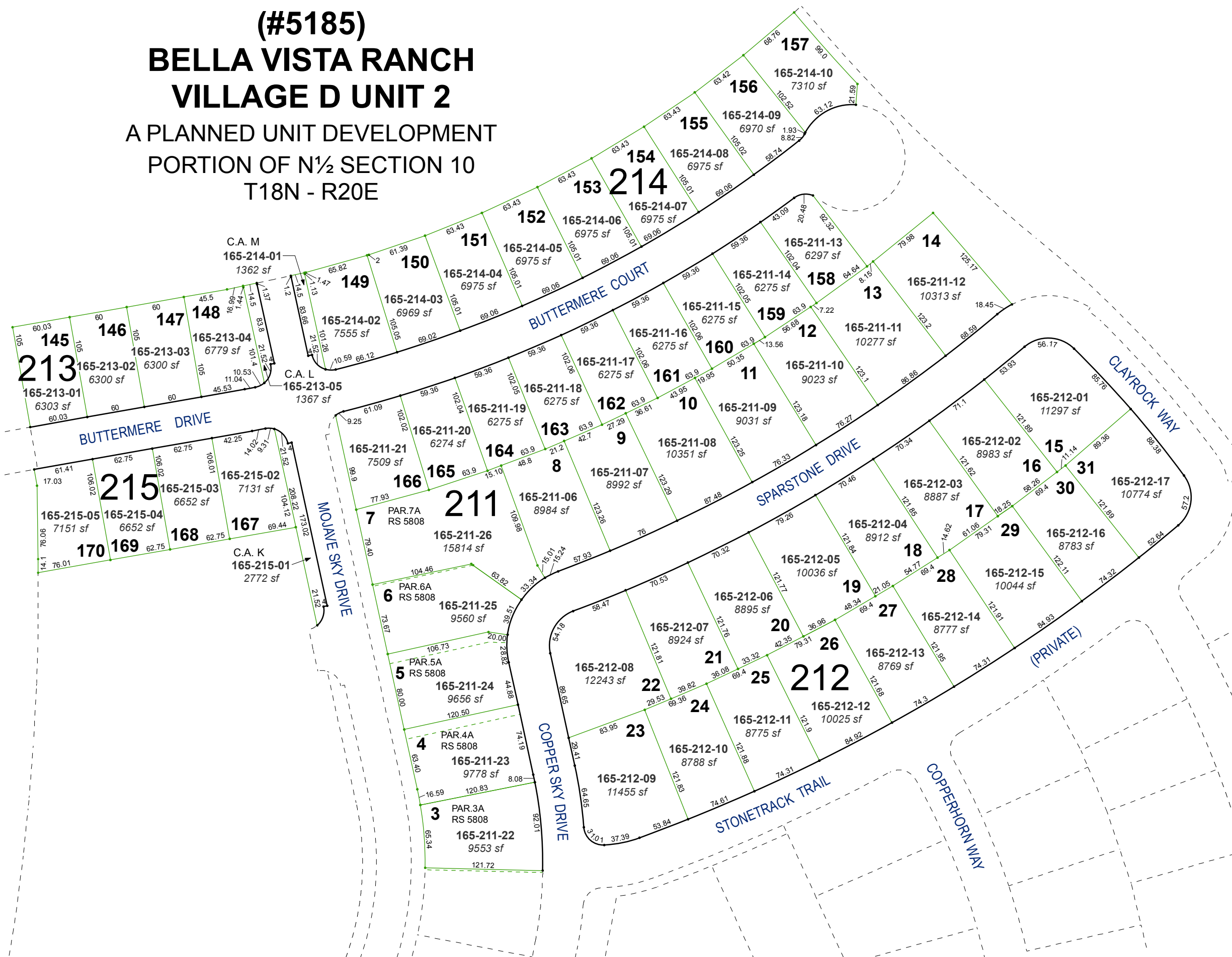
STATE OF NEVADA  
**WASHOE COUNTY**  
 ASSESSOR'S OFFICE  
 Michael E. Clark, Assessor

1001 East Ninth Street  
 Building D  
 Reno, Nevada 89512  
 (775) 328-2231



created by: EMG 11/10/2016  
 last updated: SR 3/16/17  
 area previously shown on map(s)  
165-01

NOTE: This map was prepared for the use of the Washoe County Assessor for assessment and illustrative purposes only. It does not represent a survey of the premises. No liability is assumed as to the sufficiency or accuracy of the data delineated hereon.



Note: C.A. = COMMON AREA  
 Roads are Parcelled on Page 165-20