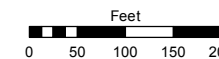
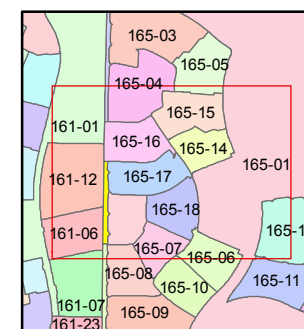
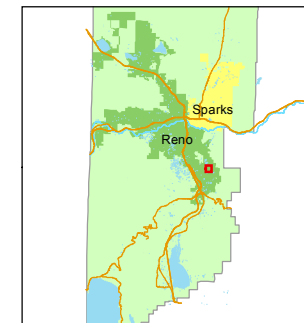


STATE OF NEVADA
WASHOE COUNTY
ASSESSOR'S OFFICE
Michael E. Clark, Assessor

1001 East Ninth Street
Building D
Reno, Nevada 89512
(775) 328-2231



1 inch = 200 feet



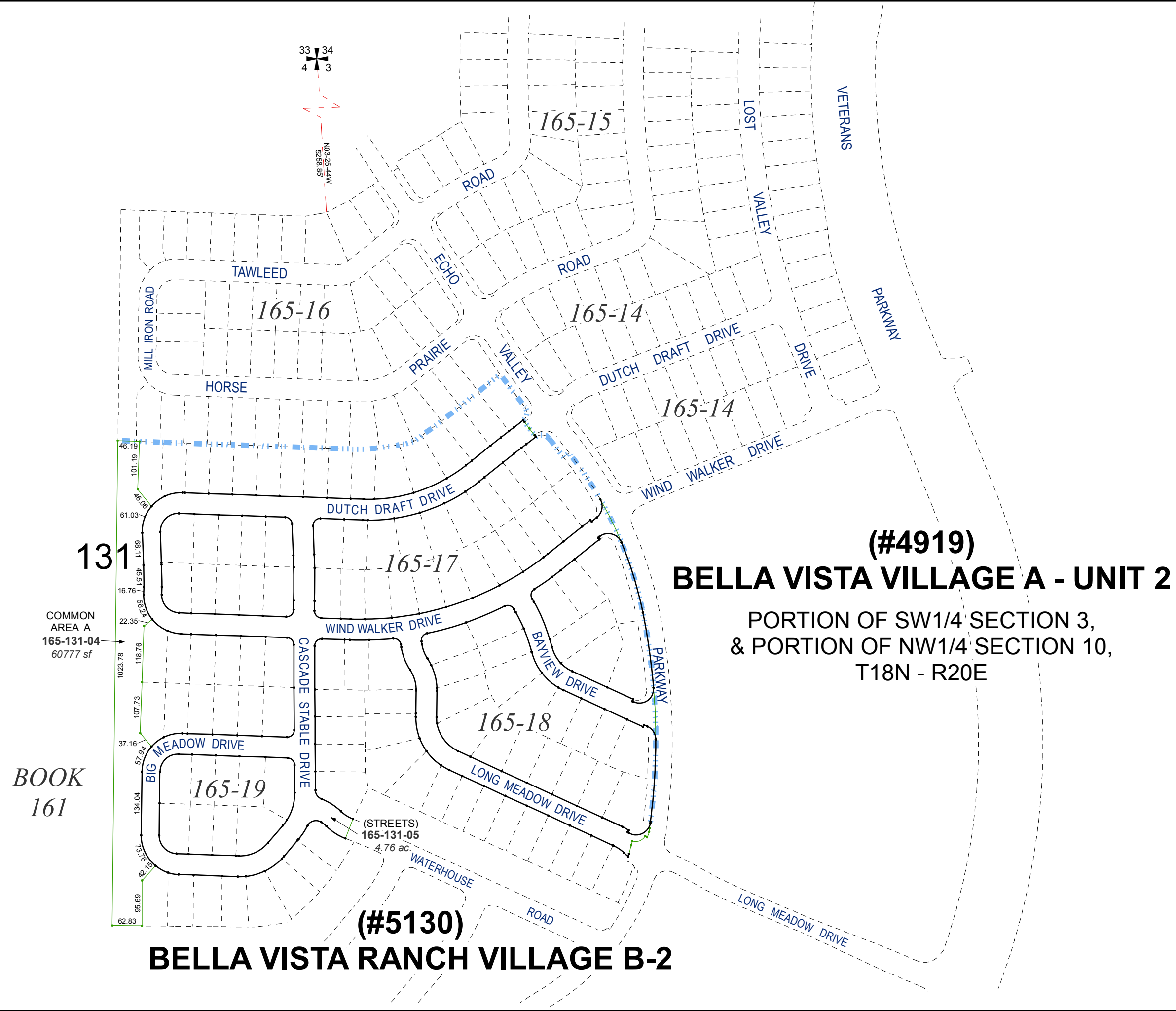
created by: NLH 06/26/2009

last updated: EMG 10/1/15 SR 3/30/17

area previously shown on map(s)

165-01

NOTE: This map was prepared for the use of the Washoe County Assessor for assessment and illustrative purposes only. It does not represent a survey of the premises. No liability is assumed as to the sufficiency or accuracy of the data delineated hereon.



131

COMMON AREA A
165-131-04
60777 sf

BOOK
161

(#5130)

BELLA VISTA RANCH VILLAGE B-2

(#4919)

BELLA VISTA VILLAGE A - UNIT 2

PORTION OF SW1/4 SECTION 3,
& PORTION OF NW1/4 SECTION 10,
T18N - R20E

(STREETS)
165-131-05
4.76 ac.