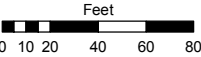
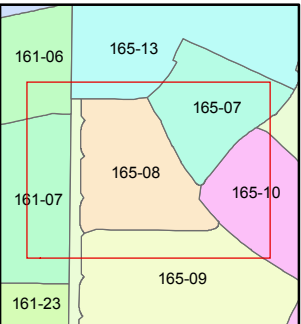
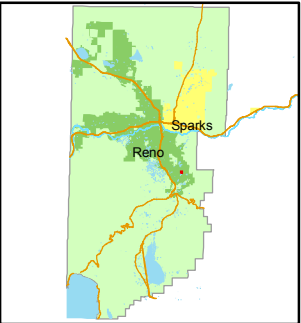


STATE OF NEVADA
WASHOE COUNTY
ASSESSOR'S OFFICE
Joshua G. Wilson, Assessor

1001 East Ninth Street
Building D
Reno, Nevada 89512
(775) 328-2231



1 inch = 80 feet



created by: NLH 7/07/2009

last updated: _____

area previously shown on map(s)

165-01

NOTE: This map was prepared for the use of the Washoe County Assessor for assessment and illustrative purposes only. It does not represent a survey of the premises. No liability is assumed as to the sufficiency or accuracy of the data delineated hereon.

165-13

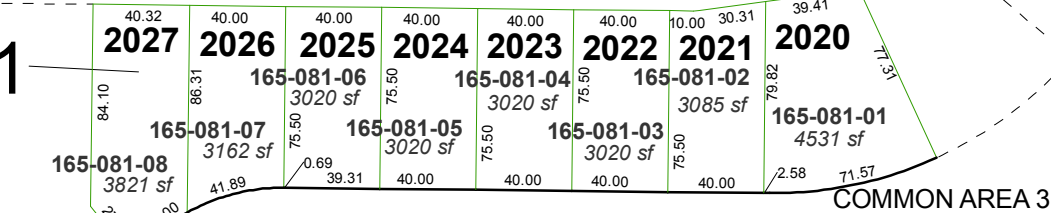
(#4792)

BELLA VISTA RANCH
VILLAGE B - UNIT 1

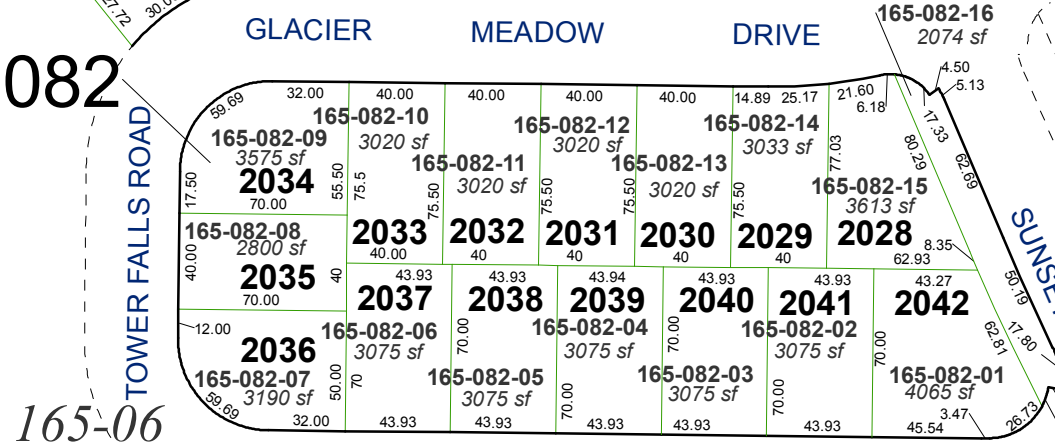
PORTION OF THE NW 1/4 OF SEC. 10

T18N - R20E

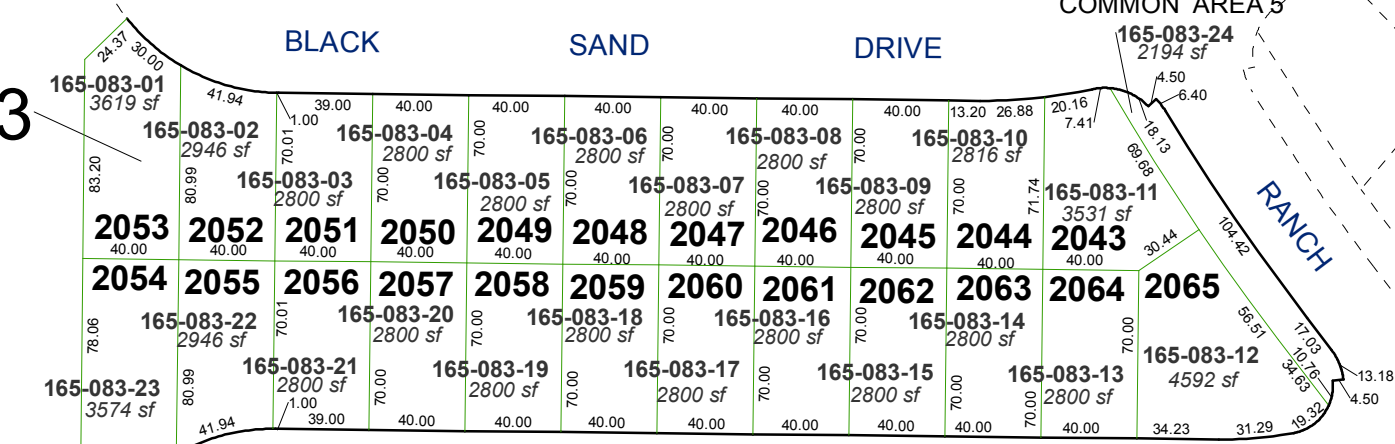
081



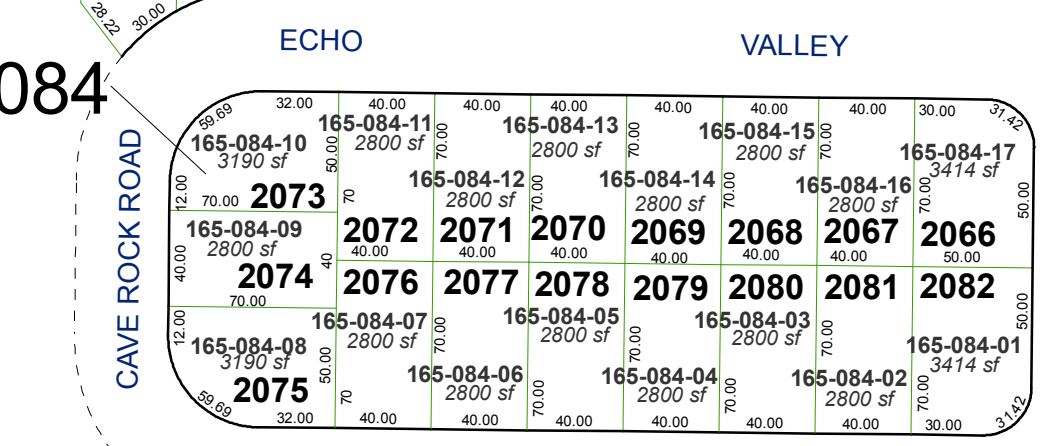
082



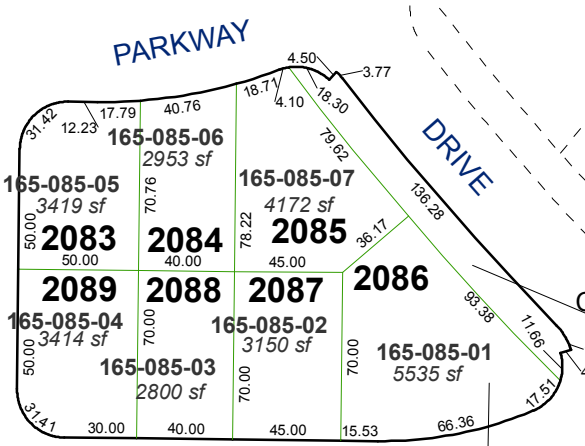
083



084



PAGE MEADOWS DRIVE



085

STREETS and COMMON AREA 13
PARCELED ON PAGE 165-06

BOOK 161