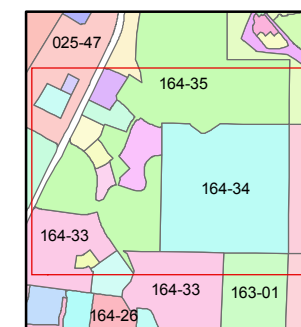
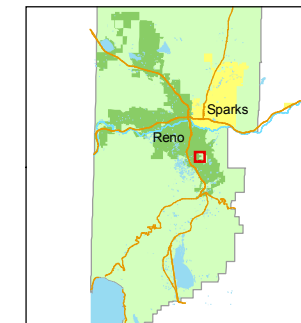


1 inch = 400 feet



created by: CFB 03/03/2010

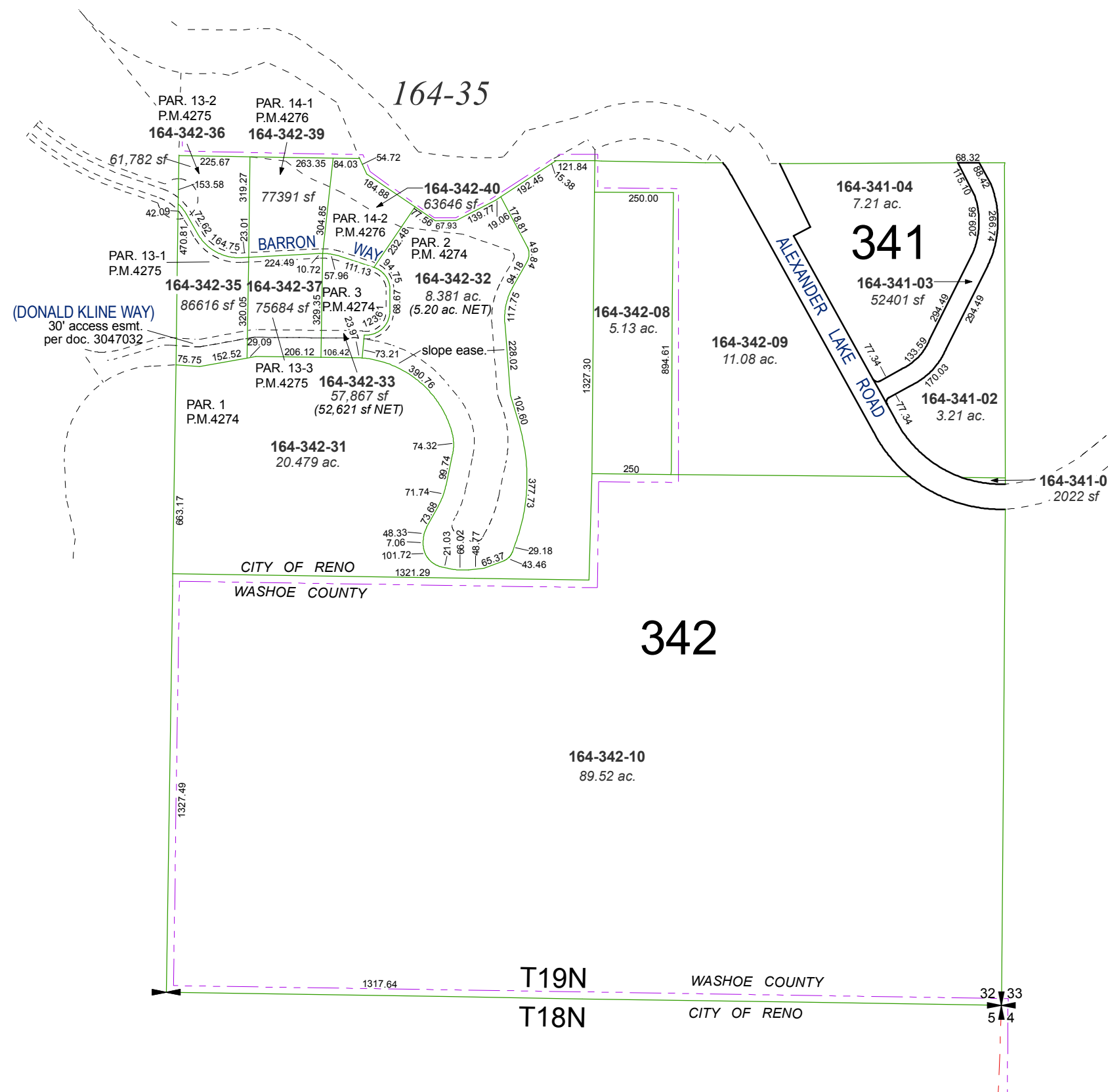
last updated: _____

area previously shown on map(s)

022-17

NOTE: This map was prepared for the use of the Washoe County Assessor for assessment and illustrative purposes only. It does not represent a survey of the premises. No liability is assumed as to the sufficiency or accuracy of the data delineated hereon.

PORTION OF SECTION 32, T19N - R20E



342

T19N
T18N

WASHOE COUNTY
CITY OF RENO

32
33
5
4