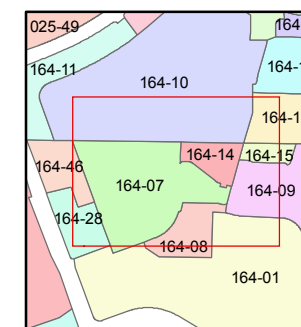
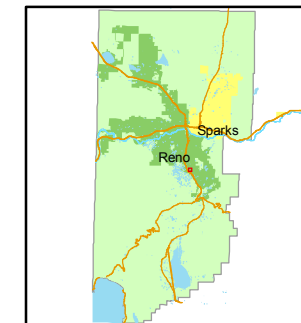


1 inch = 100 feet



created by: TWT 9/02/2009

last updated: NLH 9/21/2010

area previously shown on map(s)

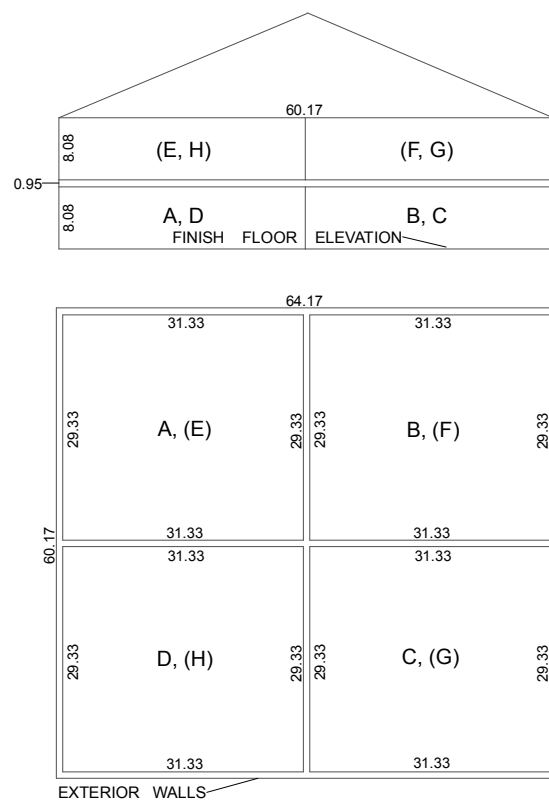
022-28

NOTE: This map was prepared for the use of the Washoe County Assessor for assessment and illustrative purposes only. It does not represent a survey of the premises. No liability is assumed as to the sufficiency or accuracy of the data delineated herein.

(#2126)
AMENDED WATERFORD PARK - UNIT 1
 A CONDOMINIUM

TO EACH UNIT A 1/32 ND. INTEREST IN COMMON AREA
 A POR. OF THE SE 1/4 OF SEC. 6
 T18N - R20E

TYPICAL 8-PLEX BUILDING UNIT
 - NOT TO SCALE -



NOTES:
 SEE PAGE 164-14-S1 FOR FIRST FLOOR UNITS
 SEE PAGE 164-14-S2 FOR SECOND FLOOR UNITS