

BOOK 043

BOOK 025

164-12

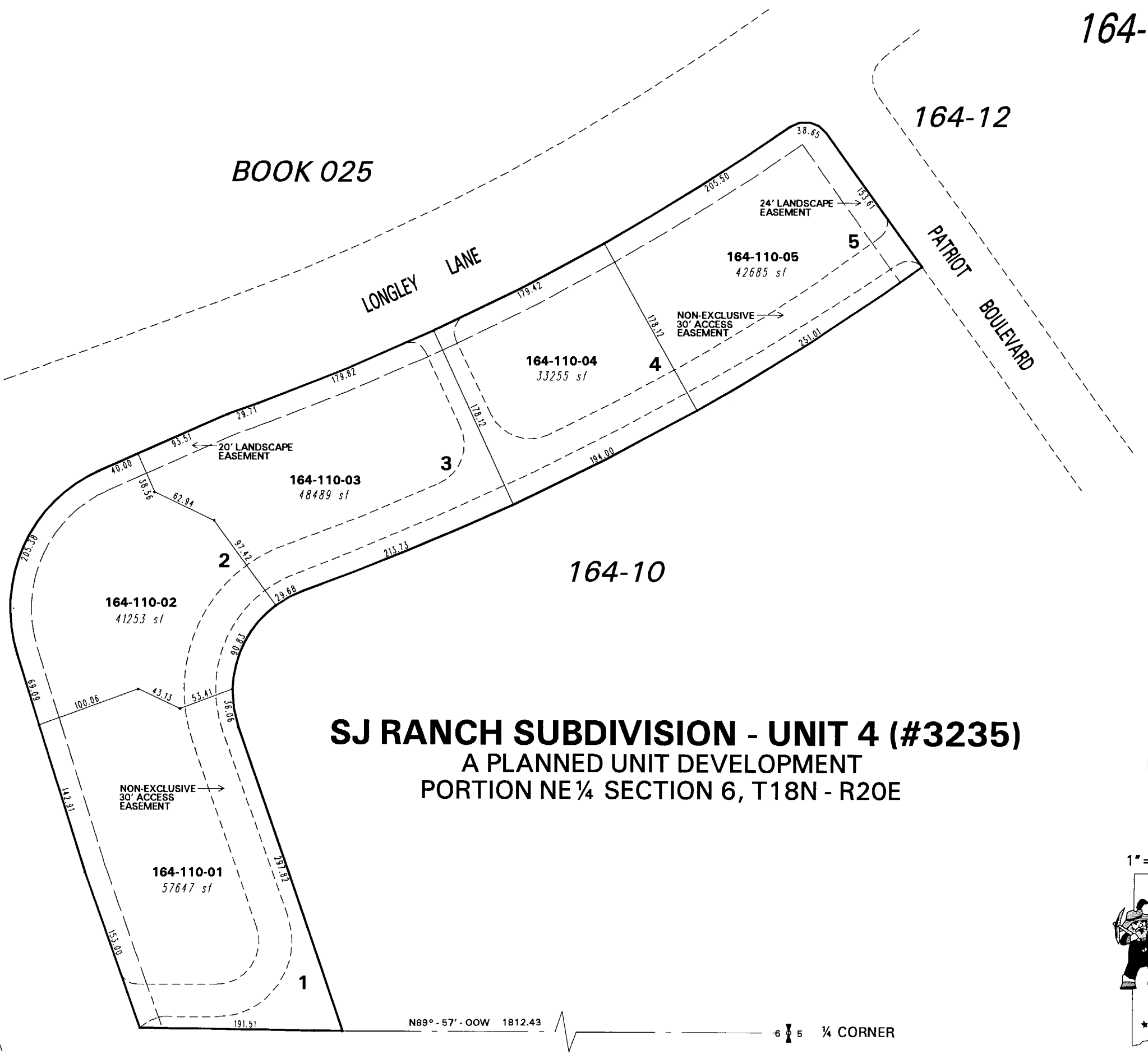
SOUTH VIRGINIA STREET

LONGLEY LANE

PATRIOT BOULEVARD

164-10

SJ RANCH SUBDIVISION - UNIT 4 (#3235) A PLANNED UNIT DEVELOPMENT PORTION NE 1/4 SECTION 6, T18N - R20E



164-46

N89° - 57' - 00W 1812.43 6 5 1/4 CORNER

NOTE: This map is prepared for the use of the Washoe County Assessor for assessment and illustrative purposes only. It does not represent a survey of the premises. No liability is assumed as to the sufficiency or the accuracy of the data delineated hereon.

Office of Washoe County Assessor, Nevada - Joshua G. Wilson

This area previously shown on 22-36

NOTE: Areas of parcels which are less than 2 acres are shown in square feet.

Drawn by	GZ/dsr	06/18/97
Revised	NLH	10/05/07

