

Assessor's Map Number

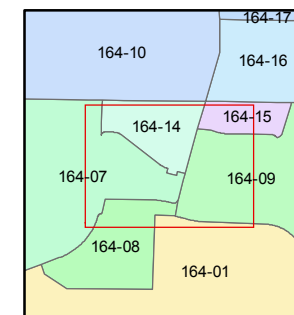
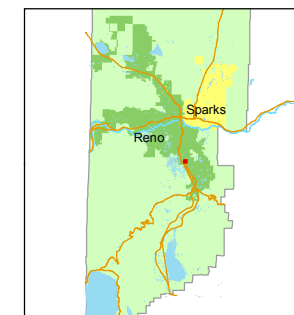
164-07-S3

STATE OF NEVADA
WASHOE COUNTY
ASSESSOR'S OFFICE
Michael E. Clark, Assessor

1001 East Ninth Street
Building D
Reno, Nevada 89512
(775) 328-2231



1 inch = 50 feet



created by: TWT 9/2/2009

last updated: TWT 7/6/2015

area previously shown on map(s)

022-20-S4

NOTE: This map was prepared for the use of the Washoe County Assessor for assessment and illustrative purposes only. It does not represent a survey of the premises. No liability is assumed as to the sufficiency or accuracy of the data delineated hereon.

BLVD.

PATRIOT

PORTMAN AVENUE

KINGSTON

074

B

LANE

DRIVE

BLUESTONE

#2209 WATERFORD PARK UNIT 2

A CONDOMINIUM PROJECT 2ND FLOOR

ENTIRE CONDOMINIUM SHOWN ON PGS. 164-06, 07, 08 & 09

