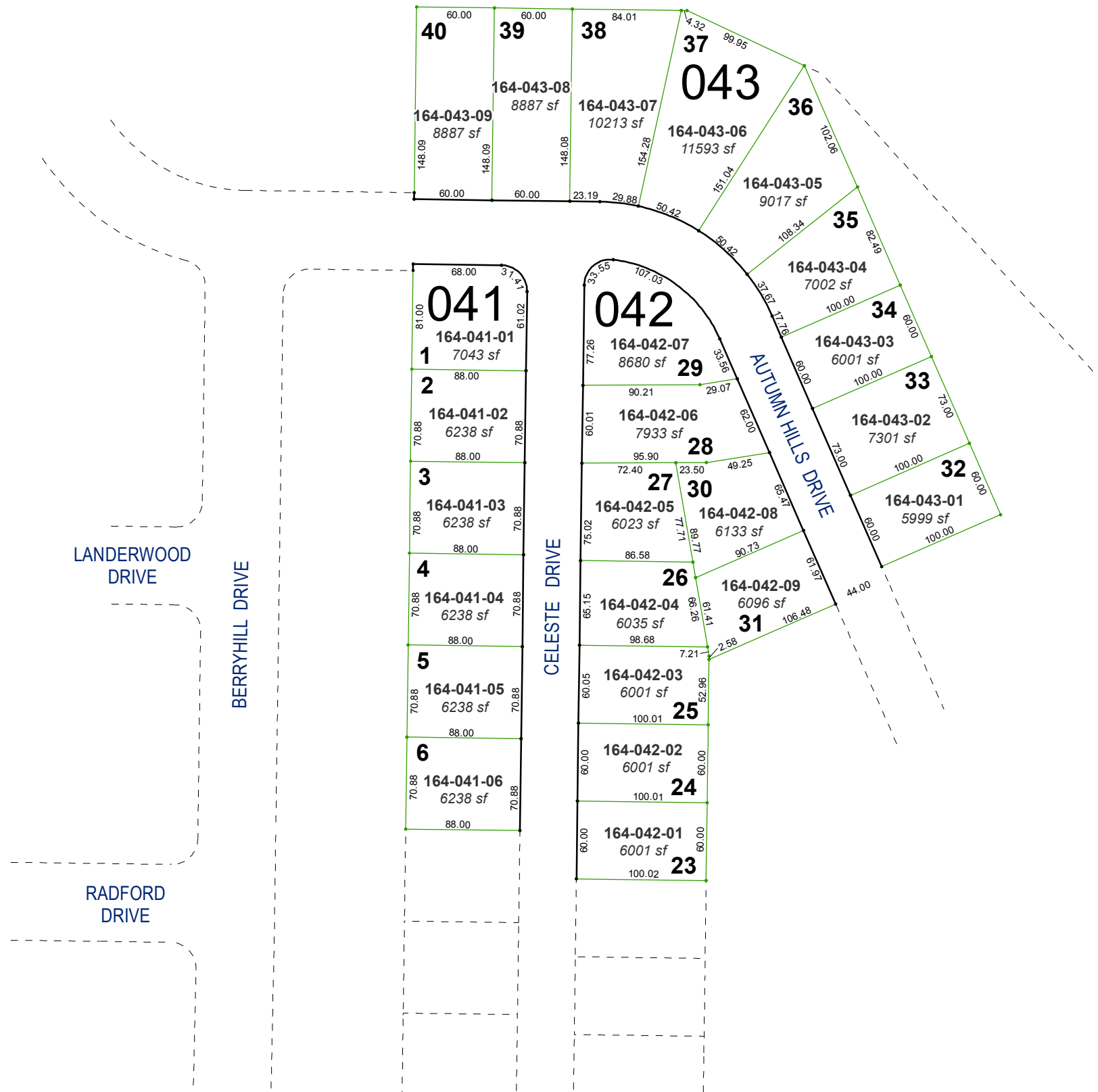
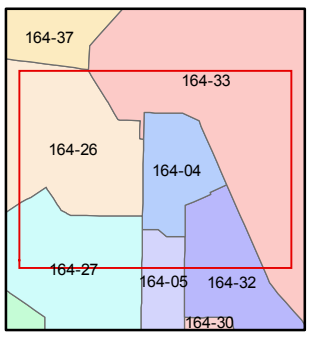
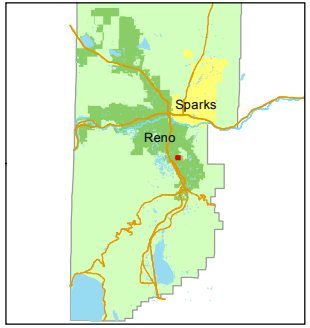
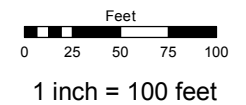


(#3373)
HUFFAKER VILLAGE - UNIT 1
 PORTION OF THE NORTH ½ SECTION 5
 T18N - R20E



Assessor's Map Number
164-04

STATE OF NEVADA
WASHOE COUNTY
 ASSESSOR'S OFFICE
 Michael E. Clark, Assessor
 1001 East Ninth Street
 Building D
 Reno, Nevada 89512
 (775) 328-2231



created by: EMG 4/14/2016
 last updated: _____
 area previously shown on map(s)
022-37

NOTE: This map was prepared for the use of the Washoe County Assessor for assessment and illustrative purposes only. It does not represent a survey of the premises. No liability is assumed as to the sufficiency or accuracy of the data delineated hereon.