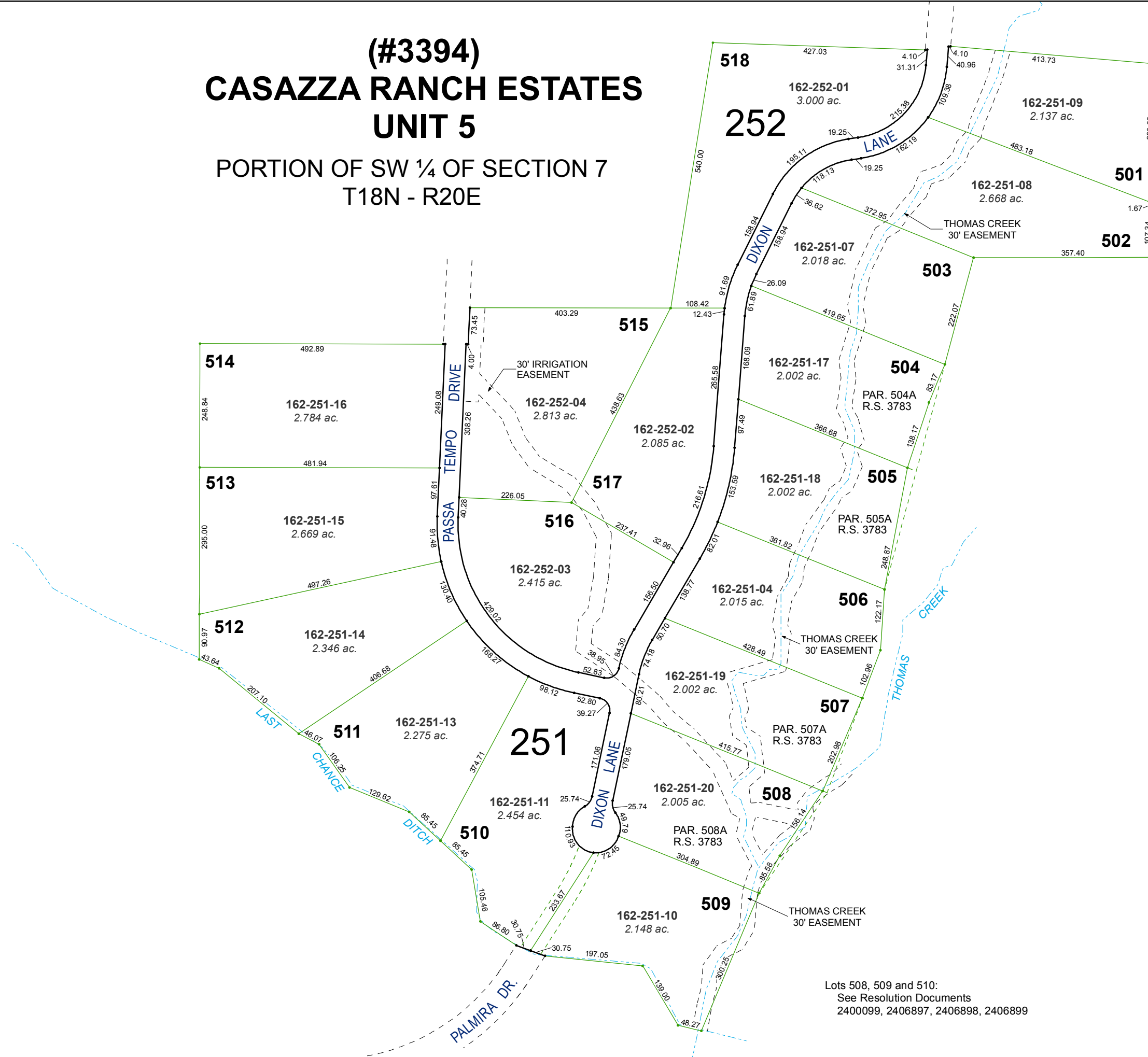


**(#3394)
CASAZZA RANCH ESTATES
UNIT 5**

PORTION OF SW ¼ OF SECTION 7
T18N - R20E

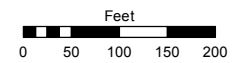


Lots 508, 509 and 510:
See Resolution Documents
2400099, 2406897, 2406898, 2406899

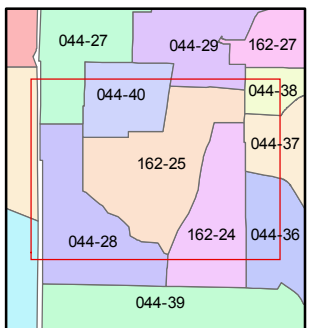
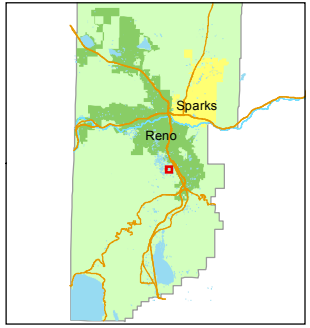
Assessor's Map Number
162-25

STATE OF NEVADA
WASHOE COUNTY
ASSESSOR'S OFFICE
Michael E. Clark, Assessor

1001 East Ninth Street
Building D
Reno, Nevada 89512
(775) 328-2231



1 inch = 200 feet



created by: EMG 7/27/2016

last updated: _____

area previously shown on map(s)
044-17

NOTE: This map was prepared for the use of the Washoe County Assessor for assessment and illustrative purposes only. It does not represent a survey of the premises. No liability is assumed as to the sufficiency or accuracy of the data delineated hereon.