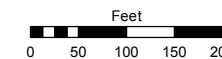
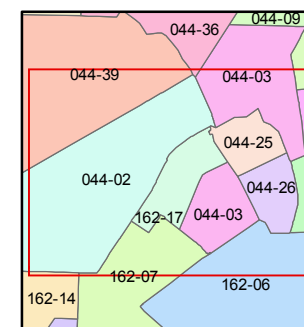
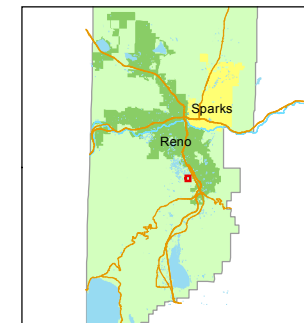


STATE OF NEVADA
WASHOE COUNTY
ASSESSOR'S OFFICE
Michael E. Clark, Assessor

1001 East Ninth Street
Building D
Reno, Nevada 89512
(775) 328-2231



1 inch = 200 feet



created by: EMG 7/27/2016

last updated: _____

area previously shown on map(s)

044-04, 044-05

NOTE: This map was prepared for the use of the Washoe County Assessor for assessment and illustrative purposes only. It does not represent a survey of the premises. No liability is assumed as to the sufficiency or accuracy of the data delineated hereon.

(#1620)
GEORGIA ESTATES
PORTION OF NE ¼ SEC. 18
T18N - R20E

(#1308)
SUNNY ACRES
UNIT 1



Parcel ID	Acreage
162-171-01	0.990 ac.
162-171-02	1.010 ac.
162-171-03	1.000 ac.
162-171-04	0.950 ac.
162-171-05	1.080 ac.
162-172-01	0.990 ac.
162-172-02	1.000 ac.
162-172-03	0.850 ac.
162-172-04	1.050 ac.