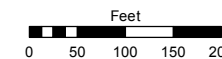
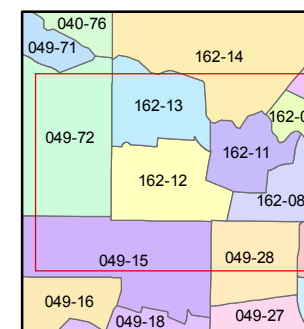
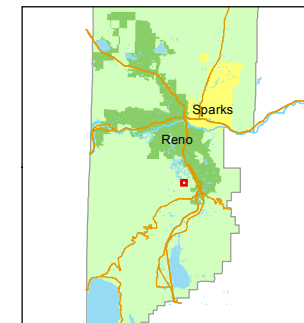


STATE OF NEVADA
WASHOE COUNTY
ASSESSOR'S OFFICE
Michael E. Clark, Assessor

1001 East Ninth Street
Building D
Reno, Nevada 89512
(775) 328-2231



1 inch = 200 feet



created by: EMG 7/22/2016

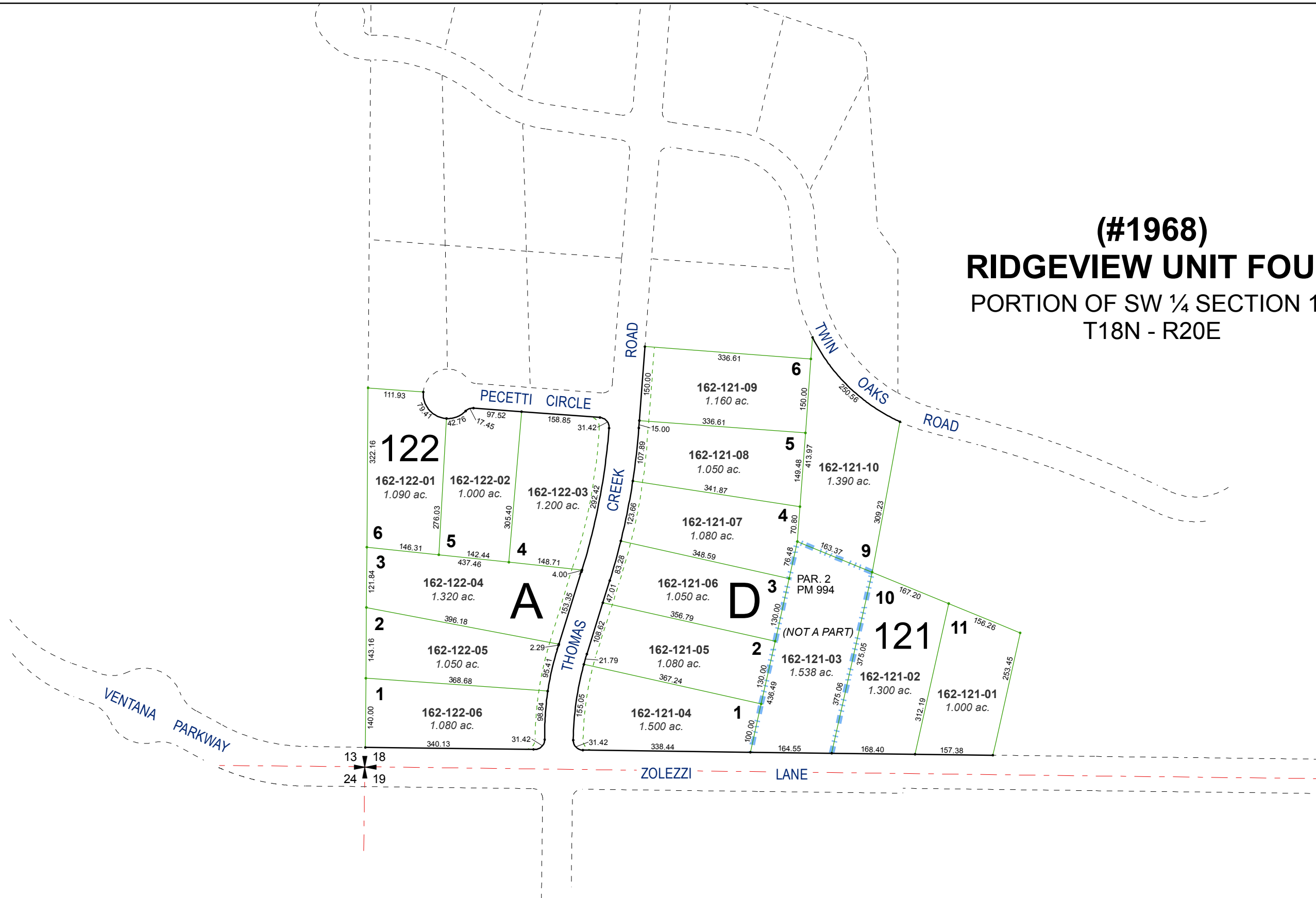
last updated: _____

area previously shown on map(s)

044-23

NOTE: This map was prepared for the use of the Washoe County Assessor for assessment and illustrative purposes only. It does not represent a survey of the premises. No liability is assumed as to the sufficiency or accuracy of the data delineated hereon.

(#1968)
RIDGEVIEW UNIT FOUR
PORTION OF SW ¼ SECTION 18
T18N - R20E



13 18
24 19