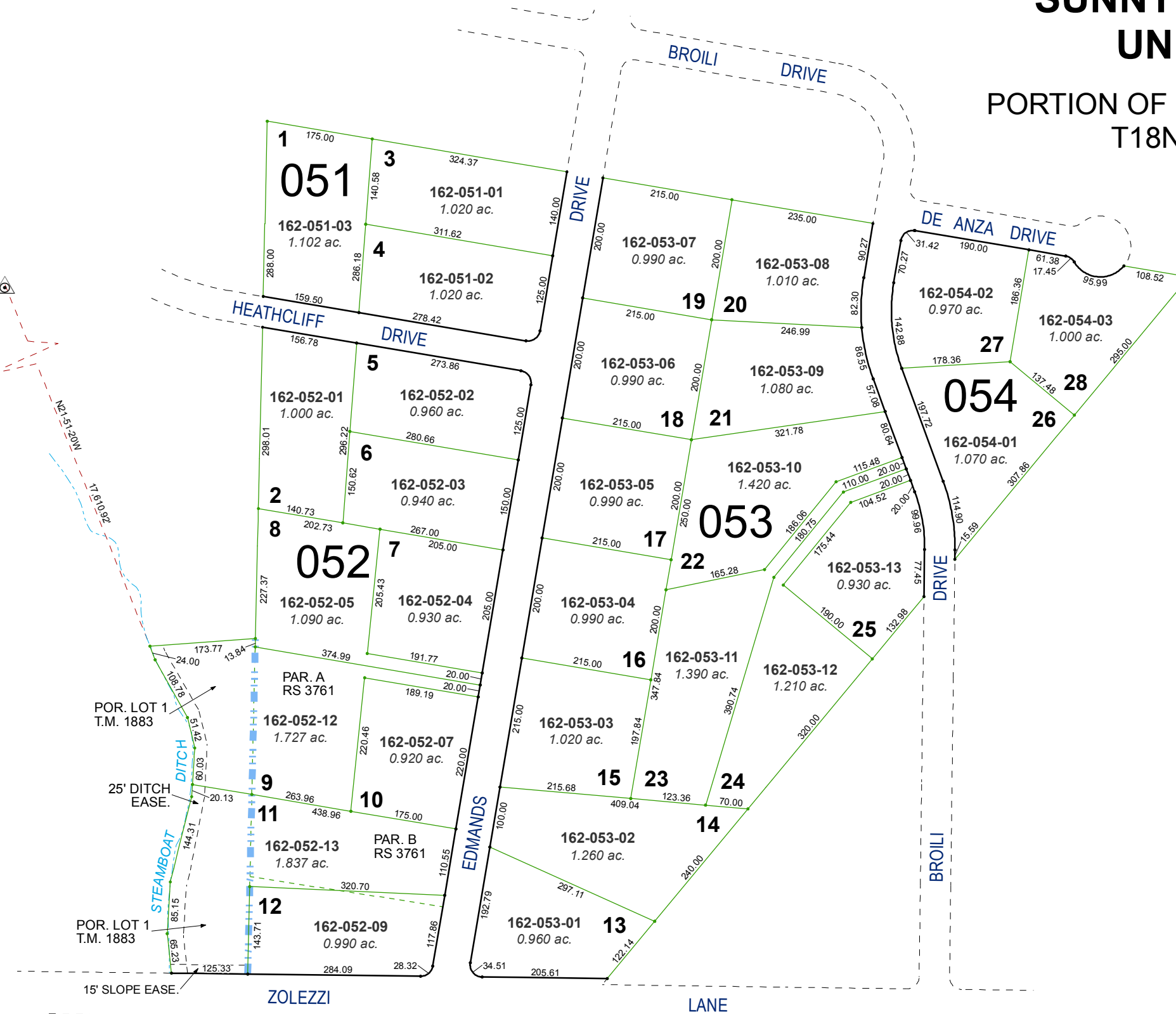


(#1636) SUNNY ACRES UNIT 2

PORTION OF S 1/2 SECTION 18
T18N - R20E

GPS-9 (908)
N=14,845,158.990
E= 2,280,172.756

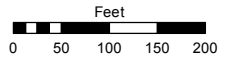


Assessor's Map Number

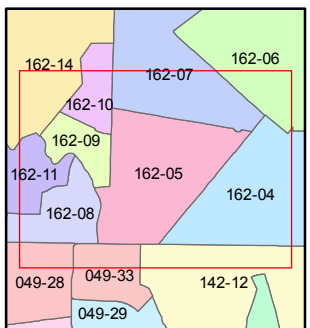
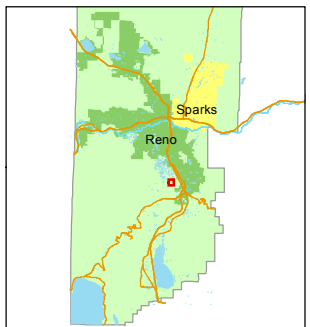
162-05

STATE OF NEVADA
WASHOE COUNTY
ASSESSOR'S OFFICE
Michael E. Clark, Assessor

1001 East Ninth Street
Building D
Reno, Nevada 89512
(775) 328-2231



1 inch = 200 feet



created by: EMG 7/21/2016

last updated: _____

area previously shown on map(s)

044-07

NOTE: This map was prepared for the use of the Washoe County Assessor for assessment and illustrative purposes only. It does not represent a survey of the premises. No liability is assumed as to the sufficiency or accuracy of the data delineated hereon.