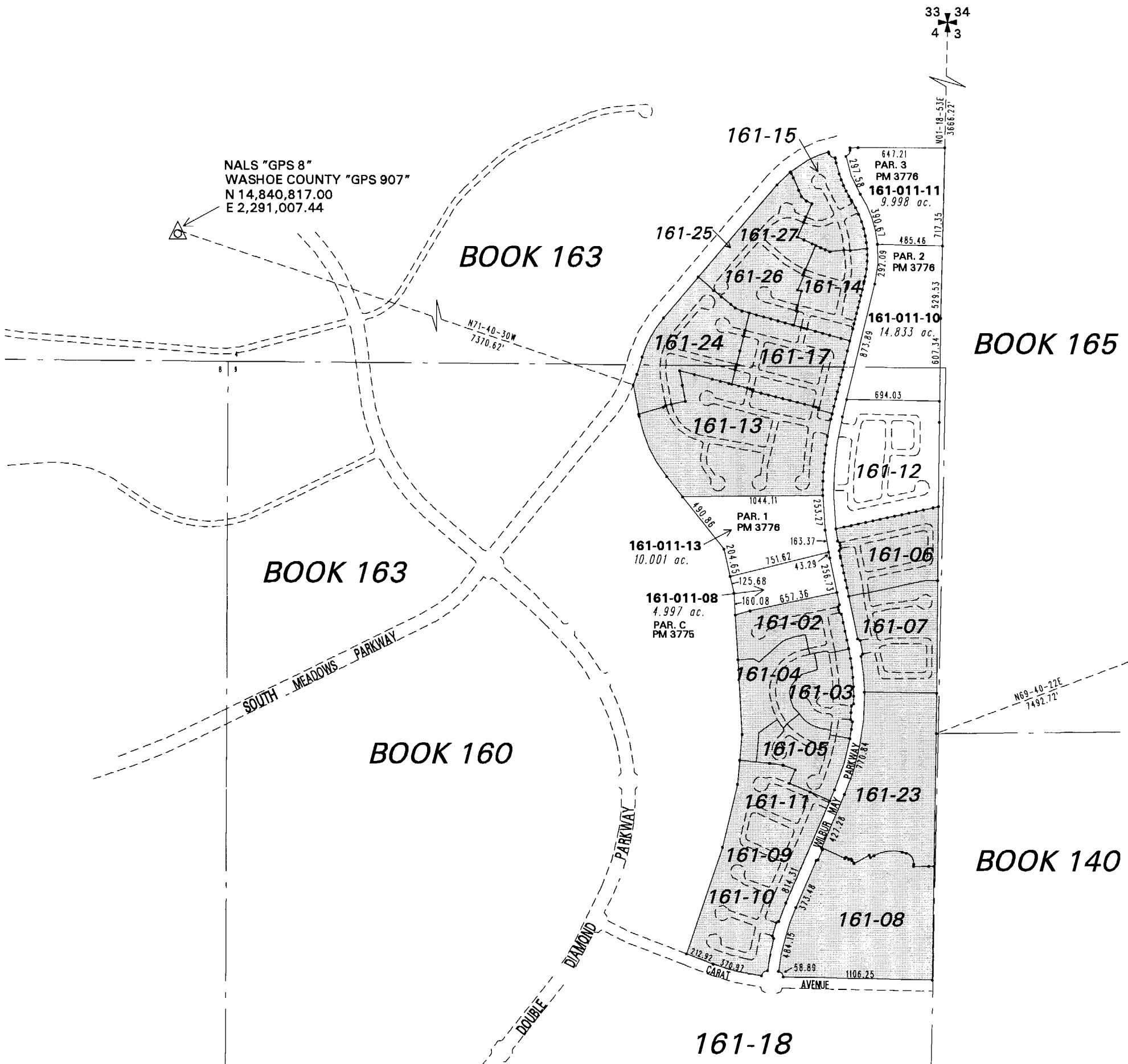


**(#3774)
DOUBLE DIAMOND RANCH
PORTION OF SECTIONS 4 & 9
T18N - R20E**



NALS "GPS 8"
WASHOE COUNTY "GPS 907"
N 14,840,817.00
E 2,291,007.44

"TRUCKEE"
WASHOE COUNTY "GPS 802"
N 14,838,560.79
E 2,307,288.97

NOTE: This map is prepared for the use of the Washoe County Assessor for assessment and illustrative purposes only. It does not represent a survey of the premises. No liability is assumed as to the sufficiency or the accuracy of the data delineated hereon.

Office of Washoe County Assessor, Nevada - Joshua G. Wilson

This area previously shown on 160-39

NOTE: Areas of parcels which are less than 2 acres are shown in square feet.

Drawn by HCS 6/6/01
Revised HCS 7/25/03* CFB 03/09/3006
PK 4/15/06 JL 3/27/07, 6/13/07