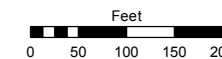


(#5174) MONTE VISTA AT THE ESTATES AT MOUNT ROSE

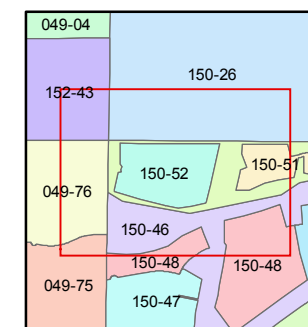
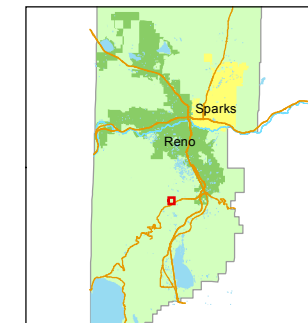
A COMMON INTEREST COMMUNITY
POR. OF NORTH 1/2 SECTION 35
T18N - R19E

STATE OF NEVADA
WASHOE COUNTY
ASSESSOR'S OFFICE
Michael E. Clark, Assessor

1001 East Ninth Street
Building D
Reno, Nevada 89512
(775) 328-2231



1 inch = 200 feet

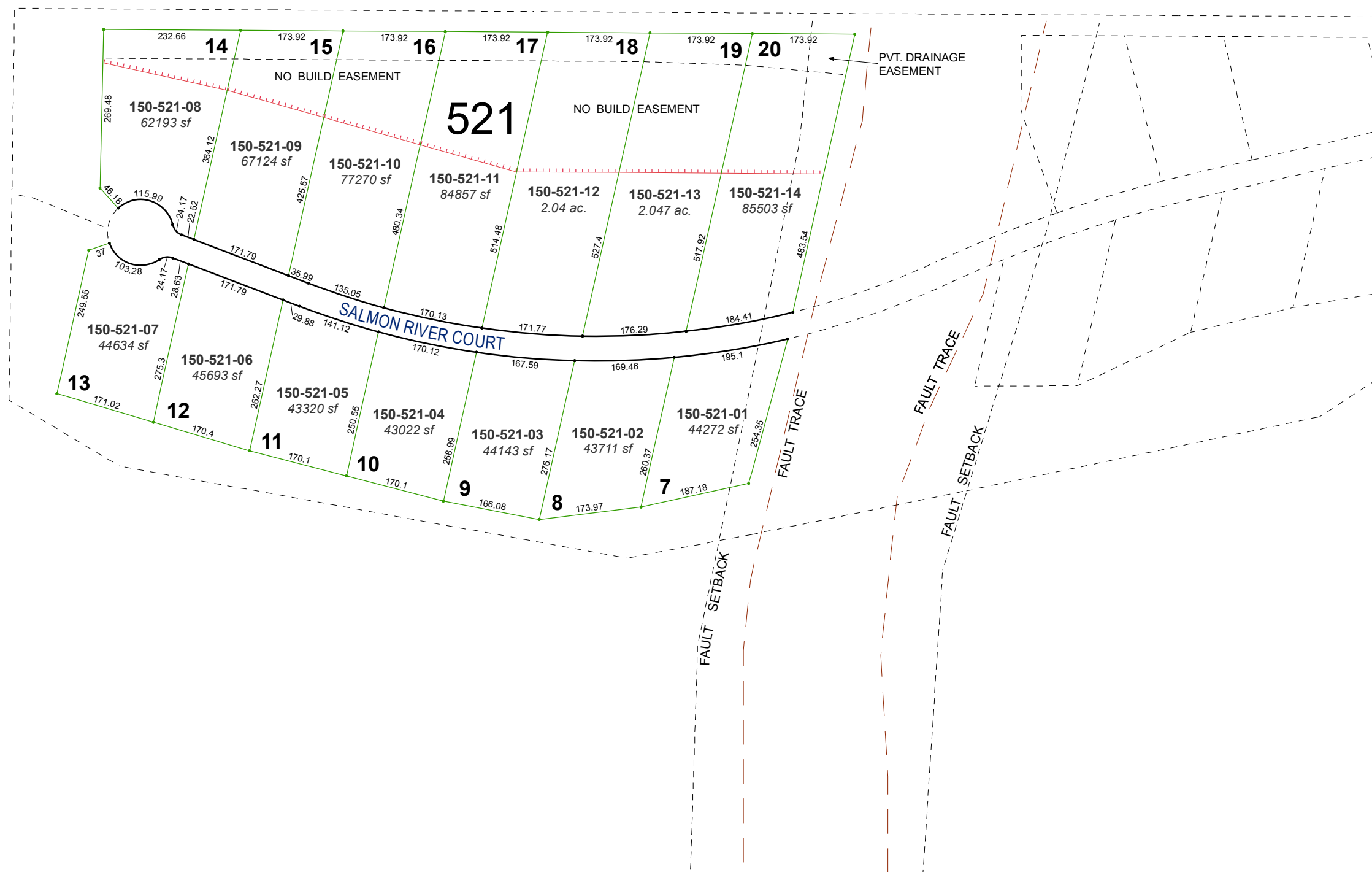


created by: EMG 9/6/2016

last updated: _____

area previously shown on map(s)

150-46



NOTE: This map was prepared for the use of the Washoe County Assessor for assessment and illustrative purposes only. It does not represent a survey of the premises. No liability is assumed as to the sufficiency or accuracy of the data delineated hereon.