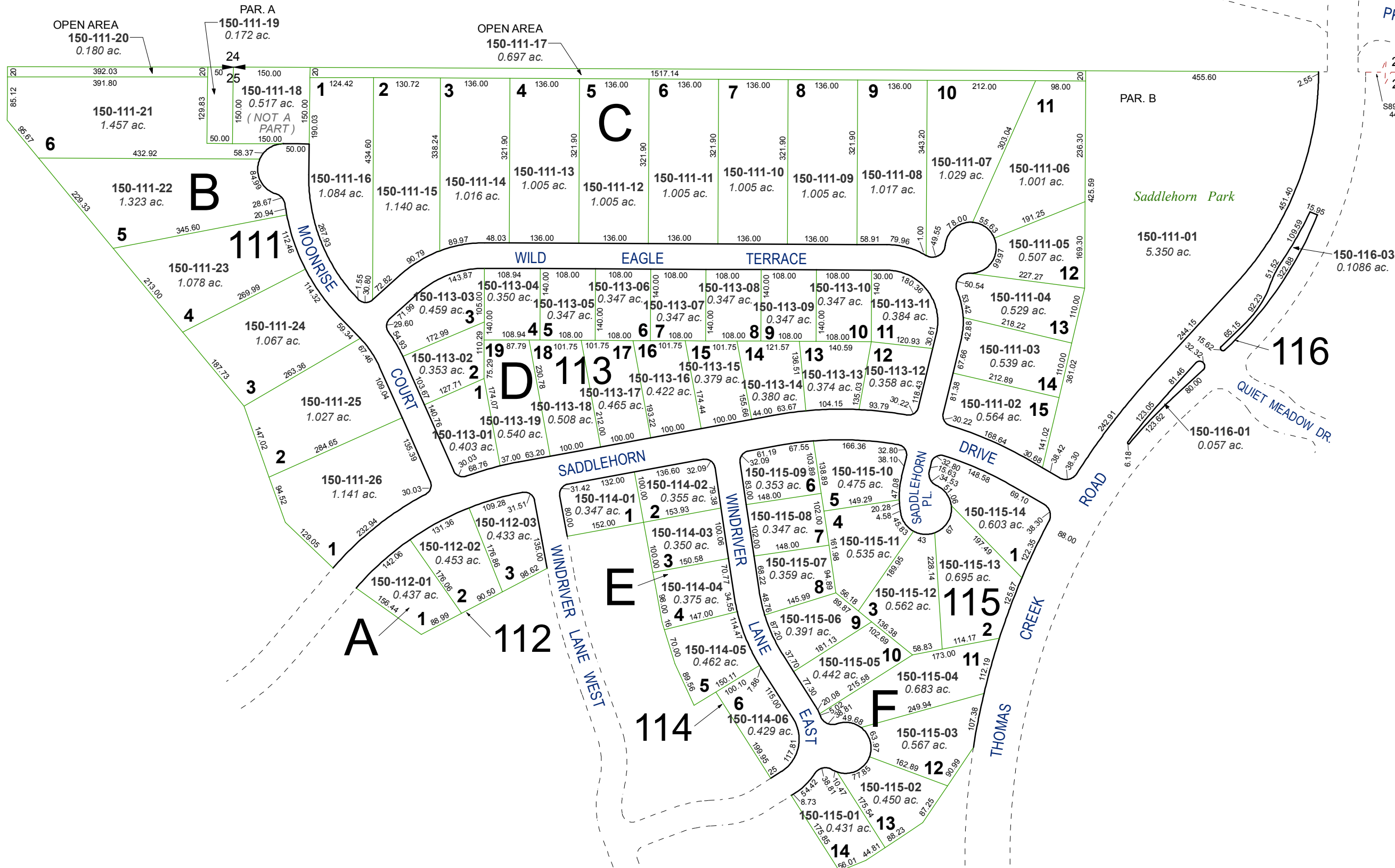


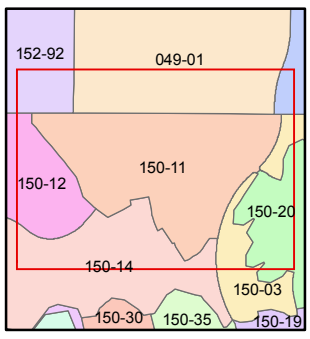
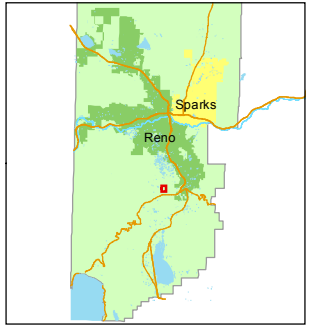
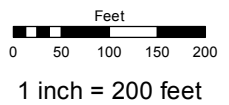
(#2576) SADDLEHORN SUBDIVISION UNIT 1 POR. N 1/2 SECTION 25, T18N - R19E



Assessor's Map Number
150-11

STATE OF NEVADA
WASHOE COUNTY
ASSESSOR'S OFFICE
Joshua G. Wilson, Assessor

1001 East Ninth Street
Building D
Reno, Nevada 89512
(775) 328-2231



created by: KSB 11/09/11
last updated: _____
area previously shown on map(s)
049-20

NOTE: This map was prepared for the use of the Washoe County Assessor for assessment and illustrative purposes only. It does not represent a survey of the premises. No liability is assumed as to the sufficiency or accuracy of the data delineated hereon.