

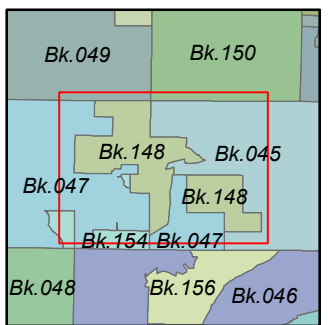
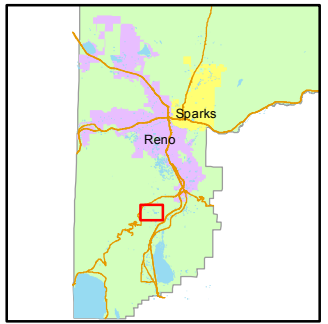
STATE OF NEVADA
**WASHOE COUNTY
ASSESSOR'S OFFICE**
Michael E. Clark, Assessor

1001 East Ninth Street
Building D
Reno, Nevada 89512
(775) 328-2231



Feet
0 500 1,000

1 inch = 1,000 feet

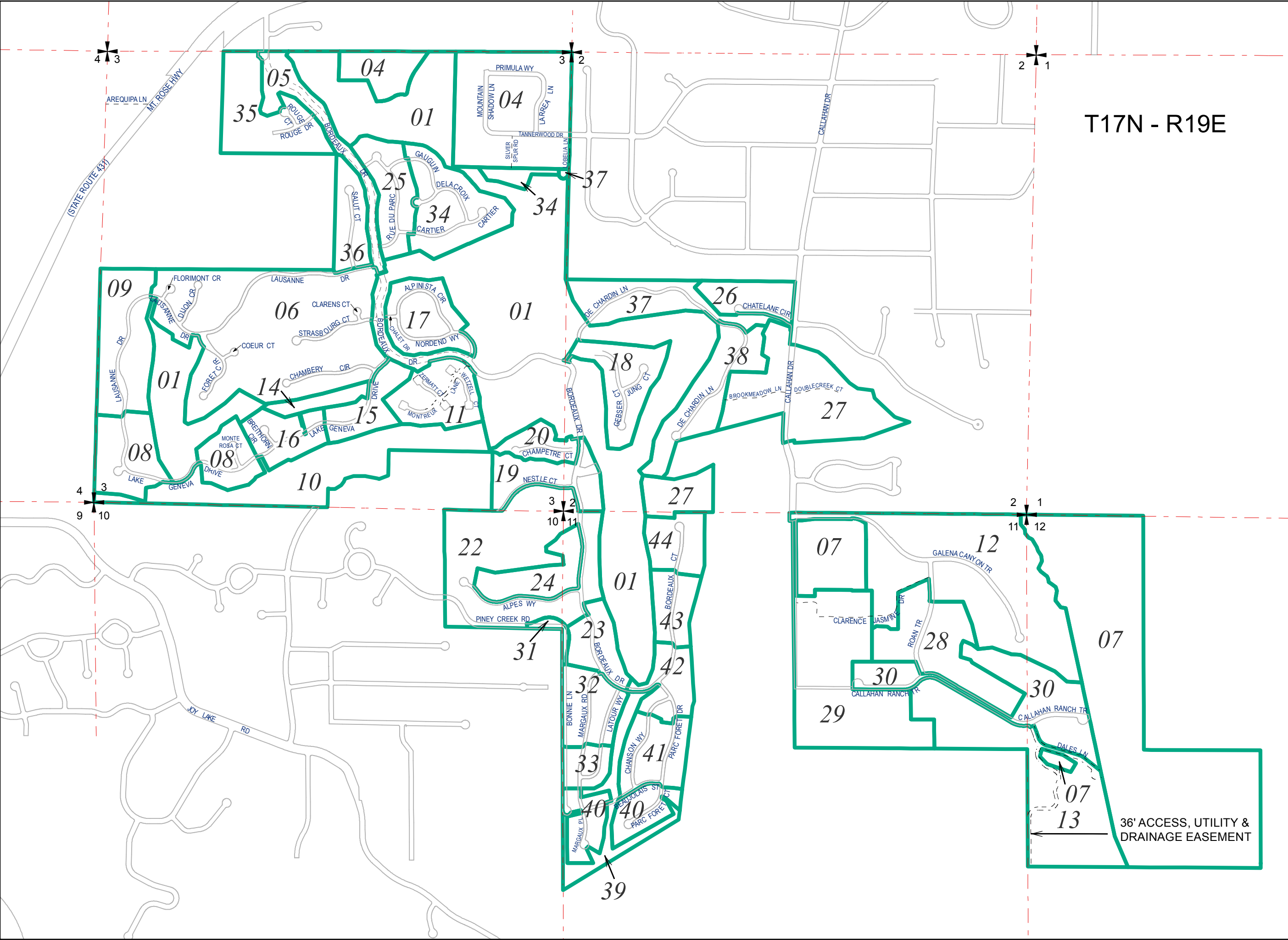


created by: EMG 5/15/2015

last updated: JMO 6/28/17

NOTE: This map was prepared for the use of the Washoe County Assessor for assessment and illustrative purposes only. It does not represent a survey of the premises. No liability is assumed as to the sufficiency or accuracy of the data delineated herein.

T17N - R19E



36' ACCESS, UTILITY & DRAINAGE EASEMENT