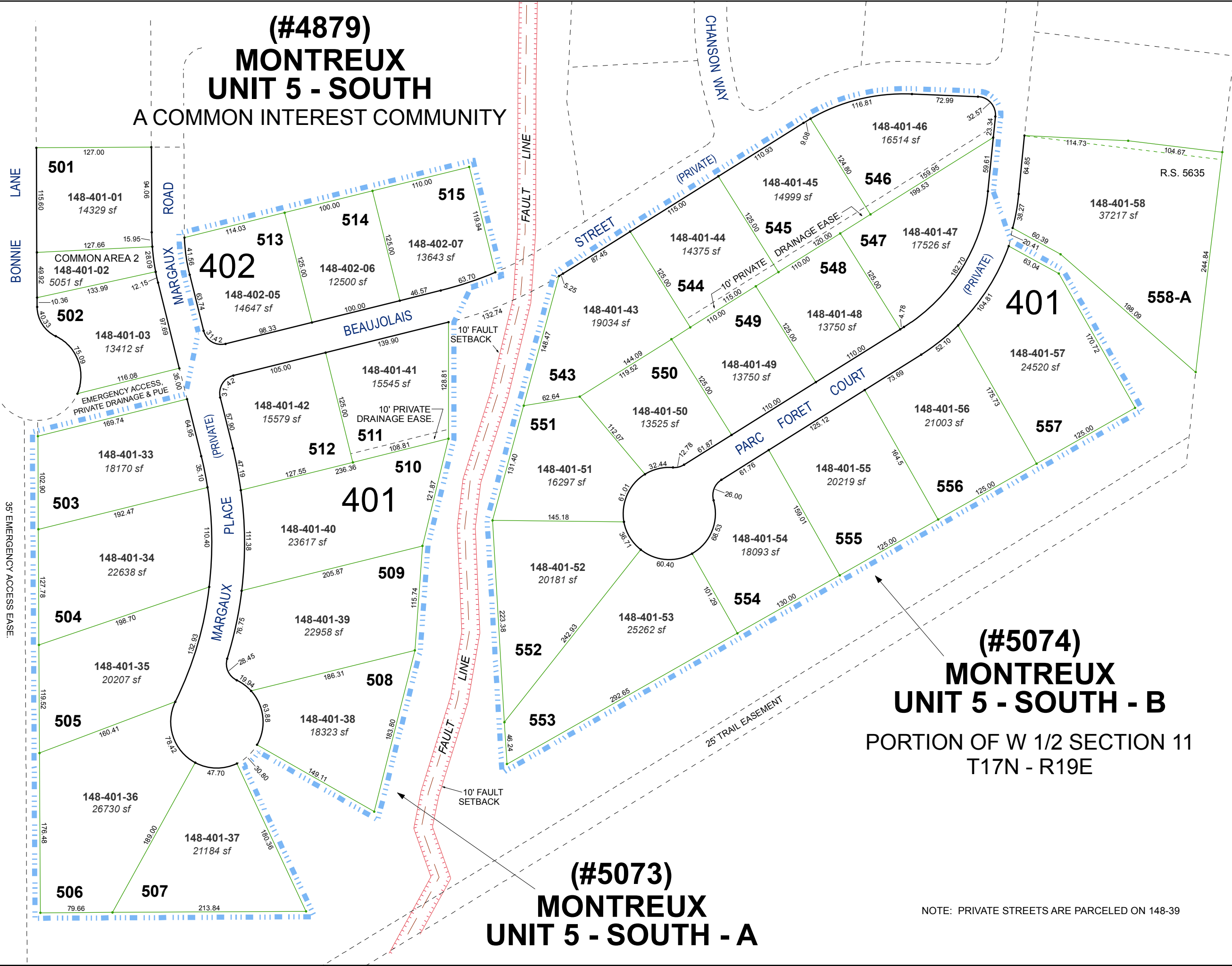


**(#4879)
MONTREUX
UNIT 5 - SOUTH**
A COMMON INTEREST COMMUNITY



**(#5073)
MONTREUX
UNIT 5 - SOUTH - A**

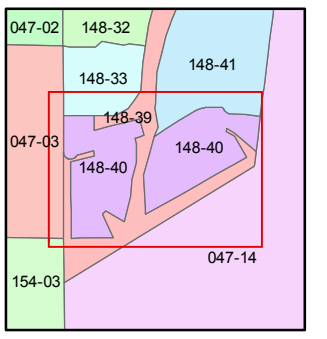
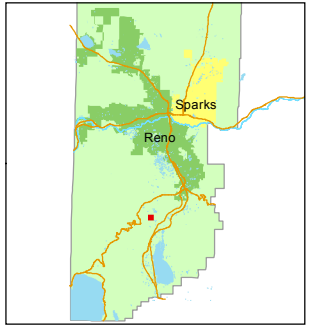
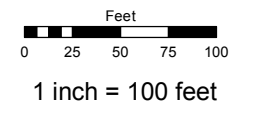
**(#5074)
MONTREUX
UNIT 5 - SOUTH - B**
PORTION OF W 1/2 SECTION 11
T17N - R19E

NOTE: PRIVATE STREETS ARE PARCELED ON 148-39

Assessor's Map Number
148-40

STATE OF NEVADA
WASHOE COUNTY
ASSESSOR'S OFFICE
Michael E. Clark, Assessor

1001 East Ninth Street
Building D
Reno, Nevada 89512
(775) 328-2231



created by: KSB 4/15/2014
last updated: EMG 3/20/15 EMG 5/15/15

area previously shown on map(s)
148-31

NOTE: This map was prepared for the use of the Washoe County Assessor for assessment and illustrative purposes only. It does not represent a survey of the premises. No liability is assumed as to the sufficiency or accuracy of the data delineated hereon.