

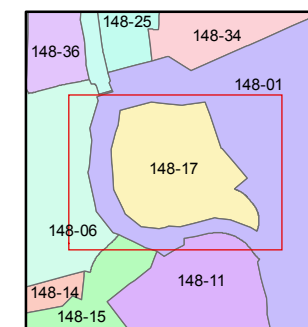
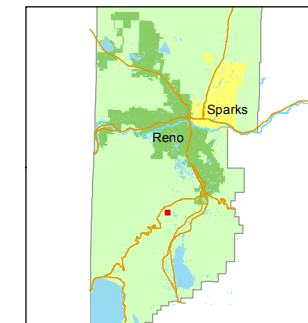
(#4643) MONTREUX - UNIT 10 A COMMON INTEREST COMMUNITY PORTION OF SECTIONS 2 & 3 T17N - R19E

STATE OF NEVADA
WASHOE COUNTY
ASSESSOR'S OFFICE
Michael E. Clark, Assessor

1001 East Ninth Street
Building D
Reno, Nevada 89512
(775) 328-2231



1 inch = 100 feet



NOTE: Streets & Common Area are parceled on Page 148-01



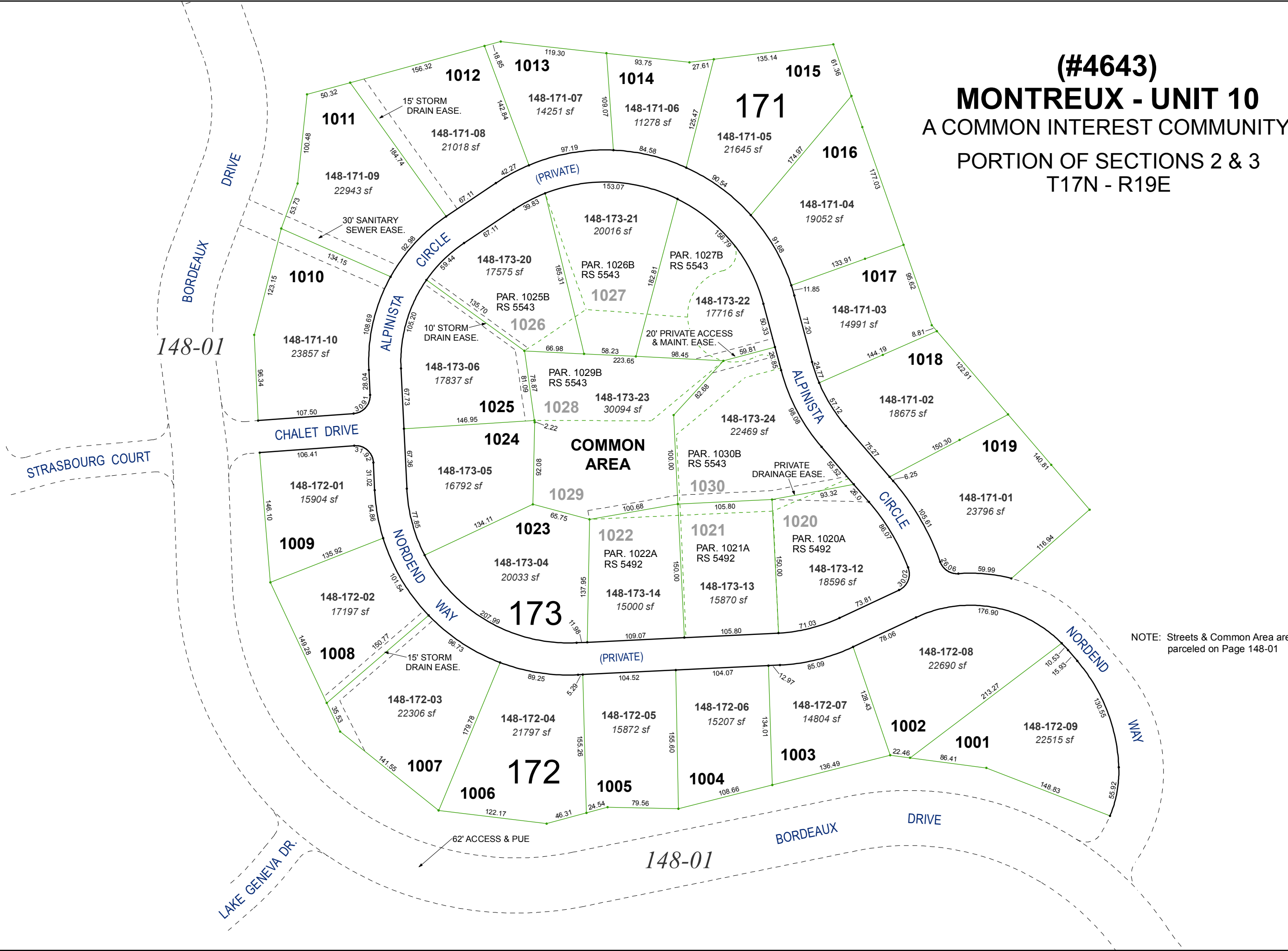
created by: KSB 6/19/2013

last updated: KSB 6/19/2013 CFB 4/16/205

area previously shown on map(s)

148-01

NOTE: This map was prepared for the use of the Washoe County Assessor for assessment and illustrative purposes only. It does not represent a survey of the premises. No liability is assumed as to the sufficiency or accuracy of the data delineated hereon.



148-01

148-01