

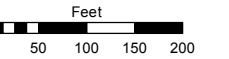
PORTION NE 1/4 SECTION 3, T17N - R19E

Assessor's Map Number

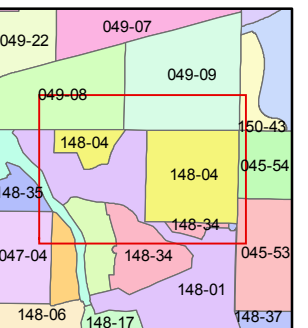
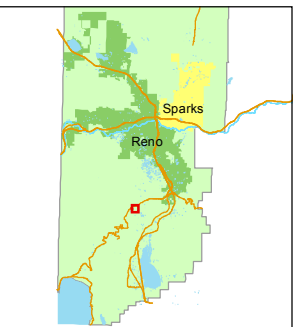
148-04

STATE OF NEVADA
WASHOE COUNTY
ASSESSOR'S OFFICE
 Joshua G. Wilson, Assessor

1001 East Ninth Street
 Building D
 Reno, Nevada 89512
 (775) 328-2231



1 inch = 200 feet



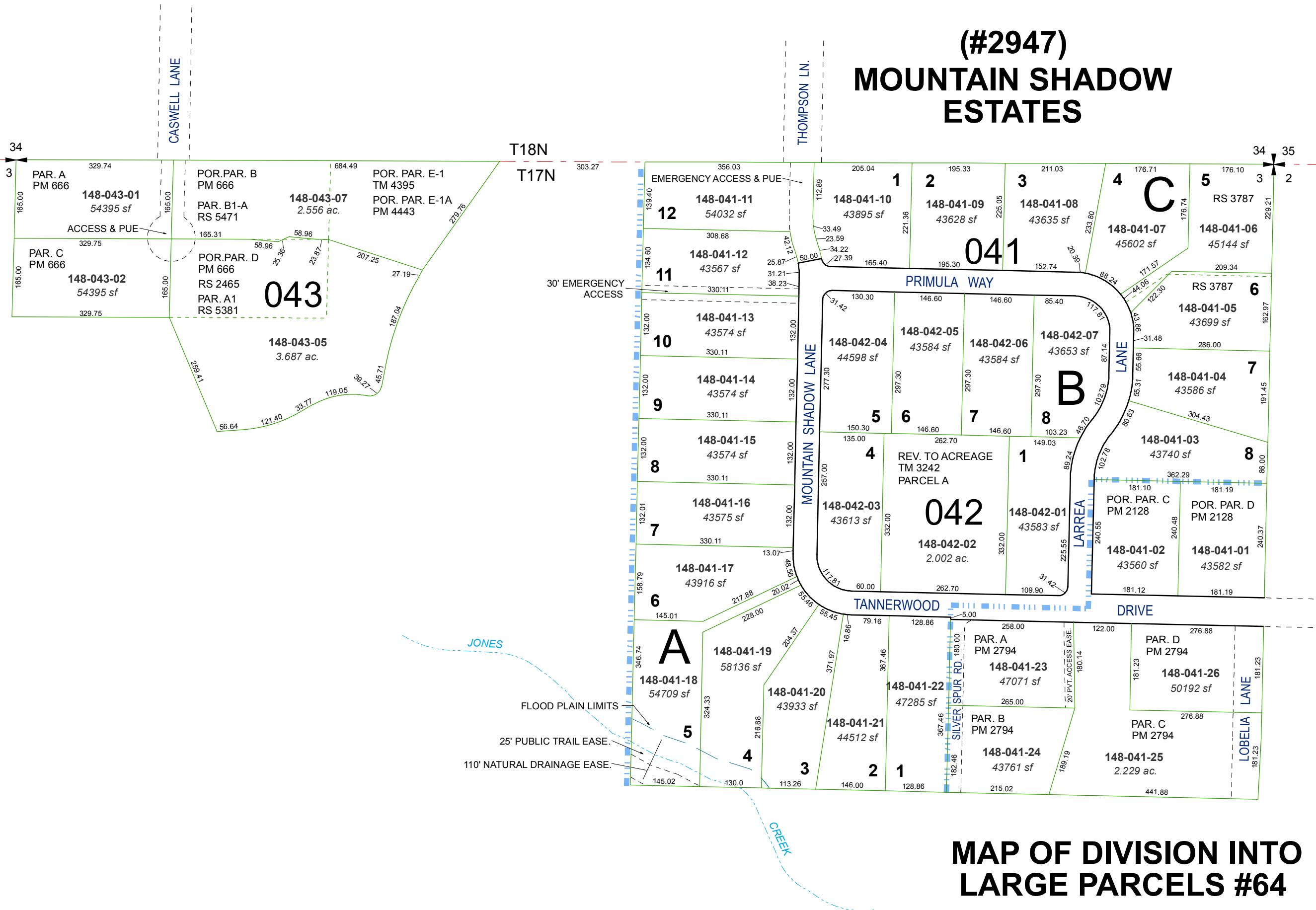
created by: KSB 2/17/2012

last updated: KSB 4/10/13

area previously shown on map(s)
047-18

NOTE: This map was prepared for the use of the Washoe County Assessor for assessment and illustrative purposes only. It does not represent a survey of the premises. No liability is assumed as to the sufficiency or accuracy of the data delineated hereon.

(#2947)
MOUNTAIN SHADOW
ESTATES



MAP OF DIVISION INTO
LARGE PARCELS #64