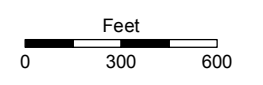


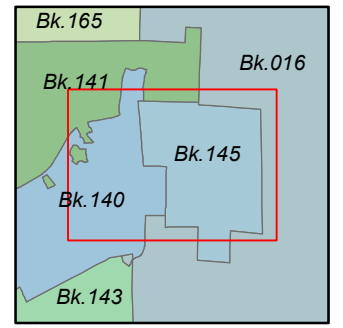
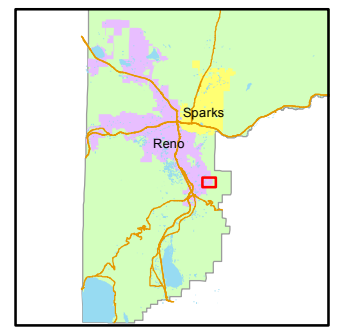
T18N - R20E

STATE OF NEVADA
WASHOE COUNTY
ASSESSOR'S OFFICE
Michael E. Clark, Assessor

1001 East Ninth Street
Building D
Reno, Nevada 89512
(775) 328-2231



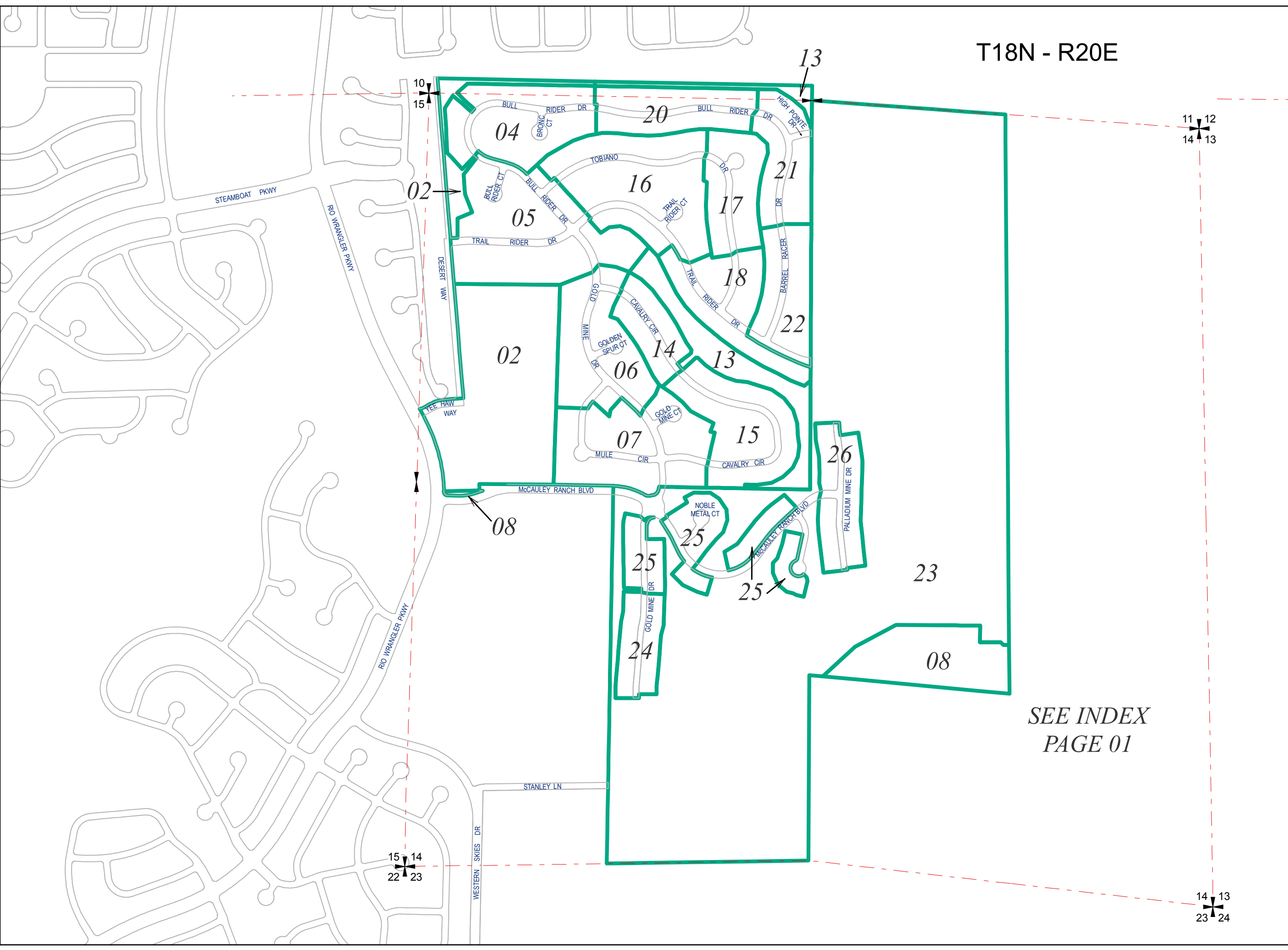
1 inch = 600 feet



created by: NLH 03/25/2011

last updated: EMG 10/31/16

NOTE: This map was prepared for the use of the Washoe County Assessor for assessment and illustrative purposes only. It does not represent a survey of the premises. No liability is assumed as to the sufficiency or accuracy of the data delineated hereon.



SEE INDEX
PAGE 01

10

15

13

11

12

14

13

15

14

22

23

14

13

23

24