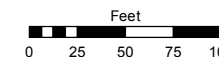


Assessor's Map Number

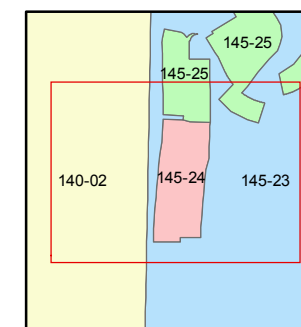
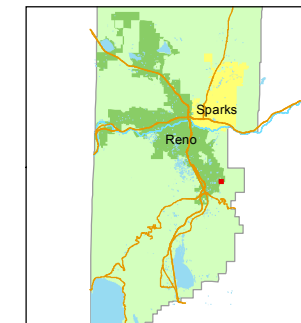
145-24

STATE OF NEVADA
WASHOE COUNTY
ASSESSOR'S OFFICE
Michael E. Clark, Assessor

1001 East Ninth Street
Building D
Reno, Nevada 89512
(775) 328-2231



1 inch = 100 feet



created by: EMG 10/26/2016

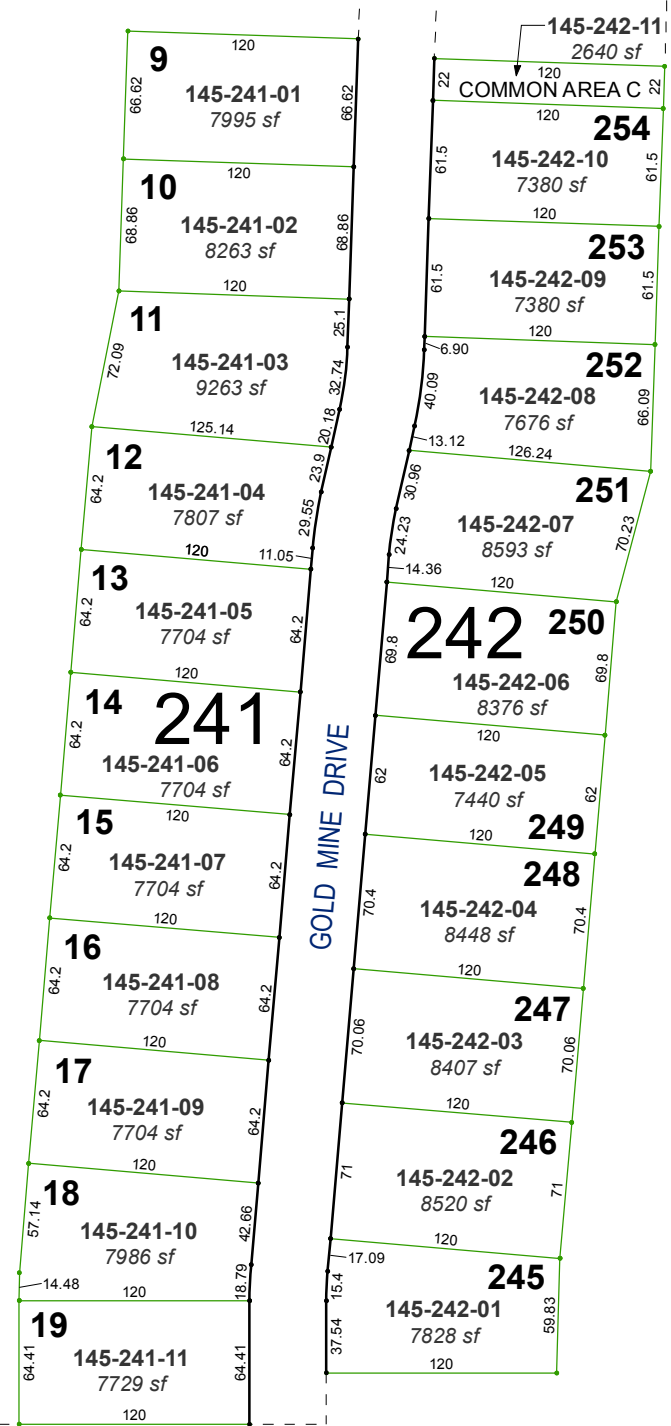
last updated: SR 3/2/17

area previously shown on map(s)

145-08

NOTE: This map was prepared for the use of the Washoe County Assessor for assessment and illustrative purposes only. It does not represent a survey of the premises. No liability is assumed as to the sufficiency or accuracy of the data delineated hereon.

McCAULEY RANCH BOULEVARD



(#5193)
AMENDED
PALISADES - PHASE 1
PORTION OF E½ & SW¼ SECTION 14
T18N - R20E