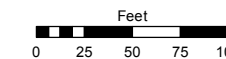
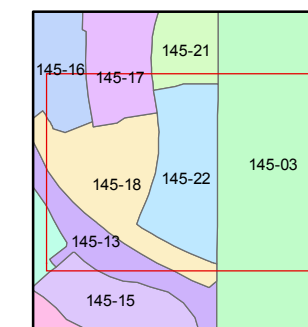
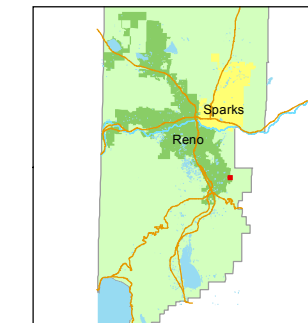


STATE OF NEVADA
WASHOE COUNTY
ASSESSOR'S OFFICE
Joshua G. Wilson, Assessor

1001 East Ninth Street
Building D
Reno, Nevada 89512
(775) 328-2231



1 inch = 100 feet



created by: KSB 11/10/2014

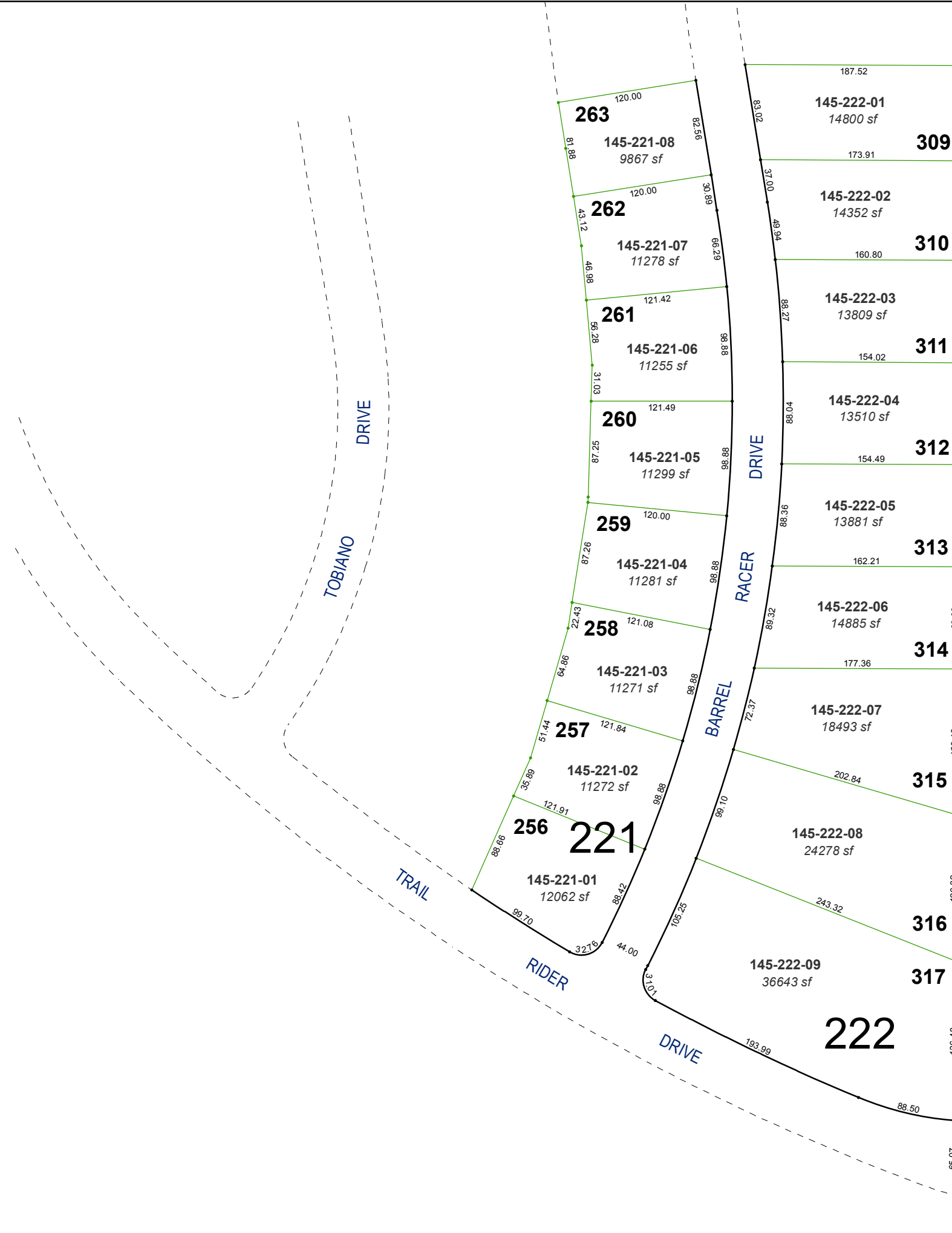
last updated: _____

area previously shown on map(s)

145-13

NOTE: This map was prepared for the use of the Washoe County Assessor for assessment and illustrative purposes only. It does not represent a survey of the premises. No liability is assumed as to the sufficiency or accuracy of the data delineated hereon.

(#5104)
GOLDEN HILLS PHASE 2C
PORTION OF NW ¼ SECTION 14
& SW ¼ SECTION 11
T18N - R20E



Parcel ID	Area (sf)	Area (ac)
145-221-08	9867	0.226
145-221-07	11278	0.258
145-221-06	11255	0.257
145-221-05	11299	0.259
145-221-04	11281	0.258
145-221-03	11271	0.258
145-221-02	11272	0.258
145-221-01	12062	0.276
145-222-01	14800	0.338
145-222-02	14352	0.328
145-222-03	13809	0.316
145-222-04	13510	0.310
145-222-05	13881	0.317
145-222-06	14885	0.340
145-222-07	18493	0.424
145-222-08	24278	0.557
145-222-09	36643	0.837